



**INNOVATE** international SCHOLARSHIPS STRATEGY PROJECT-BASED HARDEST FUN EVER ENGINEERING PRINCIPLES IMAGINATION EXPERIENTIAL LEARNING initiative COMMUNITY ENGAGEMENT

**K-12 FUN** TECHNOLOGY **MORE THAN ROBOTS** SM COACHES **STEM TEAMWORK** ASSIST

**MENTORS CHAMPIONSHIP** LEARNING SPORT **INNOVATION** PROGRAMMING ALLIANCES FUN REAL-WORLD ISSUES

**ROBOTICS SCIENCE** DESIGN COMPETITIONS **INTERNSHIPS** PROFESSIONAL ENGINEERS

**DESIGN** SCIENCE OK TO FAIL **INNOVATION** PROGRAMMING ALLIANCES FUN REAL-WORLD ISSUES

**MENTORS CHAMPIONSHIP** LEARNING SPORT **INNOVATION** PROGRAMMING ALLIANCES FUN REAL-WORLD ISSUES

**ROBOTICS SCIENCE** DESIGN COMPETITIONS **INTERNSHIPS** PROFESSIONAL ENGINEERS

**MENTORS CHAMPIONSHIP** LEARNING SPORT **INNOVATION** PROGRAMMING ALLIANCES FUN REAL-WORLD ISSUES

**ROBOTICS SCIENCE** DESIGN COMPETITIONS **INTERNSHIPS** PROFESSIONAL ENGINEERS



CORPORATE RESPONSIBILITY  
**RESEARCH**  
DEVELOPMENT

WORKFORCE TRAINING  
**FUTURE** SPORT

**CREATIVITY** CHALLENGE  
*Gracious Professionalism*<sup>®</sup>  
RESPECT DESIGN MATH  
**INSPIRATION**  
PROJECT-BASED LEARNING DISCOVERY

CREATIVE PROBLEM SOLVING  
*Coopertition*<sup>®</sup>

**MENTORS CHAMPIONSHIP**  
LEARNING SPORT  
**INNOVATION**  
PROGRAMMING ALLIANCES FUN REAL-WORLD ISSUES

GROWTH MINDSET  
*development*

ROBOTICS SCIENCE  
*21<sup>st</sup> century skills*

**HANDS ON**  
CRITICAL THINKING

*Sport for the Mind*<sup>™</sup>

CELEBRATION

**INTERNSHIPS**  
PROFESSIONAL ENGINEERS



*“When I gave this thing the name FIRST®, I said ‘It’s all about inspiration. If we don’t change what they’re inspired by, the world will.’ When I thought about that, it never occurred to me that one of the people who would end up being inspired is me. By all of you ... And I hope that you all inspire each other.”*

**FIRST Founder, Dean Kamen**



*We’ve always been*  
**MORE THAN ROBOTS<sup>SM</sup>**

Our founder, inventor Dean Kamen, has been saying it for over 25 years –

*“Our mission is about more than building robots;  
we are working to inspire and change a culture.”*

**FIRST®** (For Inspiration and Recognition of Science and Technology) — a 501(c)(3) not-for-profit public charity whose mission is to help develop our students into tomorrow’s science and technology leaders and innovators — uses young people’s interest in, and fascination with, robots as the “honey” to draw them into a progression of fun, engaging robotics and research programs. In the process, they learn the importance of team building and mutual respect, gain self-confidence, and develop crucial leadership and life skills, as well as master much-in-demand STEM (science, technology, engineering, and math) knowledge. They are transforming into tomorrow’s leaders.

Kids building robots is a clever disguise for a rapidly expanding community devoted to altering our culture into one where scientists and engineers are celebrated and revered on the same level as athletes and celebrities. Our unified goal is to open doors for all kids so that they may discover new interests and pathways, leading them to careers in science and engineering that they might never have considered.

We are extremely proud of the impact **FIRST** is making on this cultural change. Leaders in government, media, education, and even the entertainment world, are recognizing **FIRST** as a genuine game-changer in the lives of hundreds of thousands of students. They are eagerly embracing our programs because they have witnessed for themselves that the essence of **FIRST** is *More Than Robots<sup>SM</sup>*.

*Will you join us in making a difference?*

Learn the full **FIRST** story — our vision, reach, programs, and events — at [www.firstinspires.org](http://www.firstinspires.org)



*A decade of verifiable data shows that exposing kids to fun, exciting FIRST programs builds 21<sup>st</sup> century work skills and greatly increases their motivation to seek education and careers in STEM fields.*

**STEM EXPOSURE**      **STEM INTEREST & SKILLS**      **EDUCATION, STEM CAREERS**      **LONG-TERM OUTCOMES**

\*Unless noted, the data represented is the lowest value from the formal evaluations of the programs.

- 84%** work on the robot
- 90%** work on team strategy
- 88%** in FIRST® LEGO® League work on programming (63% in FIRST® Tech Challenge; 37% in FIRST® Robotics Competition)
- 84%** learn about STEM jobs
- 66%** make presentations to Judges
- 97%** have FUN!

- 88%** more interested in learning about science or technology
- 88%** better understand how STEM is used to solve real-world problems
- 98%** increase teamwork skills
- 93%** increase problem-solving skills

- 86%** more interested in doing well in school
- 84%** motivated to take challenging math or science classes (FIRST Robotics Competition, FIRST Tech Challenge)
- 94%** embrace the importance of Coopertition®, Gracious Professionalism®
- 80%** more interested in jobs that use STEM

**FIRST Alumni are:**

**College Majors:**  
**3x** as likely to major in engineering and  
**4x** as likely for women in FIRST to major in engineering\*

**Career Expectations:**  
 Nearly **4x** as likely to pursue a career in engineering\*

**Opportunities:**  
**10x** as likely to have an apprenticeship, internship, or co-op job in their freshman year of college\*

\*Than a matched comparison group

**ULTIMATE IMPACT**      **75%+** of FIRST Alumni are in a STEM field (student or professional)

*Inspired to learn more?*  
[www.firstinspires.org/about/impact](http://www.firstinspires.org/about/impact)

Sources: Brandeis University: Cross-Program Evaluation of FIRST Tech Challenge and FIRST Robotics Competition (2011); Evaluation of the 2012-13 FIRST LEGO League Program (2013); and More than Robots: Evaluation of FIRST Robotics Competition Participant and Institutional Impacts (2005); FIRST, 2015 Survey of FIRST Robotics Competition and FIRST Tech Challenge Alumni

## Founder's & Co-Chairs' Letter



**Dean Kamen**, *Founder*

**Sheri McCoy**, *Co-Chair, Board of Directors*

**Bob Tuttle**, *Co-Chair, Board of Directors*

To the uninitiated, *FIRST* may seem like kids just having fun with robots. To those of us devoting more than 25 years to this work, and to our millions of past and present participants, reality is quite the opposite. *FIRST* is so much *More Than Robots*<sup>SM</sup>.

Through the generosity of hundreds of thousands of Volunteers, Mentors, and Sponsors, *FIRST* offers young people the world over the opportunity to explore, learn, work as a cohesive team, take on and solve incredible challenges, and develop personal and professional skills that put them on paths to a successful adult life. Robots and research involving science, technology, engineering, and math (STEM) are what they do. Tomorrow's leaders are what they become.

Moving into our second quarter-century, we can proudly look back to see how far we have come since our humble, 28-team beginning in 1989. In 2015, we served more than 39,000 teams composed of approximately 360,000 kids, ages 6 through 18, in over 80 countries. Along their journey, incredible adults gave more than 13 million hours, last year alone, of their precious time to guide and support them, filling over 190,000 Volunteer roles. These astounding numbers continue to grow, in part because we can cite the concrete impact our Programs have on our students: more than 75 percent of *FIRST* Alumni are studying for or working in STEM careers, and female *FIRST* participants are four times more likely to study STEM subjects.\* We invite you to be inspired at [www.firstinspires.org/about/impact](http://www.firstinspires.org/about/impact).

If we are to continue our growth trajectory, reaching out to ever more students in need of inspiration, 21<sup>st</sup>-century work skills, and life-changing discovery — including those in underrepresented and underserved populations — we need your help. What can you do? Commit your organization's resources and people. Sponsor one or more teams. On a personal level, become a Mentor, raise funds, or volunteer in your community. Every contribution counts and every volunteer hour is cherished.

We cannot adequately thank our Strategic Partners, Founding Sponsors, Sponsors, Mentors, Volunteers, participating School and Program Administrators, Parents, and Teachers. These inspirational people and organizations selflessly offer their experience, knowledge, time, and resources in the most creative ways. We salute you!

Kids who dream big, who like to tinker, who need a boost in self-confidence, who yearn for an inclusive, non-judgmental environment to discover their own talents, who want a chance to make something of themselves, need all of us working together. We believe the opportunities offered by *FIRST* should be accessible to every student and belong in every school. Will you join with us to make that dream come true?

\*Sources: *FIRST*, 2011, Survey of *FIRST* Alumni; Brandeis University, *More than Robots: Evaluation of FIRST Robotics Competition Participant and Institutional Impacts* (2005)



**Donald E. Bossi, President**

## President's Letter

When I hear the phrase “*More Than Robots*,” I start thinking about all the ways that *FIRST* is “more.”

**More accessibility** Regardless of social or economic circumstances, we offer learning and discovery opportunities to youth everywhere, with a special emphasis to include girls and youth from diverse backgrounds.

**More connections** *FIRST* participants, young and old alike, build friendships, as well as social and professional networks, that enhance their lives now and provide life-changing influences and direction into the future.

**More growth** Despite our significant reach, our quest is to provide even more opportunities to become involved in *FIRST* as a student, Mentor, Sponsor, or Volunteer. Expanding access to our programs in every way possible is our top priority.

**More preparedness** Today's students need sophisticated education that includes more than just codified knowledge. They need 21<sup>st</sup> century workforce skills. We're proud to be a leader in developing collaborative creative competence in our young people, giving them a better chance for a productive and successful future.

*FIRST* touches more people in more ways than any other program I know — kids, who find a safe, fun place where they can develop and belong; students, whose lives are changed because they discovered new opportunities; Mentors, whose lives are enriched by working with engaged youth; grateful parents, whose children earn college scholarship support.

In 2015, we had many more milestones to celebrate, among them the formation of new Strategic Alliances with the American Society for Engineering Education, The Society of Hispanic Professional Engineers, and the National Center for Women & Information Technology. Our *FIRST* Scholarships program grew to over \$22 million in awards made available by nearly 200 Scholarship Providers in the U.S., Australia, Canada, and Mexico. We've launched an initiative that will further embed inclusion within the *FIRST* organization and community and improve the diversity of program participants.

In addition, we continue to learn more about the impact of our programs on participants. Findings from the second year of a longitudinal study conducted by Brandeis University\* show that *FIRST* has positive impacts on team members' interest, knowledge, and identity in STEM, as well as their interest in STEM careers. While both boys and girls benefit from participation in *FIRST*, the positive impact on STEM outcomes is even greater for girls. These results support our belief that *FIRST* is playing a critical role in inspiring the next generation of scientists and engineers.

I gratefully thank everyone who has given their time, talent, resources, and support to help us reach even more deserving kids than we ever thought possible. I challenge us all to recommit our efforts to reach out to the millions more who have yet to experience the *FIRST* opportunity.

\* Full report: [www.firstinspires.org/about/impact](http://www.firstinspires.org/about/impact)

# 2015 SEASON HIGHLIGHTS

## PROGRESSION OF PROGRAMS

A progression of four programs for ages 6 to 18; gets young people involved early, developing skills and building confidence, keeping them engaged through high school.



FIRST is honored to welcome three long-time supporters as new **Strategic Partners**: Bechtel Corporation, The Dow Chemical Company, and Qualcomm Incorporated. Thank you!

Outstanding FIRST students were recognized at the **White House Science Fair**: FIRST Robotics Competition Team 842 "Falcon Robotics" and Team 5594 "Team Crew"; Girl Scout troop FIRST LEGO League Jr. Team "Supergirls."



### FIRST ROBOTICS COMPETITION

Ages 14-18 (Grades 9-12)

Mentored by professional engineers, teams compete with 120-pound robots of their own design in this varsity *Sport for the Mind™*, combining the excitement of sport with the rigors of science and technology.

- Robotics
- Learn from the pros
- Game Play
- Scholarships

### FIRST TECH CHALLENGE

Ages 12-18 (Grades 7-12)

Students learn to think like engineers and develop an engineering notebook to document their progress. Teams develop strategies, build robots from a reusable kit of parts, and compete head to head.

- Robotics
- Engineering Notebook
- Game Play
- Scholarships

### FIRST LEGO LEAGUE

Ages 9-16\* (Grades 4-8)  
\*Ages vary by country

Guided by the program's Core Values, teams build LEGO®-based autonomous robots and develop research projects based on a real-world Challenge that changes annually.

- Robotics
- LEGO®
- Game Play
- Research

### FIRST LEGO LEAGUE JR.

Ages 6-9 (Grades K-3)

Teams explore today's scientific challenges, then present their research using a LEGO® model with motorized parts and a *Show Me* poster.

- LEGO®
- Simple Machines
- Research
- Presentations

A "first" for FIRST: FIRST Tech Challenge introduced a new, game-changing, **mobile technology platform** for their robot control.

The annual **FIRST LEGO League Global Innovation Award** presented by XPRIZE® celebrated its fifth anniversary; semi-finalists presented at the FIRST Championship.

2015 FIRST Championship, presented by Qualcomm, expanded to multiple St. Louis venues, drew 41,000+ attendees (over 900 teams), and hosted the inaugural **FIRST Innovation Faire**, featuring tech demos, hands-on activities, giveaways, and fun for all ages.



**SlingShot**, a Paul Lazarus documentary, profiles Dean Kamen's quest to bring clean water to the planet, and his devotion to introducing students to the life-altering career possibilities of science and technology through FIRST.

**Spare Parts**, a movie starring Jamie Lee Curtis, George Lopez, Carlos PenaVega, and Marisa Tomei, chronicles FIRST students' famous underdog robotic victory against college teams and features robots built by real FIRST teams.



## Yohance Salimu

At the 2015 Showcase Presentation during the *FIRST* Championship in St. Louis, Mentor Tim Wright introduced a young man from an impoverished Los Angeles neighborhood, who rose to overcome great odds as “a born leader.” *FIRST* Alum Yohance Salimu is so much more than a leader. He is an inspiration to all.

Currently a Cadet 1st Class at the U.S. Air Force Academy, Yohance had it tougher than so many other kids in South LA’s Crenshaw High School. “My father had a lots and lots of kids, and he had health issues and my mother had mental health issues, so my brother and I became homeless.”

That’s when Tim and teacher, Urban Reyes, invited Yohance to join their *FIRST* Robotics Competition team. “Tim even offered me a place to stay at night and food when I was hungry.”

Yohance excelled on the team, becoming Captain. Tim offered him an internship at Aerospace Corporation where he worked. Yohance embraced the opportunity, using his earnings to pull his family out of a homeless shelter and onto their feet.



“*FIRST* helped develop my leadership skills, and the experience helped me gain admission to the Air Force Academy. I am the man I am today thanks to Tim Wright, Urban Reyes, and *FIRST*. I one day hope to mentor kids from my community.”

Yohance Salimu

# 1989

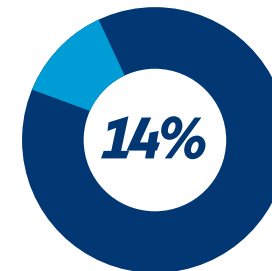
Year *FIRST* is founded to excite young people about science and technology

# 28

Number of teams competing in the inaugural 1992 *FIRST* season

## Sport for the Mind™

The answer to “What’s *FIRST*?”



Growth in number of *FIRST* teams over 2014



# 50 U.S. States / 80+ Countries

A growing global phenomenon

## Coopertition®

“Competing teams help and cooperate with each other” (a *FIRST* core value)

# \$22 million+

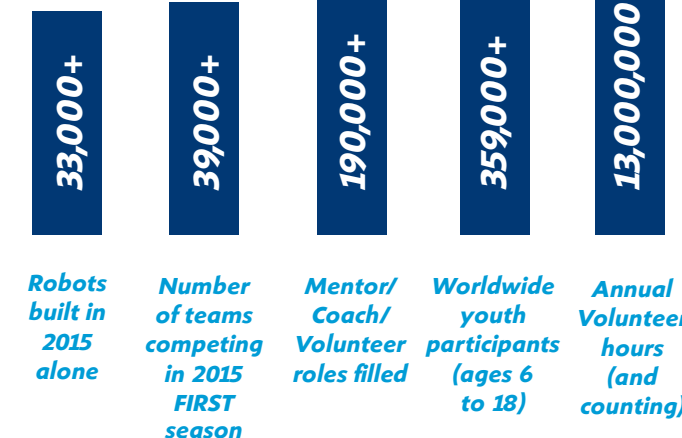
Scholarship funds available

## Gracious Professionalism®

“Respect for others, being a good sport, sharing what you’ve learned” (another *FIRST* core value)



Opportunities for a meaningful experience





## The Challenge

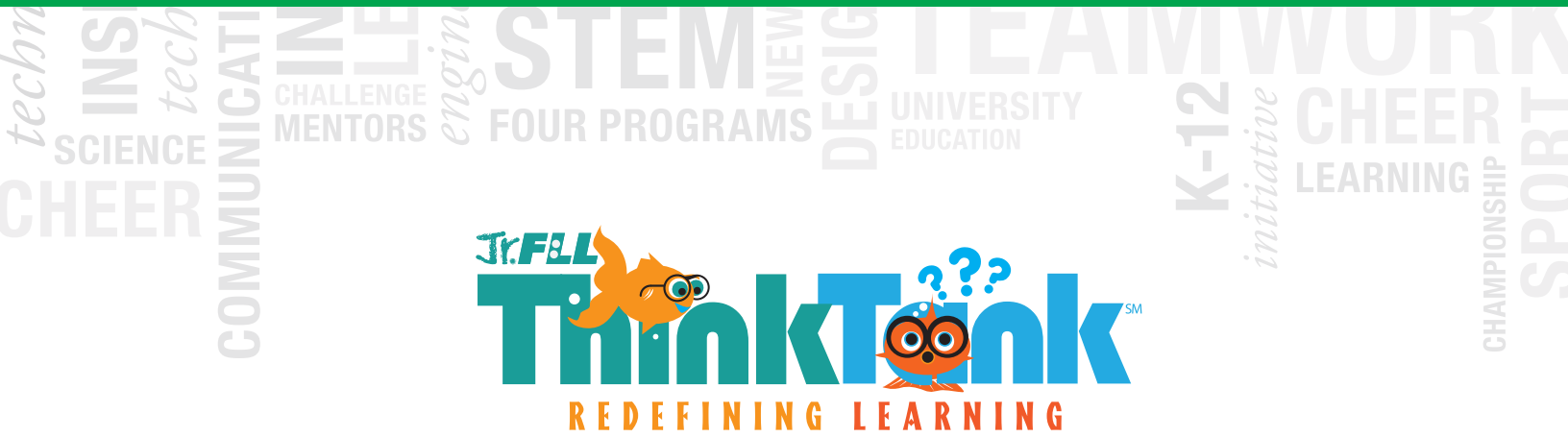
Students turned into detectives and researchers to gather information about how and where learning happens, then built LEGO® models and created *Show Me* posters depicting their journey of discovery

*“To see these young kids so interested in helping at this level was amazing.”*

**JULIE WEISS, Coach**  
“Determined Dolphins”



5,653



### Accomplishments

Approximately 34,000 6-9 year-olds participated on 5,653 teams in 23 countries, celebrating curiosity, imagination, discovery, and teamwork

### Competitions

Nearly 250 regional Expos; Junior FIRST LEGO League World Festival Expo in St. Louis

### Noteworthy

The Junior FIRST LEGO League World Festival Expo was extended to three days, and grew significantly to include 60 teams from five countries



### More Than Learning:

FIRST LEGO League Jr. Team 2814  
“Determined Dolphins”  
Castle Pines, Colorado

**Researched** the plight of dolphins caught and often injured in fishing nets, including Winter, a dolphin with a prosthetic tail, featured in the movie *Dolphin Tale*

**Developed** ideas for prostheses to help dolphins and other injured animals

**Contributed** their own money to help fund a year’s worth a special care for Winter at the Clearwater Marine Aquarium (FL)



Read the *Determined Dolphins’* full profile at

[www.firstinspires.org/determined-dolphins](http://www.firstinspires.org/determined-dolphins)

\*The Junior FIRST LEGO League (Jr.FLL) program was renamed FIRST LEGO League Jr. in November, 2015.





Grades 4-8 (ages 9 to 16)

## The Challenge

Teams researched and shared their innovative solutions to improve the learning experience, and used a team-designed autonomous robot, programmed with LEGO® MINDSTORMS®, to complete “missions” representing how we gather knowledge and skills

*“It’s truly rewarding when you finally see your team embrace everything you’ve taught them, then turn around and teach it to other students.”*

**CHRISTINE TORRE, Coach**  
“The Braille Boys & Annie”



### Accomplishments

Approximately 210,000 9-16 year-olds\* on 26,044 teams from over 80 countries participated in this season’s Challenge

\*Ages vary by country

### Competitions

1,124 Qualifying Tournaments,  
145 Championship Tournaments,  
4 Open Championships;  
FIRST LEGO League World Festival in St. Louis

### Noteworthy

The 2014-2015 FLL WORLD CLASS<sup>SM</sup> season marked the fifth anniversary of the FIRST LEGO League Global Innovation Award, presented by XPRIZE®, and introduced live judging for 20 semi-finalist teams at the FIRST Championship



### More Than Determined:

FIRST LEGO League Team 4678  
“The Braille Boys & Annie”

Cumming, Georgia



Read The Braille Boys & Annie’s full profile at

[www.firstinspires.org/braille-boys-and-annie](http://www.firstinspires.org/braille-boys-and-annie)



**Researched** the effectiveness of Braille tools through the National Federation of the Blind; discovered that 90 percent of blind children never learn Braille

**Invented** Insta-Braille®, a system that automatically “speaks” a letter, number, or word when a Braille symbol is touched, allowing a visually impaired person to learn Braille without the help of a sighted person

**Honored** as one of two runners-up in the FIRST LEGO League Global Innovation Award presented by XPRIZE®; used prize money to start a FIRST LEGO League team with visually impaired students



# FIRST TECH CHALLENGE

Grades 7-12 (ages 12 to 18)

## The Challenge

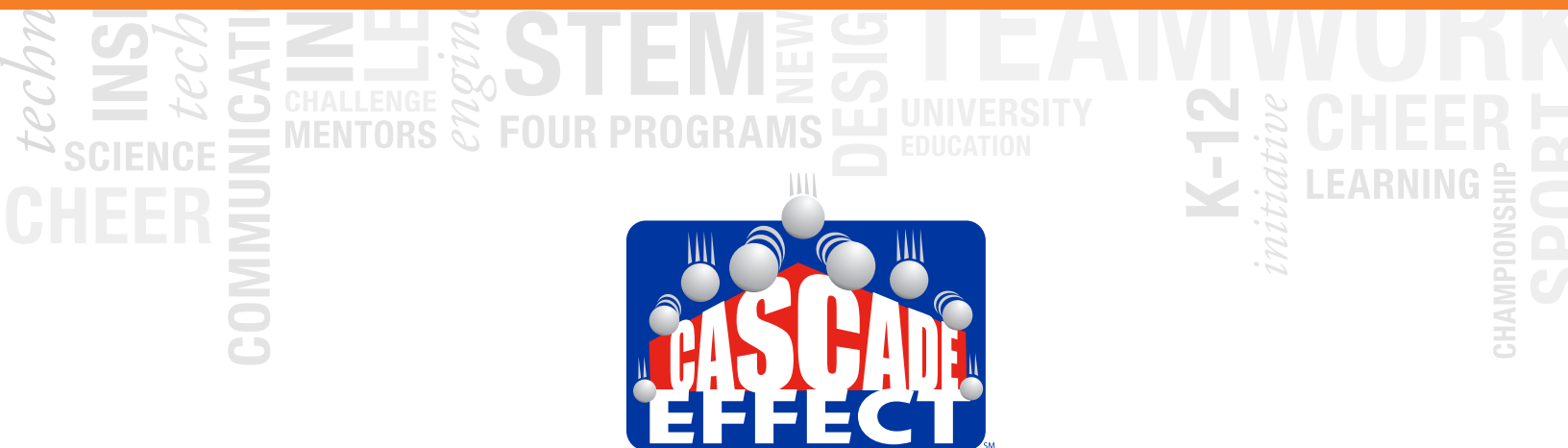
Teams designed, programmed, and operated robots to release a cascade of rolling, bouncing balls, score points dropping the balls into rolling tubes, and transport the tubes up a ramp to a scoring platform — all while racing against the clock!

*“When these FIRST kids from around the world work together to solve a problem, they are unstoppable.”*

**SHARON JOHNSON, Coach**  
“Schrödinger’s Hat”

**Team  
Growth**

4,445  
3,800



### Accomplishments

Approximately 45,000 participants (ages 12-18, grades 7-12) on 4,445 teams from 16 countries; eligible for over \$16 million in college scholarships

### Competitions

388 Meets, League Championships, and Qualifying Tournaments; 63 Championship Tournaments; 4 Super-Regional Championship Tournaments; FIRST Tech Challenge World Championship in St. Louis

### Noteworthy

FIRST Tech Challenge announced the new Android robotics platform to be used in the 2015-2016 season. Now teams will have the power of Qualcomm® Snapdragon™ technology and add “App Developer” to their skill sets

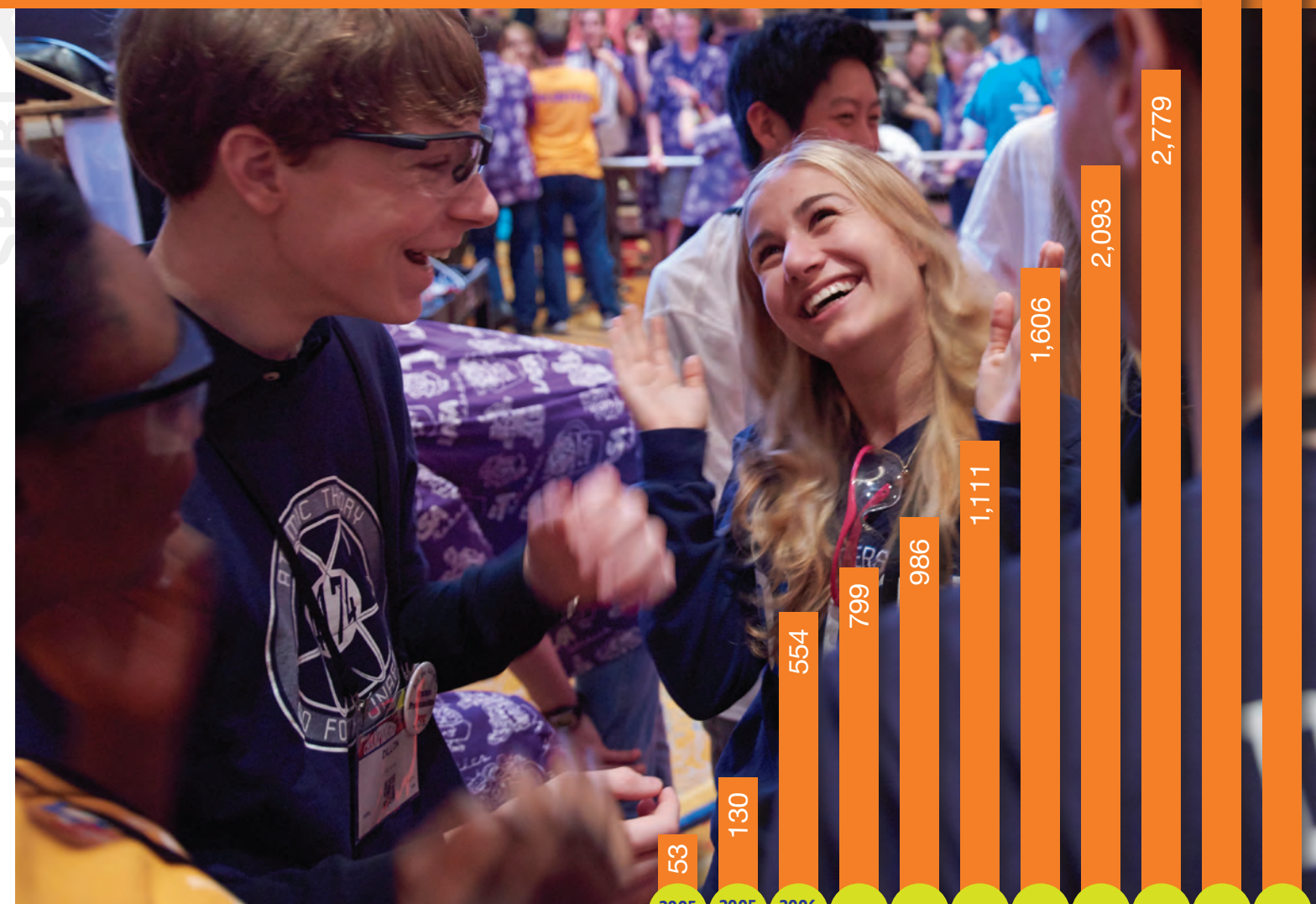


### More Than Local:

FIRST Tech Challenge Team 3595  
“Schrödinger’s Hat”  
Fairbanks, Alaska




Read Schrödinger’s Hat’s full profile at  
[www.firstinspires.org/schrodingers-hat](http://www.firstinspires.org/schrodingers-hat)



**Achieved** top honors at recent FIRST Championships, including Inspire Award (2015), Rockwell Collins Innovate Award and Promote Award (2014)

**Selected** by FIRST to help compile an in-depth wiring guide to assist other teams with the technical aspects of outfitting a robot, following an impressive conference presentation

**Earned** widespread recognition as FIRST ambassadors in Alaska and beyond; mentored elementary students; sponsored FIRST LEGO League events; fostered connections with many diverse teams at the Asia Pacific Invitational in Sydney, Australia; enthusiastically embraced the FIRST “culture of opportunity”



# FIRST ROBOTICS COMPETITION

Grades 9-12 (ages 14 to 18)

## The Challenge

Competing Alliances guided team-designed robots to stack Totes on Scoring Platforms, cap those stacks with Recycling Containers, and properly dispose of Litter (pool noodles). All game pieces were reusable or recyclable at the end of the season.

*“We call it SHAREing, which means Showing How Awesome a Robotics Education can be.”*

**DARRYL NEWHOUSE, Mentor**  
“The Wolverines”

**Team  
Growth**



## RECYCLE rush

### Accomplishments

Approximately 72,500 high-school students on 2,900 teams from 19 countries; eligible for over \$22 million in college scholarships

### Competitions

48 District Events; 5 State/ District Championships, 56 Regional Events; *FIRST* Robotics Competition Championship in St. Louis

### Noteworthy

Inaugural *FIRST* Robotics Competition Australia Regional Event held in Sydney; *FIRST* Robotics Competition Championship expanded from 400 to 600 teams, and from 4 to 8 sub-divisions

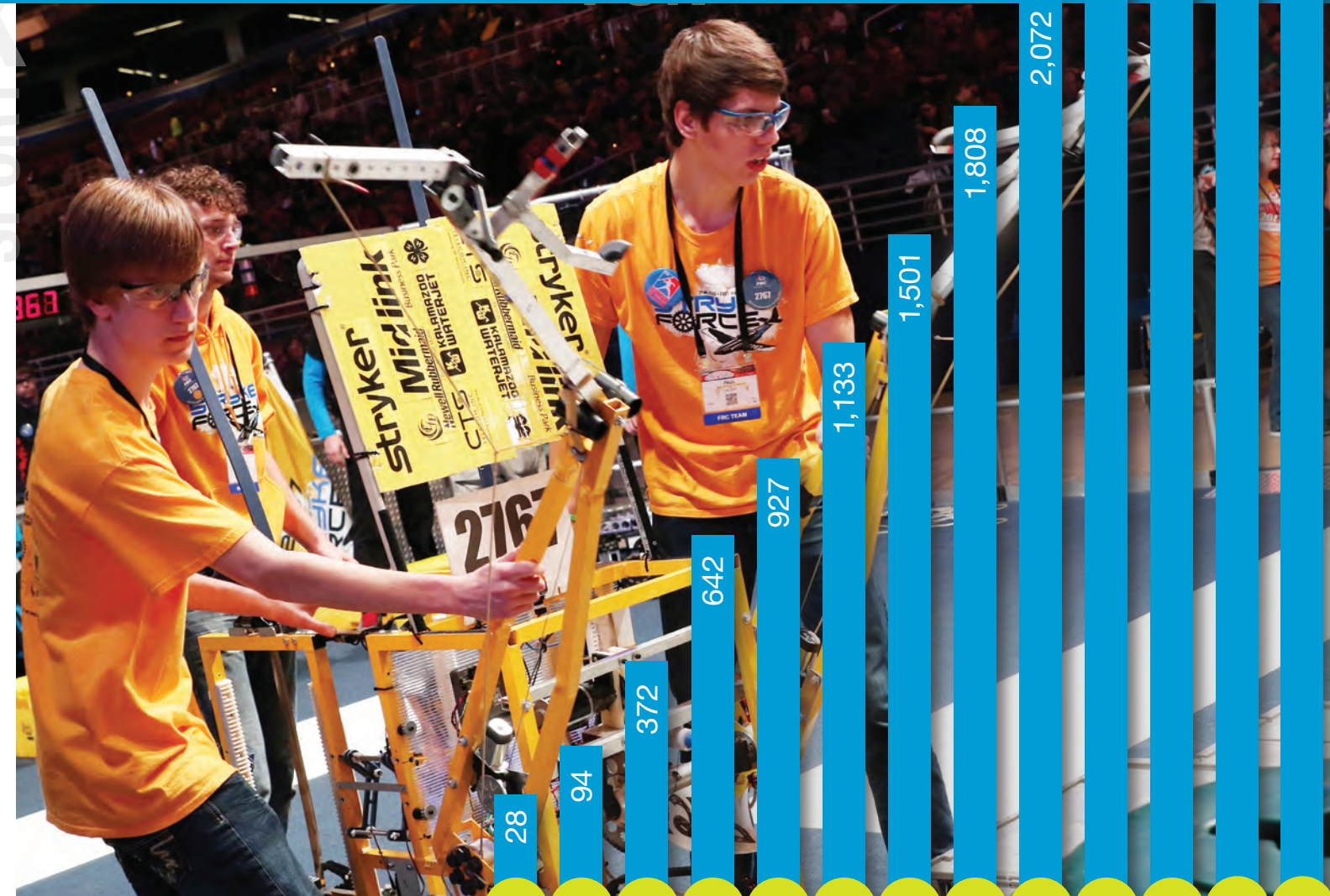


### More Than Self:

*FIRST* Robotics Competition Team 597  
“The Wolverines”  
South Los Angeles, California



Read the Wolverine's full profile at  
[www.firstinspires.org/wolverines](http://www.firstinspires.org/wolverines)



**Contributed** over 6,000 hours of community service (tutoring, volunteering, etc.) annually to help make a difference in their underserved community of South Los Angeles

**Established** a partnership with School in a Bottle to help advance technology and construct environmentally-friendly schools for children in Guatemala

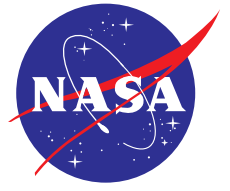
**Awarded** the prestigious Chairman's Award at the 2015 *FIRST* Championship for being leaders in transforming their community and spreading their passion for science and technology

Gracious Professionalism®  
 COMMUNICATIONS  
 RESPECT  
 FUTURE  
 CHALLENGE  
 DESIGN  
 mind  
 MATH  
 SCHOLARSHIPS  
 INFLUENCE  
 REAL-WORLD ISSUES  
 technology  
 TEAMWORK  
 assist  
 COACHES  
 development

**FIRST**  
 could not  
 achieve the impact  
 it does without  
 tremendous  
 support

*In addition to our Sponsors, Suppliers, and Contributors acknowledged on these pages, FIRST extends its sincere appreciation to the tens of thousands of Volunteers who generously devote their time and expertise to FIRST Robotics Competition, FIRST Tech Challenge, FIRST LEGO League, and FIRST LEGO League Jr. teams and events. FIRST could not achieve the impact it does without this tremendous support.*

**FIRST 2014-2015 Strategic Partners**



**FIRST Founding Sponsors**



- Member of the *FIRST* Board of Directors
- ▲ Member of the *FIRST* Executive Advisory Board
- *FIRST* Honorary Director
- \* *FIRST* Senior Advisor
- ◆ Matching Gift

**2014-2015 FIRST Contributors  
Corporations and Corporate  
Foundations**

**\$1,000,000+**

National Aeronautics and Space Administration (NASA)  
Qualcomm Incorporated  
United Technologies Corporation (UTC)

**\$250,000 - \$999,999**

3M Company  
Abbott Fund  
BAE Systems  
Baxter International, Inc.  
Bechtel Group Foundation  
Bloomberg L.P.  
The Boeing Company  
Booz Allen Hamilton, Inc.  
BOSCH Community Foundation  
Boston Scientific Corporation  
Caterpillar Foundation  
Caterpillar, Inc.  
Center for Energy Workforce Development (CEWD)  
The Coca-Cola Company  
Comcast NBCUniversal  
Consolidated Edison Company of New York, Inc.  
Corporation for National and Community Service (CNCS)  
The Dow Chemical Company  
Energizer Holdings, Inc.  
FedEx Corporation  
Ford Motor Company  
General Electric Company (GE)  
General Motors Company  
Goldman Sachs Group, Inc.  
Google.org  
The Leona M. and Harry B. Helmsley Charitable Trust  
John Deere  
Johnson & Johnson  
LEGO A/S  
Leidos, Inc.  
The Medtronic Foundation  
Monsanto Company  
Motorola Solutions Foundation  
National Defense Education Program (NDEP)  
NI  
Novelis  
NRG Energy, Inc.  
Pentair Foundation  
Pershing Square Foundation  
PTC, Inc.

Rackspace Hosting  
Rockwell Automation, Inc.  
Rockwell Collins, Inc.  
TE Connectivity  
Two Sigma Investments, LLC  
United Therapeutics Corporation  
U.S. Air Force

**Up to \$249,999**

100 Black Men of Atlanta Inc.  
1E Inc.  
3Dconnexion  
AAlderink Electric  
AAON, Inc.  
AB◆  
Abacus Business Solutions  
ABB Inc.  
Abbott Laboratories  
Accenture  
Advanced Technology Services, Inc.  
AdvanceTEC, LLC  
a.i. Solutions  
AKIMEKA  
Alabama 4-H Club Foundation  
Albany Tech Foundation, Inc.  
Albany Technical College  
Alcoa, Inc.  
Alexander & Associates  
Alliant Techsystems Inc. Employee Citizenship Fund◆  
Allied Automation  
AmazonSmile Foundation  
American Acrylic  
American Energy Partners  
American Red Cross  
American Society of Mechanical Engineers (ASME)  
Amgen Foundation, Inc.  
Amgen, Inc.  
Amoskeag Terrace in memory of Claire C. Toohy  
Analog Devices, Inc. (ADI)  
Anonymous  
Applied Materials, Inc.  
Archer Racing Accessories  
Ariel Investment Company  
Arizona Bank & Trust  
Arkansas Space Grant Consortium  
Arkansas State Fairgrounds  
Arrowhead Concrete Works, Inc.  
ASCE Southern Colorado Branch  
Association for Advancing Automation  
AT&T, Inc.  
AT&T United Way Employee Giving Campaign  
ATI Specialty Alloys and Components  
Atmos Energy  
Automatic Data Processing, Inc.◆  
Avnet

Baltimore Public Schools  
Bank of America Charitable Foundation, Inc.◆  
Barnet Associates LLC  
Barr Engineering  
Bausch & Lomb Incorporated  
BCHC Child Care  
Beckman Coulter Foundation  
Belden Inc.  
BELIMO Air Controls  
Best Buy Children's Foundation  
Best Buy Co., Inc.  
BEST Robotics  
BFK Foundation, Inc.  
Bilim Kahramanlari  
Bloomin' Brands, Inc.  
Blue Medora LLC  
Bob Crout Painting  
Boca Bearing Company  
The Boeing Company◆  
BOOC  
Boone County Education Foundation  
Booz Allen Hamilton, Inc.◆  
BOSCH  
Boston Consulting Group in honor of Jim Heppelmann▲  
Bottle Rocket LLC  
Boys & Girls Clubs of Greater Sacramento  
Boys & Girls Clubs of Tampa Bay  
BP Corporation North America, Inc.  
Bradley University  
Bridge Northeast FL  
Bright Funds Foundation  
Brighthouse Networks  
Butler Tool & Die, Inc.  
Bylites  
CACI, Inc.  
California Community Foundation/Disney Ears to You Grant per Concetta Maratta  
California Community Foundation/Disney Ears to You Grant per Brendan Radabaugh  
California Community Foundation/Disney Ears to You Grant per Daniel Richardson  
California Community Foundation/Disney Ears to You Grant per Micheal Sigmund  
California Community Foundation/Disney Ears to You Grant per Brian Walters  
California State University Dominguez Hills Foundation  
California University of Pennsylvania  
Canal Park Business Association (CPBA)  
Candor PR  
Cannon Air Force Base  
Capitol Technology University  
Carla Vista Sober Living LLC  
Carnegie Mellon University  
Caterpillar Global Mining, LLC  
Caterpillar, Inc. - Pittsburgh  
CenterPoint Energy

Central New York Community Foundations, Inc.  
CETYS Universidad Baja California  
C.H. Robinson Worldwide  
Cherokee Nation  
Chesapeake Energy Corporation  
Chesapeake Technology International  
The Chickasaw Nation  
CIGNA Foundation◆  
Circuit Assembly & Design  
Cirrus Aircraft  
Cisco Foundation◆  
Cisco Foundation in honor of Mark Clifton & Christopher M. Myers  
Cisco Systems, Inc.  
Citizens Equity First Credit Union (CEFCU)  
Cleveland County 4-H Foundations, Inc.  
Cleveland Indians  
Cochise Robotics Association  
Colegato Foundation  
Community Foundation for the Greater Capital Region  
Community Foundation of Greater Chattanooga, Inc.  
Community Foundation of Southwest Washington  
Community Foundation of West Chester/Liberty  
Community Health Charities of North Carolina  
Community Management Assistance Corporation  
Community Robotics Learning Foundation  
Community Service Council of Greater Tulsa  
Computer System Designers  
ConocoPhillips Company  
Cooper Memorial Library Association Inc.  
Corning Incorporated  
County of Monroe Industrial Development Agency  
Cox Communications  
CPS Energy  
Credit Suisse (USA), Inc.  
CSC Charitable Foundation  
cse software, inc.  
CUNY Hunter College  
CUSD (Chandler Unified School District)  
Custom Courier Solutions  
Custom House ULC Forex  
D&J Tech Service LLC  
Dana Holding Corporation  
DataNet Systems  
DC Public Schools  
Decatur Education Foundation  
Deep Space Systems Inc.  
Deer Creek Schools Foundation  
DEKA Foundation  
Dell Giving◆  
Dell, Inc.  
Delphi Automotive PLC  
Delphi Foundation



In 2015, as part of the *FIRST* Scholarship Program, nearly 200 Scholarship Providers made available over \$22 million in scholarship opportunities to *FIRST* Robotics Competition team members. *FIRST* Tech Challenge participants were eligible for \$16 million of these funds.

The majority of *FIRST* scholarships are made available by colleges or universities for enrollment at their campuses; the remainder is made available by corporations, associations, or foundations for use at a selection of schools. The 2015 *FIRST* Scholarships are listed on pages 33-34.

To learn more about the *FIRST* Scholarship Program, or to make *FIRST* Scholarships available from your institution, please visit:

[www.firstinspires.org/scholarships](http://www.firstinspires.org/scholarships)

Demand Electric, Inc.	ev3 Inc.	Genesis Attachments	The Help Group
Denso Manufacturing Tennessee, Inc.	Eversource Energy Foundation	Genesis Automation	Henderson Engineers, Inc.
Deuce Development Corporation	Everyone Givvs, Inc.	Georg Fischer Central Plastics, LLC	Henkel of America, Inc.
Devon Energy Corporation	Excel Fund	George Mason University	Henny Penny Corporation
Digi-Key Corporation	Exelon Dollars for Doers◆	Georgia Power Co. (A Southern Co.)	Henny Penny Foundation of the Dayton Foundation
Discovery Health Sciences Foundation	Express Employment Professionals	Girl Scouts of Eastern Missouri	Herman Miller Cares
Disney Worldwide Services, Inc.	ExxonMobil Corporation	Girl Scouts of Greater Atlanta	Highwater Ethanol, LLC
Dominion Nuclear Connecticut, Inc.	ExxonMobil Foundation◆	GitHub	Hilton
DonorsChoose.org	FEI Company	The Gleason Works	Hitachi Automotive Systems
Dot Foods, Inc.	Felta Multi-Media Inc.	Global Educational Excellence	Hitachi Data Systems
Dr. James A. Forrest Career & Technology Center	Fidelity Investments	Global Foundries	Holly Hill Self Storage
DT-New Orleans Airport	<i>FIRST</i> Robotics Competition Team 5269 "Sonic Sci-borgs"	Goldman Sachs Group, Inc.◆	Honda of America Mfg., Inc.
Duke Energy	First Solar Company	Golub Foundation (Pricechopper)	Honeywell Aerospace
Duluth Entertainment and Conference Center	First Tech Credit Union	Google.org Matching Gifts Program◆	Honeywell International Inc.
Dunlap Codding P.C.	Florida High Tech Corridor - UCF	GPA International Travel Services Inc.	IBM Corporation
Dura Automotive Systems	Florida High Tech Corridor - USF	The GRACO Foundation	IBM Corporation Employees ◆
E.J. Harrison & Sons	Florida Power & Light Company	Grand Canyon University	ICE Foundation
East Windsor Dental Arts	Florida Robotics Education, Inc.	Grandma's Adventure Zone	IDEAS Mfg. Inc.
Eastman Chemical Company	Fort Wayne Metals	Granite Bench Charitable Foundation	Ikonics
Eaton Computer Services	Foster, Murphy, Altman & Nickel in memory of Claire C. Toohy	Grant County 4-H Adult Leader's Association	Inasmuch Foundation
Eaton Corporation	Foundation for East Baton Rouge School System	Grant Thornton LLP	INSPR Media LLC
Eco Team Inc.	Franklin County 4-H Foundation	Greater Oklahoma City Chamber of Commerce	Institute for Academic Excellence
Ecolab Foundation	Freestyle	Greater Texas Foundation	Institute of Technology Foundation at Utica/Rome Inc.
Edgewater Resort & Waterpark	FTI Consulting, Inc.	Great-West Life & Annuity Insurance Company◆	Intel Foundation Volunteer Grant Program◆
Edward Jones Foundation	Fulcrum IT Services LLC	Greenspan Foundation	International Council on Systems Engineering (INCOSE)
EFC Systems	Fusion Jeunesse/Youth Fusion	Grundy Family YMCA	Irving Convention & Visitors Bureau
Electronic Arts, Inc.	Future Seekers Inc.	Haas Automation	Isthmus Engineering & Manufacturing Co-op
Elemental Technologies	General Dynamics	Hall Estill	ISU/Mills County Extension and Outreach
Embedded Planet	General Dynamics Advanced Information Systems	Hallmark University	Itasca Community College
Emerson Charitable Trust	General Electric Company (GE)	Hamilton AV	Itron Community Investment
Employees Charity Organization (ECHO) of Northrop Grumman - Rodney Qualls	General Electric Energy (Atlanta)	Hampton Dental Group, P.C.	Ivy Tech Foundation
Energeneics, Inc.	General Electric Healthcare	Hanover Architectural Products	Jacobs Technology, Inc.
enktesis, LLC	General Electric Oil & Gas	Harding Center for Distance Education in Bible and Ministry	The Jamar Company
Environmental Tectonics Corporation	General Electric Power & Water	Harding University	James Madison University College of Education
Envision Excellence in STEM Education Inc.	General Electric Power Systems	Harris Corporation	JCPenney
EOT 4-H Federation	General Electric Transportation	Harris Corporation, RF Communications Division	Jefferson Parish Convention and Visitors Bureau
ESL	General Mills Foundation	Harrison County 4-H Leaders Association	Jewish Federation of Greater Metrowest NJ
Essentia Health		Hartel's/DBJ Disposal	
E*TRADE Financial Matching Gifts Program◆			

John Bean Technologies Corporation  
 John Deere ♦  
 John Steele Zink Foundation  
 Johnson & Johnson Ortho-Clinical Diagnostics  
 Joint Economic Development Board of Unicoi County, Inc.  
 Joy Global Inc.  
 The JPMorgan Chase Foundation ♦  
 Kaua'i Economic Development Board  
 The Kenific Group Inc.  
 Kentucky Engineering Foundation  
 Kerr Foundation, Inc.  
 Kettering University  
 Kiamichi Technology Center  
 Kings View Behavioral Health Systems  
 Kirkpatrick Foundation, Inc.  
 Kitware Inc.  
 Kraus-Anderson Construction Co.  
 Ladish Co. Foundation  
 Lake Superior College  
 Lakeshore Arts Alliance, Inc.  
 Lam Research Foundation Fund at the East Bay Community Foundation  
 Lamar  
 Lear Corporation  
 The LEGO Foundation  
 LEM USA Inc.  
 Liberty Robotics Foundation  
 Lima Family YMCA  
 Limoneira  
 Lincoln Laboratory  
 LinkedIn  
 Linn Energy, LLC  
 Little Rock Convention and Visitors Bureau  
 LMCO Undersea Systems  
 Lockheed Martin Corporation  
 Lockheed Martin Kelly Aviation Center  
 Lockheed Martin Maritime Systems & Sensors  
 Lubbock Boys & Girls Club  
 M+W US, Inc.  
 Macquarie University  
 MadeRightHere  
 Madison County Community Foundation Incorporated  
 MAGNET the Manufacturing Advocacy & Growth Network  
 The Manitowoc Company Foundation  
 Marathon Petroleum  
 Martin Engineering  
 Martin Library Association  
 Maryland Space Business Roundtable  
 The MathWorks, Inc.  
 Mattlin Foundation  
 Mattson Technology, Inc.  
 Maxim Integrated  
 MeadWestvaco Foundation ♦  
 Medtronic, Inc. ♦  
 Meggitt Polymers and Composites

Mentor Graphics Foundation  
 Meritor  
 Metavante Corporation  
 Michael Best & Friedrich LLP  
 Microchip Employees United Way  
 Microchip Technology, Inc.  
 Micron  
 Microsoft Corporation  
 Microsoft Corporation Matching Gifts Program ♦  
 Microsoft Corporation Silicon Valley  
 Friends of Middletown Robotics  
 Mile High United Way  
 Miller Family Philanthropy  
 Miner's/Super One  
 Minnesota Interactive Marketing Association  
 Minnesota Power Foundation  
 MN State High School League  
 Monsantotogether ♦  
 Montana State University  
 Montclair Fund for Educational Excellence, Inc.  
 Moore Fans LLC  
 Morgan Stanley Foundation ♦  
 Motiva  
 Motorola Mobility Foundation  
 Mount Dora Library Association, Inc.  
 Mouser Electronics, Inc.  
 MPECU - Minnesota Power Employees Credit Union  
 MRI Global  
 MSP Communications  
 MTEQ - Manufacturing Techniques, Inc.  
 MV Consulting, Inc.  
 MVATC  
 Nacel Open Door, Inc.  
 NASA Armstrong Flight Research Center  
 NASA Johnson Space Center  
 The National Center Simulation  
 National Defense Education Program (NDEP)  
 National Grid  
 National Society of Black Engineers (NSBE)  
 Navistar  
 NetScout Systems Inc. Charitable Giving Program  
 New Brunswick Education Foundation Inc.  
 Newfane Circuit Stompers, Inc.  
 News Corp  
 Nexteer Automotive  
 NH Space Grant Consortium/NASA EPSCoR  
 Nidec Motor Corporation  
 Nora Teipen Performing Arts Studios, LLC  
 Nordson Corp.  
 North Atlantic Industries  
 North Carolina State University  
 Northern Door & Hardware, Inc.  
 Northland Foundation  
 Northrop Grumman Corporation  
 Northwest Maritime Center

Norwolf Tool Works, Inc.  
 Novak Technical Services  
 Nuclear Energy Institute  
 Nucor  
 NVIDIA Corporation  
 NYCharities.org  
 Nypro Inc.  
 Ocean Acres Veterinary Office  
 Offit Capital Advisors LLC  
 OGE Energy Corporation Foundation, Inc.  
 Ohio County Community Foundation  
 The Ohio Educational Outreach Foundation  
 Ohio Space Grant Consortium  
 OK Business Roundtable  
 Oklahoma Aeronautics Commission  
 Oklahoma Center for the Advancement of Science & Technology  
 Oklahoma Christian University  
 Oklahoma City Convention and Visitors Bureau  
 Oklahoma State University  
 Oklahoma State University, College of Engineering  
 ON Semiconductor  
 OneFire Media Group, Inc.  
 Oracle Foundation  
 Orbital Sciences Corporation  
 Osceola County 4-H Foundation  
 Oshkosh Corporation  
 Outerwall  
 P&G Engineering Modeling and Simulation  
 P&G Foundation  
 Pace Analytical Services, Inc.  
 Page County Agricultural Extension Educational Fund  
 Parker Hannifin Corporation  
 Parker Hannifin Foundation  
 The Ralph M. Parsons Foundation  
 Partners for Community Inc.  
 Patriarch Partners/I Am Jane  
 Patriots Technology Training Center  
 PDF Solutions, Inc.  
 St. Louis Community College Foundation  
 St. Louis Convention & Visitors Commission  
 St. Louis Regional Chamber  
 St. Louis Science Center  
 St. Luke's  
 St. Onge Foundation  
 Salem-Keizer Education Foundation  
 The Salvation Army - KROC  
 Samuel Field YM & YWHA, Inc.  
 San Diego State University  
 SASTEMIC  
 Saturn Systems Inc.  
 Schaeffler Group USA Inc.  
 Schneider Electric ♦  
 School Outfitters  
 Schuylerville Robotics, Inc.  
 Science Foundation Arizona  
 Scotttrade, Inc.

Progea USA, LLC  
 Progress Software  
 Public Service Enterprise Group  
 Purdue University  
 PwC Charitable Foundation, Inc.  
 The Quaker Chemical Foundation  
 Qualcomm Incorporated Matching Gift Program ♦  
 Quality Sheet Metal & Welding Inc.  
 Radio Systems Corporation  
 RAS Communications  
 Raytheon Company  
 Raytheon Space and Airborne Systems  
 RCAL Products, Inc.  
 RCO Enterprises  
 Reed Technology and Information Services Inc.  
 Regeneron Pharmaceuticals, Inc. ♦  
 REM "Catch the Dream"  
 Republic Bank  
 The Research Corporation of the University of Hawaii  
 The Research Foundation for State University of New York  
 Resolution Copper Mining  
 State of Rhode Island  
 Ricardo, Inc.  
 Riverside Tool & Die Co.  
 Robotics Education & Competition Foundation  
 Rochester Institute of Technology  
 Rocketfuel  
 The Roddenberry Foundation  
 Rolls-Royce North America  
 Rosetta Resources Inc.  
 Royal Plaza, Inc.  
 RTE Technologies, Inc.  
 Rubio Premier Motors  
 S.A. Greenwood Mgmt Resources LLC  
 SAIC  
 St. Jude Medical Foundation  
 St. Louis Community College  
 St. Louis Community College Foundation  
 St. Louis Convention & Visitors Commission  
 St. Louis Regional Chamber  
 St. Louis Science Center  
 St. Luke's  
 St. Onge Foundation  
 Salem-Keizer Education Foundation  
 The Salvation Army - KROC  
 Samuel Field YM & YWHA, Inc.  
 San Diego State University  
 SASTEMIC  
 Saturn Systems Inc.  
 Schaeffler Group USA Inc.  
 Schneider Electric ♦  
 School Outfitters  
 Schuylerville Robotics, Inc.  
 Science Foundation Arizona  
 Scotttrade, Inc.

Screen Semiconductor Solutions  
 Servery  
 Shell Oil Company Foundation Matching Gifts ♦  
 Siemens Corporation  
 Sil-Pro, LLC  
 Skillpoint Alliance  
 Skills USA  
 SMC Corporation of America  
 Smithfield Foods ♦  
 Society of Hispanic Professional Engineers (SHPE) Professional Chapter of Cincinnati  
 Society of Women Engineers (SWE) Sacramento Valley Section  
 Solidyn Solutions  
 Sonny's Enterprises  
 Sony Corporation  
 South Florida Science Center & Aquarium, Inc.  
 Southwest Airlines Co.  
 SpaceX  
 Sparton Electronics  
 Spirit of St. Louis Air Show  
 Springfield Urban League  
 SRA International Corporation  
 SRA International Corporation on behalf of 2014 Service Star Recipients  
 SRCtec, Inc.  
 State Street Foundation  
 Stay in Duluth  
 Steuben County Literacy Coalition  
 Stinger Ghaffarian Technologies  
 Stratasys  
 SubltUp Inc.  
 SW District Extension of Oklahoma  
 The Sylvan Laureate Foundation  
 Syracuse Academy of Science Charter  
 T. Rowe Price Associates, Inc.  
 T. Rowe Price Foundation  
 Tampa Bay Robotics Foundation, Inc.  
 Target  
 Taylor County 4-H Leaders Association  
 TDK - Lambda Americas  
 TE Connectivity Employment Engagement Fund ♦  
 Teaching Matters, Inc.  
 Teaching Textbooks Inc.  
 Tennant Company  
 Tennessee Valley Authority (TVA)  
 Teradata Cares  
 Teradata Corporation ♦  
 Tesoro Corporation  
 Texas Tech University  
 Thorlabs, Inc.  
 Thrivent Financial for Lutherans Foundation ♦  
 Thunderbolt Hobby & Art  
 Tiffany and Company ♦  
 Time Warner Cable

Tomkins Gates Foundation  
 Total Facility Solutions, Inc.  
 Toyota  
 Toyota Motor Engineering & Manufacturing North America Inc.  
 Toyota USA Foundation  
 TR Electronic  
 Transamerica  
 Trenton Public Education Foundation  
 TrialNetworks in honor of Eric Silberstein  
 Tripwire Fund of the Oregon Community Foundation  
 TRUIST  
 TTI Inc.  
 TV Azteca SA B De CV  
 UL  
 Ultra Motion  
 United Airlines Foundation  
 United Health Foundation  
 United HealthCare Services, Inc.  
 United Launch Alliance (ULA)  
 United Way - PCFO  
 Universal McCann  
 University of California, Davis  
 University of Central Florida  
 University of Cincinnati  
 University of Illinois  
 University of Minnesota College of Science & Engineering  
 University of Minnesota Twin Cities  
 University of North Carolina, Chapel Hill  
 University of Oklahoma  
 University of Southern Indiana  
 University of Tulsa College of Engineering and Natural Sciences  
 University of Virginia  
 University of Wisconsin Platteville  
 UPS Foundation  
 U.S. Army ROTC  
 U.S. Navy  
 Utah State University  
 UT-Battelle/Oak Ridge National Laboratory  
 Utica Tradewinds Education Center  
 UVAS Foundation  
 Velcro Industries  
 The Venture Center  
 Verizon Foundation  
 ViaSat, Inc.  
 Virginia Polytechnic Institute and State University (Virginia Tech)  
 Virginia Tech Foundation, Inc.  
 Visit Duluth  
 Vulcan Spring and Mfg Co.  
 Wacky Buttons  
 Waco Historical Society  
 Walt Disney Company  
 Walt Disney Imagineering  
 Ward Petroleum Corporation  
 Booker T. Washington Foundation for Excellence

## FIRST Vice Chair John E. Abele Receives the FIRST Founder's Award



Technological visionary and philanthropist, John E. Abele, is the recipient of the 2015 Founder's Award for exceptional service in advancing the ideals and mission of *FIRST*.

A member of the *FIRST* Board of Directors since 1997 and current Vice Chair, Abele provides a fresh perspective and insightful counsel to help *FIRST* grow and become a recognizable cultural fixture. His contributions, both personally and through his enterprises — the *Argosy* Foundation, *FIRST* Founding Sponsor Boston Scientific Corporation, and the Kingbridge Centre — tie in with his dedication to science literacy for children, education, and the process by which new technology is invented, developed, and introduced to society.

Abele believes that participation in *FIRST* is an opportunity, a privilege, and a responsibility. The team grants and Fundraising Kit he has enabled help level the playing field so teams can participate that might not have been able to otherwise, while helping teams foster independence and self-sufficiency. His support spans the *FIRST* Progression of Programs, and beyond, with the funding of scholarships.

Abele relentlessly focuses on preserving *FIRST* values and promoting the concept that *FIRST* is about much *More Than Robots*<sup>SM</sup>. "It's not just STEM. It's not just *Gracious Professionalism*<sup>SM</sup>. It's the integration of all of that," says Abele.

Waste Management  
Way Program  
Wells Fargo & Company  
Wells Fargo Advisors  
Westhampton Architectural Glass, Inc.  
Whataburger  
Whelen Engineering Company  
The Williams Companies, Inc.  
The Williams Foundation  
Wishes in Stitches Embroidery  
WMS Gaming Chicago  
Robert Hunt, Michael Pomianek and all the Shareholders at Wolf, Greenfield & Sacks, P.C. in memory of Claire C. Toohey  
Wolfe Architecture & Design  
Women for a Better Louisiana  
Wonik IPS USA  
Woolpert  
Worcester Polytechnic Institute  
W.W. Grainger, Inc.  
Xavier University  
Xcel Energy  
Xerox Corporation  
Xerox Foundation  
Xilinx  
XPRIZE®  
Xyleme, Inc.  
Y-12  
YMCA of Broward County  
YMCA of Michiana  
Young Presidents' Organization, Chicago Chapter  
Young Women's Leadership Network  
YouYou Japanese Bistro  
Zephyr Engineering Inc.  
Zonta Club of Santa Clarita Valley Foundation

**Individual and Family Foundation Donors**

**\$1,000,000+**

Argosy Foundation

**\$25,000+**

Anonymous  
Bezos Family Foundation  
Brin Wojcicki Foundation  
Lawrence & Tami Cohen  
William Danforth  
Ann & John ● Doerr  
Walter Havenstein ■  
The Heinz Endowments  
Newman's Own Foundation, Inc.  
Myron Ullman ■  
Philip Venables  
Paul Walker  
Josh▲ & Judy Weston

**\$5,000 - \$24,999**

Craig and Barbara Barrett Foundation  
Family and Friends of James B. Bassich  
Donald Bossi ■  
Don Bulens  
Ursula Burns ■  
The Curtis L. Carlson Family Foundation  
Jane P. Chwick  
James Dimon  
Donald J. Duet  
Thomas & Susan Dunn  
Victor & Patricia Ganzi  
John Gerbeth  
Frank Grossman  
Karen & Rick Hargrove  
The Bruce J. Heim Foundation  
Marc Hodosh ▲  
Dr. Paul Jacobs ■  
The Keough Family Foundation  
Sheri McCoy ■  
Thomas & Paula McLnerney  
Scott McKay ■  
The Milk Money Foundation, Inc.  
Mosher Family Foundation  
Dennis Muilenburg ■  
Dr. William Murphy Jr. \*  
The Kenneth T. and Eileen L. Norris Foundation  
The Gerald Oppenheimer Family Foundation  
Robert ■ & Elizabeth Parkinson  
Stephen & Jill Petty  
Anita Pinkham  
Aaron Raphel  
Sanghi Family Foundation  
Gary Schermerhorn  
Marie & Matthew Schiller  
Thomas J. Sommer in honor of Dean Kamen  
Gary ● and Diane Tooker Family Foundation  
Trio Foundation of St. Louis  
Robert ■ & Lynn Tuttle  
James Utaski ●  
Gregory & Anneliese Wyler  
Ronald Zarrella

**Up to \$4,999**

Daniel Abeln  
Amber Aceti  
Joshua Adelson  
Mina Adsit  
Susan Agrawal  
Ben Agron  
Ben Agron in memory of Jesse Laufer  
Peggy Agron in memory of Jesse Laufer  
Kevin Ainsworth  
Mario Albuja  
Joseph Allegro  
Toomas Allik  
Dorothy Altbaum in memory of Jesse Laufer

Stephen Amorosi  
Claudia Anderson  
R. Dale Anderson in honor of Kristin & Scott Anderson  
Dennis Anderson  
Donald Anderson  
Jeffrey Anderson  
Scott Andes  
Anonymous Donors  
Anonymous in honor of Sarah Edwards  
Anonymous in honor of Nicholas Gentile  
Anonymous in honor of Tim Haughian  
Anonymous in honor of Jackson Kerber  
Anonymous in memory of Jesse Laufer  
Anonymous in honor of Sarah Anna Le  
Anonymous in honor of the Martin Family  
Anonymous in honor of Marian Passmore, Team 233  
Anonymous in memory of Claire C. Toohey  
Marilyn Arko in memory of Frank A. Brand, Sr.  
Ronald Aroesty in memory of Claire C. Toohey  
Simon Arthur  
Simon Arthur in honor of Big Blue Saw Customers  
Justin Ashtiani  
Gary Asuncion  
Greg Auclair  
Crystal Aurand  
Scott Austin  
Jennifer Axelsen  
Michele Azar  
Babson Mustard Family  
Graeme Baer  
Becky Bailey  
Tom Bain  
Emily Rose Bainton  
Russell Ball  
Basavaraj Banakar  
Bancroft-Clair Foundation  
Jacob Bandes-Storch  
Kelly Banks  
Ashleigh Barber  
Tom Barn  
Jim and Dede Bartlett Foundation  
Victor Bauer  
Scott Baxter  
Lynn Bayard in memory of Jesse Laufer  
James Beabout  
William Beach Jr.  
William and Diana Beaulieu  
Jeffery Becraft  
Edwin & Dorothy Beland  
Vladimir Belinkis  
Francis Belizario  
Daniel Beller in honor of Marilyn Sobel  
Jason Benn  
Tom Bent

Matthew Berg  
Susan Berkowitz  
Marilyn Bernstein in memory of Jesse Laufer  
Stuart & Marcella Bernstein  
Stuart & Marcella Bernstein in honor of Oleg Kosubevsky  
Steven Berry Jr.  
Brian Bertrand  
Todd Bethel  
Alfred Bie  
Theodore Bills  
Suzanne Bird  
Chad Bishop  
Brenda Bledsoe  
Roy Bobo Jr.  
E.A. Boesiger  
Dennis & Denise Bone  
Emily Bone  
Stanley & Ann Borowiec  
Steven Bose  
Bovin Family Foundation  
Peter Bower  
Stephen Bozak  
Brent Braden  
Jeffrey Braun  
Dr. Stevie and Rene Bravmann in memory of John Hofer  
R.J. Briceno  
Daniel Singer Bricklin  
John Brigham  
Rebecca Brodie in honor of John Brodie  
Steve Brodie  
Christopher & Barbara Brody  
Richard Bronstein in memory of Jesse Laufer  
David & Lori Brooks  
Allyson Brown in honor of Gail VanEkeren  
James Brown  
Douglas Bruce in honor of Carolyn S. Bruce  
Joanne Brustad in memory of Frank A. Brand  
Nathaniel Buck  
William Buckley  
Phil Budashewitz in memory of Claire C. Toohey  
Robert Bulmer  
Terrell Burch  
Cindy Burns  
Kyle Burns  
Elizabeth Bush  
Matthew Buss  
Carmen Butt  
Lee-Ann Cabero  
D.G. Callan  
Kathleen Callow  
Holly Capobianco  
William Carboneau  
Dave Card  
John Card  
Carolyn Carhuff  
Tom Carlone

# 2015 Woodie Flowers Award Winner Puts Students FIRST

FIRST Robotics Competition Mentor, Mark Lawrence, is the recipient of the 2015 Woodie Flowers Award, founded by Dr. William P. Murphy Jr. to recognize an outstanding engineer or teacher who best demonstrates excellence in teaching science, math, and creative design.

Lawrence joined FIRST in 2005 as a founding Mentor of Team 1816 “The Green Machine” of Edina, Minnesota, and is known for always putting students first. He tirelessly devotes his time to mentoring students, reads their emails before those of adult Mentors or Volunteers, and has helped countless young people — not only on Team 1816 — pursue their passions and plan their career paths.



Not content until all students across Minnesota have access to FIRST, Lawrence founded the Minnesota Regional Planning Committee, fueling exponential growth and ensuring over 56 percent of Minnesota high-school students now have the opportunity to participate in the FIRST Robotics Competition. He led the charge to make the program a state-sanctioned varsity sport, with the same recognition as football and hockey, and works with other states to follow suit.

Lawrence pushes students and Mentors to achieve excellence and raises his expectations once they are met. The students call Lawrence “our most fervent and enthusiastic cheerleader. We can’t wait to see where he takes us in the future.”

David Carr	James Cook	Doug Desrochers	Peter Dunn
James Carr	Harold Cooper	Emily-Anne Deutsch	Nagarajan Duraisamy
Alvin Colon Carroll	Jeffrey Cooper	Dale DeYoung	James Durand
Michele Casari in memory of Aaron Casari	The Leon and Toby Cooperman Family Foundation	Nidhi Dhupati	Terry & Patti Durkin
Angela Ceglio	William Counts	Sriya Dhupati	Terry & Patti Durkin in memory of Claire C. Toohey
Gram Cgre	Philippe Couvignou in honor of Team 3647	Richard Di Bona in memory of Dr. Frank A. Brand	Terry & Patti Durkin in memory of Scott R. Frock
Ron Chaney	Wendy Covey	Martha Dickey	Adnan Durrani
Kenneth Chang	Connie Crawford▲	Stephen Diebold in honor of Robert Diebold Jr.	William Edds
Scott Chase	Reyner Crosby	H.A. Diep	Teri Ehrenhardt
Ji Chen	Alan Cunningham	John DiGiovanna	Mitzi and Warren Eisenberg Family Foundation
Andrew Christie	Roger Curtis	Jason Dillon	Mark Enzien
Gary Christelis	Lawrence Daddario	Deborah Dixon	Ronald Erb
Emily Christensen in memory of Jesse Laufer	Rich Daly	Jeffrey Dobrinsky	Robert Evans
Lesli Christie	Michael Damiani in memory of Susan Ryan	Michael Dodd	Jeffrey Evelhoch
Li Chunlin	Samuel Dangremond	Ryan Dognaux	Carolyn Fagan
Mickey L. Clagg	Susann Daniels	Timothy Donnelly	Randall Fahey
Dave Clark	Julie Schramm Dartt	Emma Dorgan	Vickie Falzarano
Jane Cleary in memory of Claire Toohey	Rebecca Davenport	Irwin & Janet Dorros	Vickie Fedewa
Robert Clesi	Jason Davidson	Edward Dougherty	Norman Feit
Kellie Cloud	Kenneth & Lisa Davis	Kolbo Douglas	Brandon Feldman in memory of Jesse Laufer
Rebecca Cohen	Michael Davis	James Downey	Ferland Family Foundation, Inc.
Angella Coil	Matt Dawson	Dennis Drayer	Robert Ferring
Jared Coke	Ron Deblinger	The Drexler Family Foundation	Kenneth Fitchhorn
Vincent & Lorraine Colarusso	Anne Marie DeBoard	James Dubin in memory of Jesse Laufer	Erin Fleck
Vincent Emery Colarusso	Tanuja Dehne in memory of Philip Crane	Joel Dubs	Bernard Flynn
Lori College in honor of Griffin College	Frank DeLorenzo	Jay Duchin	Greg Fodor
Tale Walbridge Collins	Paul DeMaida	Patrick & Janis Dunlap	
Cristi Colony	Lauren Demski		

Charlotte Fore  
Laura Fox in honor of Laura & Michael's Wedding  
Margaret Frankian  
Graham Freedman  
Dorothy Freer  
David Freifelder  
Ed Fried  
Phil Friedman  
Stephen and Fredrica Friedman  
J.E. Gabb  
Jamie Gage  
David Gagliano  
Michelle Gagnon in honor of Dean Kamen  
Michelle Gagnon in honor of *FIRST* Employees  
Cara Galli  
Radha Ganapathy  
Debbie Garbers  
Thomas Garrett  
Bill & Melinda Gates Foundation  
Anne & Wendell Gauthier Family Foundation  
David Gedymin  
M.F. Geil  
Geisler Family Trust  
Paul Gessler in honor of Sarah Darwin  
Joel Gilbert  
Angie Gillette in honor of Hal Gillette  
Ben Gilliland  
Camille Chang Gilmore in memory of Dorothy Fischer  
Paul & Theresa Giordanella  
Mark Giordono  
Jane Gitomer in memory of Jesse Laufer  
Thomas Glenn  
Jack Goble  
Scott Godin  
Richard Gold Jr. in honor of Lily Gold  
Alfred Goldstein  
Jeffrey & Doris Goldstein  
Mr. & Mrs. Shari Goodrich in memory of Jesse Laufer  
Jerry & Paula Gottesman  
Daniel Goveas  
E. Graham  
Mark Grant  
J.H. Green  
Peter Green  
Veryl Greene  
Mark Greenlaw in memory of Shirley Greenlaw  
Vana Gregg  
Mr. & Mrs. John Gregor  
Glenn Gribble  
Eileen Griffee  
Grace Griffin  
Michael Grindl  
Loretta Grob  
Christopher Grontkowski

Larry and Jan Gros  
Gregory Gross in honor of Terry Durkin  
Steven & Jonith Grundmann  
Lori Gruppuso  
R.J. Haag  
Brett Haaga  
Josh Haldeman & Caroline Alikonis  
Paul Hanau  
Mindy Hangsleben in memory of T.J. (Thomas) Wirta  
Geri Hansen  
Thomas Hansen  
David Hardy  
Sheryl Harmon in memory of Jesse Laufer  
Richard & Carol Harries  
Dustin Harrington  
Hartfiel Angel Foundation  
James & Jennifer Hausch  
Barbara Hayes  
Richard Hayes  
Laura Hayman  
Stephen & Lynn Hazard  
Matthew Heath  
Trever Houston Hefner  
Juan Herrera  
R.L. Herron  
Scott Heuler  
Marilyn & James Hewson  
Jaimee Mae Hickey  
Steven Higgins  
Tuan Hoang  
Colin Holgate  
Janet Honek in memory of T.J. (Thomas) Wirta  
Shane Hooker  
Joseph Houle  
Marc Howard  
Robert Howard  
Mark Howland  
Cynthia Howlett-Willis  
Elizabeth Huddle in honor of Martina List  
Mark Huey  
Christopher Hughes  
Kent Hughes ▲  
Heidi Hullinger  
Patti Hunter in memory of Jesse Laufer  
Mary Pat Hussey in memory of Jesse Laufer  
Ronald Iannucci  
Robert Iles in honor of Daniel Whittle  
Georgia Ioannou  
D.J. Iyob  
James Jacobs II  
Mary Jacobsen  
Sharon Jadrnak  
Jeffrey Jaeckel  
Joel Janke  
Bill Jansen  
Stephen Jelinek & Betsy Wisch

Ellen Jewett in memory of Jesse Laufer  
Carrie Johnson in honor of Jim Rothrock  
Judy Johnson  
Kurt Johnson in honor of Jim Rothrock  
Michael Johnson & Elizabeth Barnes  
Timothy Johnson  
Zolu Jose  
M.A. Judy  
Beverly Jurenko  
Leslie Bender Jutzi  
Suzie Kabeiseman  
Jana Kaelin  
Eileen Kaler  
Pamela Kan  
Shaun Kane  
Menachem Kaplan in memory of Jesse Laufer  
Collette Kaster  
Daniel Kasun  
L. Robert & Kathleen Kaswell  
Richard Katz in memory of Jesse Laufer  
Earle Kazis  
Charles Kennedy  
Muhtar Kent ■  
Alexander Kernbaum  
Judith A. Kersey  
Ben Kershaw  
Janette Kinnally  
Wayne Kinsey  
B. Kitchenka  
Jill Klausner in memory of Jesse Laufer  
Gerry Klinglesmith  
Kathleen & George Klinich  
Holly Koblish  
Timothy Koch  
Michael Kohler  
Steven Korsch  
Bernard and Carol Kossar Foundation Inc.  
Ronda Kozlowski  
Sharon Krawiec  
Matthew Krever  
Jerrold Krivitzky  
The Kunkel Family Foundation  
Randall Lam  
Robert Lamaute  
Jimmy Lambrinos  
William & Beth Landman  
Michael Lang  
Kendra & Joseph Langevin  
George Lanigan in memory of Claire C. Toohey  
Richard Lanigan in memory of Claire C. Toohey  
Janet Larsen  
Ann Laure  
Mike Lautzenheiser  
Paul▲ & Kelley Lazarus  
Kim Le Quach

Kim Le Quach in honor of Sarah Anne Le (Quach)  
Alison Leach in memory of John "Mike" Hofer  
Jason Lee  
Margaret Lehman in memory of Zachary Lehman, Mentor, *FIRST* Robotics Competition Team 1510 "Wildcats"  
Bambi Lerner  
Raymond LeVesque  
Sean Lewis  
LHB Foundation Fund  
Ashley Liles  
Pean Lim  
T.C. Lim  
Linda Lin in honor of Benjamin Miller  
Samantha Lipscomb  
John Lipsky in memory of Jesse Laufer  
Thornton Lockwood  
Luci Locsin  
Guy Lohman  
Devin Lombard  
Michelle Long & Isaac Mishkit  
Dr. Felix Lopez  
Matthew Lorentzen  
Vernon Loucks Jr.  
Mannie Lowe  
Andrew Jackson Lowery  
Janice Luchner  
Bruce Ludwig in memory of Jesse Laufer  
Paul Ludwig  
Scott Ludwig  
Ronald Lushing in memory of Jesse Laufer  
Nicholas Luther  
Dorothy & Gerald Lynch in memory of Dr. Frank A. Brand  
John Lynch ■  
Russell & Tina Lyon  
Cheryl Maayan  
Frodo Magaiver  
Vicki Magasinn in memory of Jesse Laufer  
Jeanne Maguire  
Richard Maher  
Cristina Mahon  
John Mahoney & Jeanne Cain in memory of Dr. Frank A. Brand  
Carla Malden and Normal Beil in memory of Jesse Laufer  
The Marcus Foundation, Inc.  
Jeffrey Marell in memory of Jesse Laufer  
John Marino  
Jason Markesino  
Gregory Marra  
Michael Marshall  
S.H. Marshall  
Todd Martin  
Michael Martinez  
Gregory Marton & Debbie Seidell  
Elliott & Cathy Masie

F.L. Massino  
Diane Mastrorocco  
Cristian Mata  
Annick Matherne  
Susie Mathieu▲  
Ashwin Mathur  
James Matthew  
Nancy Matthews in honor of John, Lynn and Annika  
Jason Matznick  
Donald May Jr. in honor of Carson Buol  
Jeff May in honor of the ECIA Organization & Debbie Conyers  
Paul Mayfield  
Bart & Cheryl Mayforth  
Kathleen McCarthy in memory of Reggie Cook  
Robert McCarthy  
Susan McCarthy  
William McClung  
Amy McCoskey  
Jonathan McCoy  
Veronica McDonnell  
Debra McDuffie  
Anne McGrath  
Ryan McKeefrey  
Gillian McPhee  
Arruando Mebezerra  
Kevin Meier  
Gerald Mele  
Miriam Melnick  
John Merry  
Melissa Messenger in memory of Charles Paul Messenger  
Microsoft Corporation Employees  
Makeda Mikael  
Jim Mikel  
George Milks  
Mr. & Mrs. Miller  
Dan & Kimberly Miller in honor of Scott & Kristin Anderson  
Linda Miller in honor of Mari & Dan Dawley  
Robin Miller in memory of Jesse Laufer  
Scott Miller  
William Miller  
Maureen Mingey  
John Mitt  
Joseph Mollica  
Ed Molyneux  
Charles Monson in honor of the Holly Berg & Kory McDonald Wedding  
Joanne Monty  
Alex Moon  
Richard More  
Jack Morgan  
Therese Moriarty in memory of Sefi Bloch  
P.E. Morin  
Harry Morrison  
Seth Mosier in honor of Mike Mosier  
Christina Mowers

Peter Mueller  
Brian Muirhead  
Katherine Mulligan  
Timothy Mushkin  
Tanya Nagatani in honor of Howard H. Nagatani  
Cynthia Neal-Harris  
John Nesi  
Cecilia Neumann▲  
Benjamin Ng  
Hop Dinh Nguyen in honor of Nam and Eugenia  
Dr. John & Patricia Nguyen  
Minh Nguyen  
Phuong Nguyen  
Van Nguyen  
W. Nguyen  
Christopher Nichols  
Karen Nichols  
William Nicholson III  
Steven Niemitalo  
L. Nimori  
Martin & Marian Nishi  
R.E. Nitschke  
Jasper Norris  
William Nottingham  
Bill Nussey  
Maxwell Nuyens  
Marne Obernauer  
Gene O'Brien  
Maureen O'Connell  
Edward O'Dwyer III  
Ms. Sarah O'Hagan  
Mr. & Mrs. Angel Olmeta in memory of Jesse Laufer  
Christopher Olson  
Lisa Kimi Omori  
Teresa On in memory of Jesse Laufer  
Catherine Ono  
Hilary Oran in memory of Jesse Laufer  
Robert K. Ortberg ■  
Anne Orwerth in memory of the Bridges Family, Stephen Bridges  
Ryan Packham  
Cynthia Paden  
Gregory K. Palm in honor of Oleg Kosubevsky  
W.L. Palmer  
Robert Palmquist in memory of Jesse Laufer  
Robert Parker  
Robert Parker in honor of the Bushaws  
Kimberley Paul  
Kathryn (Katie) Paultre in honor of the Anritsu Company  
Kathryn (Katie) Paultre in honor of Bria Media  
Kathryn (Katie) Paultre in honor of BWW Communications  
Kathryn (Katie) Paultre in honor of Hufmann Media Sales

Kathryn (Katie) Paultre in honor of John Day  
Kathryn (Katie) Paultre in honor of Linear Technology Corporation  
Kathryn (Katie) Paultre in honor of Power Integrations  
Kathryn (Katie) Paultre in honor of Power Systems Design  
Marc Pawliger  
Maggie Pax in honor of Ben Donahue - Battery Powered Pickle Jar Heads team  
Maribeth Payton in honor of Holly Berg-McDonald  
Glen Pearson  
Jon Pence  
Arnold S. Penner Foundation Inc.  
R. Pereira  
Pete Pereira  
Guilherme Peretti  
Philip Perivolaris  
Jordan Perr-Sauer  
John Peters  
Kyle Petersen  
Jacqueline Petit  
My Thanh Pham  
Sont Pham  
Tammy Pham  
David Phillips  
Traci Ann Vinopal Phillips  
Stephen Philpott  
Robert Philpott Jr.  
Joseph & Andrea Piacentine  
Ashley Pierce  
Kevin Pieters  
Lorrie Piper  
Elizabeth Plott  
Richard Pogue  
Michele Polk  
William Pollock  
Matthew Pope  
Alex Poula  
Eric Prager  
Jennifer Prentice  
Rob & Stacy Pressman  
Thomas Propst  
Kimberley Prygocki-Jeakins  
Cyril Puthoff  
Rodney Qualls  
Jason Quesenberry  
Eileen & Leslie Quick  
Job Rabinowitz  
Valerie Radwaner in memory of Jesse Laufer  
Kim Raymoure  
Thaddeus Reardon  
Patricia Rector  
Justin Reese  
David Regen  
Steven & Gail Reinemund  
Christophe Renaud  
David Rich

Jamie Rich  
Robert James Richardson  
Ariel Rideout  
Elizabeth Riley  
Leslie Ringling in honor of Mark Gurgol  
Hiram Joel Rios  
Cristina Roark  
Stephen & Pilar Robert  
Patricia Meeks Roberts  
Gerard Roche  
G.R. Rodgers  
Jonathan Rodin  
Hector Rodriguez-Aviles in memory of Mr. Sergio Hector Rodriguez Romo  
Dennis Rogers in honor of Frank Brand  
Nicholas Romano  
M.D. Romero  
Michael Romero  
Rosenbluth Family Foundation  
Rosenthal Family Foundation in memory of Jesse Laufer  
Mark Rosin  
Steven Ross  
Jillian Leigh Rothwell  
L.R. Rourke  
Jennifer Roy  
Paul Royte in memory of Dr. Frank A. Brand  
Jonathan Rucker in honor of Reid Rucker  
Edward Patrick Rush  
M.W. Rushing  
Michael Rusignuolo  
Russell Charitable Fund  
Edward Rust  
The Ryan Family Foundation  
Mark Sanfilippo  
Lizabeth Sarakin  
Dilip Sathe  
Marjorie Sauer  
Terrence Sauer  
Lois Sayrs  
Kristine Scarpone  
Lisa Schaab  
David Schafer in memory of Jesse Laufer  
R.L. Schaffer  
Mark Schemel  
Paul Schilling  
Eric Schimmel  
James Schnur  
J.R. Schnur  
John Schreiber  
Gordon Scott  
Nancy Seiler in memory of Frank A. Brand  
Elizabeth Seufert  
Neal Shapiro  
Catherine Shapp  
Behrooz Shariati in memory of Claire C. Toohey  
Peter Sharples  
Eric & Mary Sherk



# Young Inventors

## The FIRST LEGO League Global Innovation Award presented by XPRIZE® Celebrated 5 Years

This award is designed to encourage and assist FIRST LEGO League teams to further develop their innovative solutions to real-world problems. For the first time this year, 20 Semi-Finalist teams presented their solutions to judges in person during the FIRST Championship in St. Louis. All teams were then inducted as Global Innovation Ambassadors, promising to continue their journey of innovation, share with their communities, and keep their spark of innovation lit.



The winner and two runners up were honored at a ceremony at the United States Patent and Trademark office in June, 2015.

**First Place winners for the FIRST LEGO League WORLD CLASS™ season “Team Storm” of Terre Haute, Indiana**

### Invention:

The ROY G. BIV Math System is an app designed to improve the way children challenged with dyslexia learn new math concepts. This system keeps digits in place when math is performed, allowing students to easily spot flipped digits out of a rainbow color order.

## The FIRST Future Innovator Award sponsored by the Abbott Fund

The FIRST Future Innovator Award launched this year with a new timeframe, allowing participation by more FIRST Tech Challenge and FIRST Robotics Competition teams in their off seasons. Through the invention of a unique solution, this award honors creativity and problem-solving. New this year is having teams apply their inventing skills to one of three chosen National Academy of Engineering’s Grand Challenges — access to clean water, advancing health informatics, or engineering the tools of scientific discovery.



Mary Shetterly  
Brett Shurman in memory of Jesse Laufer  
Joan Sides  
F.S. Siegel  
Jeffrey Siegel  
Steve Siirila  
Paul Silberberg  
A.C. Sill  
Jason Silver in memory of Jesse Laufer  
Michael & Avis Silver  
Paul Silverman  
Randall & Cynthia Simatic  
Kaplan Simons Family Foundation  
Christopher Smith  
Mark Snow  
Andrea Sobel in memory of Jesse Laufer  
Marilyn Sobel in memory of Jesse Laufer  
Robert▲ & Kathleen Sobolewski  
Julie Soldo  
Miriam Somero  
Lora Sondrol  
Eileen M. Span  
Allan Sperling in memory of Jesse Laufer  
Jason Sproul  
Stephen & Tina Squeri  
Todd Stablein  
Lisa Statchen  
Milton Steiner  
Roseann & Mark Stevens  
Linda & Ken Stewart  
Marion & Johnston Stewart in memory of Graeme Stuart  
Peter & Elizabeth Stillmank  
Dia Stolnitz  
Chelsea Stone  
Chelsea Stone in honor of Thunder Robotics  
James Stone  
Linda Stone  
Andrew Stoneback  
Dean Storgaard  
Mr. Eric Strachan  
Kate Straus  
Martha Stubbs  
Karen Sue  
W.D. Sullivan  
Deborah Sweeney  
Joshua Sweetkind  
Debbie & David Swenson  
Peter Swenson  
Aidan Synnott in memory of Jesse Laufer  
Joseph and Arlene Taub Foundation  
Diana Taylor in honor of North Carolina School of Science & Math  
Richard Teel  
Kristiane Teeple  
Linda Tenda  
J.A. Thalhamer  
Roxanne Todor

Patricia Tolbert  
John Towery  
Bang Tran  
Karen Treff  
Nicholas Trent  
Melissa Trepanier  
Sandy Trissell  
Dana Tupy  
Mucahit Turel  
William & Judith Turner  
Robert■ & Lynn Tuttle in memory of Claire C. Toohey  
Paul & Judy Ulland  
Vijay Umapathy  
Wesley Urbanik  
Sameer Vachani  
Donna Van Ness  
Joe Varnell  
Ms. Angela Ventresco  
Angela Volk  
Maria Vullo in memory of Jesse Laufer  
Andrew Wagner  
Dr. Zev Waldman  
Ellen Walker in memory of Paul Walker Schaffel  
Mark Walker in memory of Jim Bollensen  
Cheryl Walsh  
Nancy Walsh in memory of Andrew Nicholson  
Frank Walter III & Marguerite Walter  
Karen Warack in honor of the Leadership Team  
Bruce Warner in memory of Jesse Laufer  
T.S. Warner  
James Watkins  
Mark Watts  
Barry & Stephenie Weakley  
Elaine Webb  
Joseph Weber  
Beverly Weeks  
Vicki Weinsetin in memory of Jesse Laufer  
Shawn Weisfeld  
The Weiss Foundation  
John Whitaker  
Gamunu Wijetunge  
Timothy Wilczynski  
Vincent Wilczynski▲  
Henry (Hank) Wilde  
Willett Family Foundation  
Chris Willett  
Michelle Williams  
Vicky Williams  
Sandi Willsey in honor of my son Colin R. Lemen, FIRST Scholarship recipient  
Jeffrey Wilson in honor of Brandy Menzel  
Jeffrey Wilson in honor of Lori J. Wilson  
Jerry Wilson  
Lee Wilson

Andrea Winegar  
Andrew Witman  
Chad Wittrock  
Michael Woinsky in honor of Alan Woinsky  
Pamela Wong  
Christie Ann Woodman  
Joshua Wright  
Timothy Wright  
David Wrobel  
John Wrobel in memory of Frank Brand, Sr.  
B.P. Wu  
Trond Wuellner  
Craig Yanks  
Lester Yee  
Joanne Zhang  
Xi Zhang  
Elizabeth Zimmer  
Ryan Zimmer

## 2015 FIRST CHAMPIONSHIP SPONSORS

Presenting Sponsor



### Program Sponsors

Energizer Holdings, Inc.  
FedEx Corporation  
Center for Energy Workforce Development (CEWD)  
Google.org  
Monsanto Company  
NRG Energy, Inc.  
United Technologies Corporation (UTC)  
U.S. Air Force

### FIRST Shipping Sponsor

FedEx Corporation

### Sponsors

Abbott Fund  
Bechtel Group Foundation  
Belden Inc.  
The Boeing Company  
Booz Allen Hamilton, Inc.  
BOSCH  
The Coca-Cola Company  
Comcast NBCUniversal  
Dr. William H. Danforth  
The Dow Chemical Company  
Edward Jones Foundation  
International Council on Systems Engineering (INCOSE)  
Microsoft Corporation  
Mouser Electronics, Inc.  
Nidec Motor Corporation  
NVIDIA Corporation  
Patriarch Partners/I Am Jane  
St. Louis Regional Chamber  
Scotttrade, Inc.  
Southwest Airlines  
SpaceX  
Trio Foundation of St. Louis  
UL  
Vulcan Spring and Mfg Co.  
Wells Fargo Advisors

## BART KAMEN SCHOLARSHIP FUND CONTRIBUTORS

John Abele■ /Argosy Foundation  
Frank DeLorenzo  
Jay Duchin  
Marcia Smith Fleres  
Margaret Frankian  
Bahi Ghazal  
Tuan Hoang

Marc Hodosh▲  
Robert Iles  
Dean Kamen■  
Kaplan Simons Family Foundation  
George Lanigan in memory of Claire C. Toohey  
Richard Lanigan in memory of Claire C. Toohey  
Lloyd Lee  
Lively Group  
Minh Nguyen  
Van Nguyen  
Anne Ortwerth & Mary Gunter  
Judith Peritz  
Ethel Rubinstein  
Dana & Kathy Seero  
Linda Stone  
Maureen Toohey  
Gary● and Diane Tooker Family Foundation  
Robert Tuttle■  
Jim Utaski●  
Josh Weston▲  
Mr. & Mrs. Vincent▲ Wilczynski  
Sandi Willsey

## 2015 FIRST ALLIANCES

American Society for Engineering Education (ASEE)  
Automation Federation/ISA  
Boys & Girls Clubs of America  
Girl Scouts of the USA  
MIT Alumni Association  
National 4-H Council  
National Center for Women & Information Technology (NCWIT)  
National Parent Teacher Association (PTA)  
National Robotics Week  
Society of Hispanic Professional Engineers (SHPE)  
Society of Women Engineers (SWE)  
Yale Science & Engineering Alumni

## 2015 FIRST SCHOLARSHIP PROVIDERS

### Platinum (\$500,000+)

Capitol Technology University  
Clarkson University  
Florida Institute of Technology  
Michigan Technological University  
Milwaukee School of Engineering  
Olin College of Engineering (Franklin W.)  
University of Advancing Technology  
University of Rochester  
U.S. Navy ROTC – St. Louis Recruiting District  
Yale University

## Gold (\$100,000-\$499,999)

Bart Kamen Memorial *FIRST* Scholarship Fund  
Boston University  
Lindenwood University  
Merrimack College  
Nipissing University  
Northeastern University  
Randolph College  
Rensselaer Polytechnic Institute  
Rochester Institute of Technology  
Rose-Hulman Institute of Technology  
Stevens Institute of Technology  
SUNY Polytechnic Institute  
Tulane University  
University of Hartford  
Webb Institute  
Bucknell University  
College of the Atlantic  
Culinary Institute of America  
Daniel Webster College  
Drexel University  
Embry-Riddle Aeronautical University - AZ  
Embry-Riddle Aeronautical University - FL  
Hudson Valley Community College  
Illinois Institute of Technology  
Instituto Tecnológico Autónomo de México (ITAM)  
Kettering University  
Lawrence Technological University  
Worcester Polytechnic Institute

## Silver (\$40,000-\$99,999)

Arizona State University  
Bradley University  
California State University Los Angeles/ Boeing  
Case Western Reserve University  
City College of New York  
Fairleigh Dickinson University  
Florida A&M University  
Gates Corporation  
Harvey Mudd College  
Johnson & Wales University  
Macquarie University  
Marquette University  
Massachusetts Institute of Technology (MIT)  
McKendree University  
Missouri University of Science and Technology  
New Jersey Institute of Technology  
Ohio State University  
Oklahoma State University  
Pace University  
Pacific University  
Raytheon Company  
Robert Morris University  
Seattle Pacific University

Temple University  
University of Cincinnati  
University of Iowa  
University of Kansas  
University of Minnesota Twin Cities  
University of Portland  
University of Saint Joseph Connecticut  
University of South Carolina  
University of Southern California  
University of Texas Arlington  
Vaughn College of Aeronautics and Technology  
Virginia Commonwealth University (VCU)

## Bronze (\$20,000-\$39,000)

Adelphi University  
California University of Pennsylvania  
Canadore College  
Carleton University  
Carnegie Mellon University  
College for Creative Studies  
Colorado State University  
Columbus College of Art and Design  
Eastern Washington University  
Frank Minolli Foundation  
Gordon College  
Grand Valley State University  
Hofstra University  
Molloy College  
Northwestern University  
Rutgers University  
St. Clair College  
Sanghi Family Foundation  
Southern New Hampshire University (SNHU)  
Texas Tech University  
University of Detroit Mercy  
University of Illinois at Chicago  
University of Maryland College Park  
University of Massachusetts Lowell - Engineering  
University of Massachusetts Lowell - Sciences  
University of Washington  
Washington University in St. Louis/Boeing  
William Paterson University  
York University

## Brass (up to \$19,999)

American Petroleum Institute  
ASME Auxiliary Inc.  
Baker University  
Boise State University  
Central Washington University  
DePaul University  
Digipen Institute of Technology  
Eagle Robotics  
East Carolina University  
Eastern Michigan University

Elbit Systems  
Farmingdale State College  
Ferris State University  
George Fox University  
Georgia Institute of Technology  
Globe University  
Hallmark University  
Idaho State University  
Indiana State University  
Indiana University – Purdue University Indianapolis (IUPUI)  
ITT Technical Institute  
Kansas State University  
Lake Superior State University  
Maryville University  
Mercer University School of Engineering & Technology  
Metropolitan Community College - Maple Woods  
Metropolitan Community College - Woods  
Mineral Area College  
Montclair State University  
Murray State University  
New York Institute of Technology  
New York University Polytechnic School of Engineering (NYU Poly)  
NHTI, Concord's Community College  
North Carolina Agricultural and Technical State University (A&T)  
North Carolina State University  
Northern Illinois University  
Nuts, Bolts and Thingamajigs Foundation  
Oregon Institute of Technology  
Oregon State University  
Pellissippi State Community College  
Pennsylvania College of Technology  
Pennsylvania State University  
Phil Clancy Memorial Scholarship  
Portland State University  
Purdue University  
Queen's University  
Redstone College  
Ryerson University  
St. Louis Community College  
Schoolcraft College  
SMaRT Education  
Society of Petroleum Engineers  
Society of Women Engineers (SWE)  
South Dakota School of Mines and Technology  
Southern California Regional Robotics Forum (SCRRF)  
Southern Methodist University  
Southwestern Michigan College  
Spring Arbor University  
SUNY Potsdam  
Texas A&M University Computer Science  
Texas Instruments Incorporated  
United States Naval Academy  
University of Central Missouri

University of Connecticut  
University of Massachusetts Amherst  
University of Minnesota, Duluth  
University of Mississippi  
University of Missouri  
University of Missouri - Kansas City  
University of Nevada, Las Vegas  
University of New Hampshire  
University of New Hampshire Manchester  
University of Ontario Institute of Technology (UOIT)  
University of South Florida  
University of Tennessee Knoxville  
University of Texas at Austin  
University of Texas at San Antonio  
University of Toronto  
University of Vermont  
University of Waterloo  
University of Windsor  
University of Wisconsin, Madison  
Velcro Industries  
Washington State University, College of Agricultural, Human, and Natural Resource Sciences  
Washington State University - Voiland College of Engineering and Architecture  
Western Carolina University  
Western University  
Whitworth University  
Xavier University  
Youngstown State University

## 2014-2015 SEASON FIRST LEGO LEAGUE JR. SPONSORS

### Program Sponsor



### Top Team Sponsors

Sponsors in this section are listed in descending order starting with the Sponsor of the highest number of teams.

John Deere  
National Defense Education Program (NDEP)  
Rockwell Automation, Inc.  
United Technologies Corporation (UTC)  
Booz Allen Hamilton, Inc.  
The Dow Chemical Company  
Motorola Solutions Foundation

## 2014-2015 SEASON FIRST LEGO LEAGUE SPONSORS

### Founding Partner



### Global Sponsors



## FIRST LEGO League Global Innovation Award presented by XPRIZE®

### Founding Partner

XPRIZE®  
Edison Nation  
The United States Patent and Trademark Office

### Partners in Innovation

Booz Allen Hamilton, Inc.  
John Deere  
LEGO® Education  
Rockwell Collins, Inc.

### Top Team Sponsors

(10 or more teams in 2014-2015)

Sponsors in this section are listed in descending order starting with the Sponsor of the highest number of teams.

National Defense Education Program (NDEP)  
John Deere  
Rockwell Collins, Inc.  
Rockwell Automation, Inc.  
Caterpillar Foundation  
Leidos, Inc.  
DC Public Schools  
GE Healthcare  
Booz Allen Hamilton, Inc.  
Motorola Solutions Foundation  
United Technologies Corporation (UTC)  
GE Energy  
Bechtel Group Foundation  
General Motors Corporation  
The Dow Chemical Company  
Motorola Mobility Foundation  
PTC, Inc.  
TE Connectivity  
SAIC  
Teradata Corporation

## Host Organizations and Championship Tournament Sponsors

### Australia

Macquarie University  
BAE Systems Australia  
Bechtel Group Foundation  
Cedars Christian College  
Curtin University  
Google.org  
Grace Lutheran College  
Granville Boys High School  
King David School  
LEGO® Education  
Narrabeen Sports High School  
NI

Northern Advanced Manufacturing Industry Group  
Queensland University of Technology  
**Austria**  
*HANDS on TECHNOLOGY e.V.*  
LEGO GmbH  
Mellowmessage GmbH  
Motorola Solutions Foundation  
NI GmbH  
SAP AG  
Vision Components GmbH  
**Bahrain**  
*King Hussein Foundation*  
Jubilee Center for Excellence in Education

### Belgium

*Stichting Techniekpromotie*  
3M Company  
ASML  
Avans Hogeschool  
Deltion College  
Discovery Center Continium  
Fontys Hogescholen  
Frencken  
Haags Centrum voor Onderwijsbegeleiding  
Hanze University Groningen  
Heutink  
Hogeschook Utrecht  
Hogeschool Vives IWT (Belgium)  
HZ University of Applied Sciences  
IBM Corporation  
ISW Poeldijk  
Jet-Net  
Katholieke Hogeschool Leuven (Belgium)  
Kenniscentrum Bèta Techniek  
The LEGO Group  
NFGD  
NI  
POA Valleiregio  
Prowise  
Radboud Universiteit Nijmegen  
Rijksuniversiteit Groningen  
ROC Drenthe College  
Rockwell Automation, Inc.  
Saxion  
Science Center Delft  
Sluijs Management  
Statoil  
Stichting DOENK  
Summa College  
Techniektalent.nu  
Technische Universiteit Delft  
Technische Universiteit Eindhoven  
Trudo Klokgebouw Eindhoven  
Universiteit Leiden  
Universiteit Twente  
Universiteit Utrecht  
Universiteit van Amsterdam

VOKA (Kamer van Koophandel) Limburg (Belgium)  
Vrije Univesiteit Amsterdam  
Wageningen Universiteit  
YouTech  
**Brazil**  
*SESI - Brazilian Social Services of Industry-National Department*  
ABC - Brazilian Science Academy  
Colégio Eduardo Gomes (Primary and High School)  
Federal Institute of Paraná  
General Motors Company, Brazil  
NI Brazil  
OBR - Brazilian Robotics Olympics  
Rockwell Automation, Inc., Brazil  
SESI Regional Departaments (9): Amazonas, Bahia, Distrito Federal, Goiás, Minas Gerais, Paraná, São Paulo, Rio Grande do Sul, Rio Grande do Norte

### ZOOM Education

### Canada

**Alberta**  
Alberta Youth Robotics Society  
Association of Professional Engineers, Geologists and Geophysicists of Alberta  
Association of Science and Engineering Technology  
Edmonton Catholic Schools  
City of Edmonton  
Edmonton Economic Development  
**Newfoundland and Labrador**  
College of the North Atlantic, PPD Campus  
Department of Business, Tourism, Culture and Rural Development (BTCRD) (Government of Newfoundland and Labrador)  
Skills Canada Newfoundland and Labrador  
Statoil  
Verafin, Inc.

### Nova Scotia

Acadia University  
Community One  
Connell Chrysler Dodge Jeep  
Lockheed Martin Corporation  
Long & McQuade  
Michelin Canada  
The Natural Sciences and Engineering Research Council of Canada (NSERC)  
Nova Scotia Business Inc.  
Nova Scotia Community Colleges (NSCC)  
Pratt & Whitney Canada (PWC)  
Province of Nova Scotia – Economic and Rural Development and Tourism  
Province of Nova Scotia – Labour and Advanced Education  
RBC Corporation (Royal Bank)  
**Ontario**  
Durham College  
HexBugs  
McMaster University  
Government of Ontario

Ontario Power Generation  
Qualcomm Incorporated  
Synnex  
University of Ontario Institute of Technology  
University of Waterloo  
Yves Landry Foundation

**Québec**  
BMO Financial Group  
Bombardier  
Brault & Bouthillier  
Commission Scolaire Beauce-Etchemins  
Commission Scolaire de la Pointe-De-L'Île  
Commission Scolaire de Montréal  
Commission Scolaire Marguerite-Bourgeoys  
CRSNG

Emplois Compétences  
English-Montreal School Board  
Fondation Joseph Armand Bombardier  
Fondation Lucie et André Chagnon  
General Electric Company (GE)  
Groupe Canam  
Manac  
Ménard Family  
City of Montreal  
Réseau Réussite Montréal  
Robotique *FIRST* Québec  
Saputo  
Université de Sherbrooke  
Youth Fusion

### Chile

*Fundación SparkTalents*  
Bechtel Group Foundation  
Inacap

### China

*Semia Limited*  
Bechtel Group Foundation  
The Boeing Company, China  
Xi’an Jiaotong-Liverpool University

### Colombia

*Fundación Global Arte Ciencia y Tecnología*

### Czech Republic

*HANDS on TECHNOLOGY e.V.*

Eduxe  
LEGO GmbH  
Mellowmessage GmbH  
Motorola Solutions Foundation  
NI GmbH  
SAP AG  
Vision Components GmbH

### Denmark

*FIRST Scandinavia*  
The Norwegian Directorate for Education and Training  
The Norwegian Public Roads Administration  
Norwegian Research Council  
SKS  
Statoil  
Tekna

### Dominican Republic

*Fundación para el Desarrollo de las Ciencias y Tecnología*

Design Studio, The Bold Look of Kohler

Familia León-Rivera

### Egypt

*Robotics, Technology and Human Resources Development Association*

Ministry of Communication and Information Technology

Techno Future Egypt

Technology Innovation Entrepreneurship Center

### Estonia

*MTÜ Robotika*

AHHAA  
A.Le.Coq  
Büroomaailm  
Eformular  
Energia Avastuskeskus  
HARIDUS-JA TEADUSMINISTEERIUM  
HASARTMÄNGUMAKSU NÕUKOGU  
Hinnavaatlus OÜ  
HITSA  
Kaitseressursside Amet  
KÕU

KUMA print  
Nutilabor  
ROBOMIKU  
ROBOTEX  
Saku Läte  
Škoda Tallinn  
Swedbank  
TARTU ÜLIKOOL

### Faroe Islands

*FIRST Scandinavia*

The Norwegian Directorate for Education and Training

The Norwegian Public Roads Administration  
Norwegian Research Council

SKS

Statoil

Tekna

### France

*Association MEDIO Sciences Environnement*  
Aquitaine Robotics  
Association Arcadie  
Assomption Sainte Clotilde Bordeaux  
Ville de Bordeaux  
Conseil Général de Gironde  
Conseil Général de la Nièvre  
Le Cube (Centre de Création Numérique Grand Paris Seine Ouest)  
ENSEIRB MATMECA (Ecole d’ingénieur)  
ISTY (Institut des Sciences et Techniques des Yvelines)  
Jeulin  
Jeunes Sciences Bordeaux  
LEGO® Education

Ville de Meudon  
Ville de Nevers  
Nièvre Numérique  
Ville de Saint Etienne

### Germany

*HANDS on TECHNOLOGY e.V.*

LEGO GmbH  
Mellowmessage GmbH  
Motorola Solutions Foundation  
NI GmbH  
SAP AG

Vision Components GmbH

### Greece

*EduACT*  
91.1FM  
Alexander Innovation Zone S.A.  
The American Consulate General in Thessaloniki  
Aristotle University of Thessaloniki School of Philosophy and Education  
AXON Global Education Network  
BETA CAE Systems S.A.  
e-Charity

Epi-Direct Leda Papadopoulou - Communication Experts

epiloges.gr

Ethnos Newspaper  
FM100  
Greek Rescue Team  
Hellenic Petroleum S.A.  
hello advertising  
IEK AKMH - AKMI College  
Inter Brokers - Interbrokers, Insurance Company  
Interworks S.A.  
Karfitsa.gr

Keridis Works Company  
Kleemann  
Municipality of Kordelio-Evosmou  
Livemedia  
Makedonia Newspaper  
Makedonia TV  
Ministry of Macedonia and Thrace  
MLS

ΜΠΕΛΛΗΣ Κ. & ΣΙΑ O.E.  
Nerit 102 FM  
Olympia Electronics  
THE P&M Printing Fashion Company  
Municipality of Pilea-Chortiati  
Print Xpress Company

Radio Thessaloniki  
Region of Central Macedonia  
Regional Solid Waste Management Association of Central Macedonia  
Science Center and Technology Museum “NOESIS”

Seven  
Studio 8 Photography  
SUNSHINE 107.7

Municipality of Thessaloniki  
Thessaloniki Concert Hall Organization  
ThessPrint  
TV100

Vikos Zagorochoria  
XPQMA FM 105.8

Youth Foundation of the Metropolis of Neapolis and Stavropolis

Υπουργείο Πολιτισμού, Παιδείας και Θρησκευμάτων (Hellenic Ministry of Culture, Education and Religious Affairs)

Πυλολαμπίδες στο κλουβί

### Haiti

*FEDUDEVH*  
*FIRST* Tech Challenge Team 6081 “i?robotics”  
*FIRST* Robotics Competition Team 384 “Sparky”

Lakai Marie  
LEGO Foundation

### Hong Kong

*Semia Limited*  
Hong Kong Youth Federation

### Hungary

*HANDS on TECHNOLOGY e.V.*  
LEGO GmbH  
Mellowmessage GmbH  
Motorola Solutions Foundation  
NI GmbH  
SAP AG

Vision Components GmbH

### Iceland

*FIRST* LEGO League á Íslandi  
Krumma  
Nýherji  
University of Iceland

### India

*India STEM Foundation*  
Caterpillar, Inc.  
John Deere  
LEGO Foundation  
Techtronics Education

### Indonesia

*Mikrobot*  
ABC Alkaline  
Axioo  
Cerebrofort & Cerebrovit  
Tunjungan Plaza

### Israel

*FIRST Israel*  
Bank Hapoalim  
City of Dimona  
Ha'Kfar Ha'Yarok  
City of Hertzeliya  
City of Jerusalem  
City of Kfar Yona  
Meitar Council  
Misgav Council

City of Modiin– Makkabim – Reut  
City of Nes Tziyona  
City of Ra’anana  
City of Rehovot  
Robotec  
Technion – Israel Institute of Technology  
Tel-Aviv Yaffo Academic College  
City of Tel Aviv Yaffo  
World ORT  
City of Yerucham

### Italy

*Fondazione Museo Civico di Rovereto*  
100-ONE  
Apt di Rovereto  
ART TEH (Almese - TO)  
Caterpillar, Inc.  
Istituto Don Milani  
Media Direct srl  
Montura  
Polo Meccatronica Rovereto  
UCIMU  
Cfp G. Veronesi

### Japan

*FIRST Japan*  
Crefus Corporation  
The Japan Society of Mechanical Engineers  
LEGO® Education  
Tokyo Institute of Technology

### Jordan

*King Hussein Foundation*  
Booz Allen Hamilton, Inc.  
Jubilee Center for Excellence in Education

### Republic of Korea

*FEST (Feeling and Enjoying Science & Technology Organization)*  
C & M Broadcasting, Inc.  
Dongseo Culture  
FUNERS  
LEGO® Education  
UL Korea

### Kuwait

*King Hussein Foundation*  
Jubilee Center for Excellence in Education  
**Latvia**  
*MTÜ Robotika*  
Argus RT SIA  
U.S. Embassy in Riga, Latvia

### Lebanon

*Cedars Cultural School-Education and Technology Center*

American University in Beirut (AUB)

Nestle

### Lithuania

*Robotikos Akademija*  
Baltic Orbis  
INFOBALT

### Luxembourg

*Stichting Techniekpromotie*  
3M Company  
ASML  
Avans Hogeschool  
Deltion College  
Discovery Center Continium  
Fontys Hogescholen  
Frencken  
Haags Centrum voor Onderwijsbegeleiding  
Hanze University Groningen

Heutink  
Hogeschook Utrecht  
Hogeschool Vives IWT (Belgium)  
HZ University of Applied Sciences  
IBM Corporation  
ISW Poeldijk  
Jet-Net  
Katholieke Hogeschool Leuven (Belgium)  
Kenniscentrum Bêta Techniek  
The LEGO Group  
NI  
NFGD

POA Valleiregio  
Prowise  
Radboud Universiteit Nijmegen  
Rijksuniversiteit Groningen  
ROC Drenthe College  
Rockwell Automation, Inc.  
Saxion  
Science Center Delft  
Sluijs Management  
Statoil  
Stichting DOENK  
Summa College  
Techniektalent.nu  
Technische Universiteit Delft  
Technische Universiteit Eindhoven  
Trudo Klokgebouw Eindhoven  
Universiteit Leiden  
Universiteit Twente  
Universiteit Utrecht

Universiteit van Amsterdam  
VOKA (Kamer van Koophandel) Limburg (Belgium)  
Vrije Universiteit Amsterdam  
Wageningen Universiteit  
YouTech

**Malaysia**  
*Sasbadi Holdings Berhad*  
Bechtel Group Foundation - Malaysia  
CIMB Foundation  
The Institution of Engineering and Technology (IET)  
KDU University College  
LEGO® Education  
Majlis Amanah Rakyat (MARA)  
Ministry of Education, Malaysia

Motorola Solutions Foundation  
National Science Centre (MOSTI)  
Penang Science Council  
Politeknik Ungku Omar, Ipoh, Perak  
State Education Departments  
Taylor’s University  
Telekom Malaysia Berhad  
Universiti Teknologi MARA (UiTM), Tapah, Perak  
Universiti Teknologi PETRONAS (UTP), Perak

## Mexico

*Explora, Descubre Y Crea, AC*  
General Motors Company, México  
Instituto Tecnológico Autónomo de México (ITAM)  
Instituto Tecnológico y de Estudios Superiores de Monterrey - Campus Toluca

MUTEC – Museo de Tecnología y Ciencia  
Bárbara and Ignacio Navarro  
Oxford School of English, A.C.  
Promedici, S.A. de C.V.  
Rockwell Automation, Inc.

### Montenegro

*Young Inventors of Montenegro*  
Municipality Bar  
Municipality Bijelo Polje  
Municipality Cetinje Domen  
Elko Tim  
Fleka  
Mensa Montenegro  
Ministry of Education, Government of Montenegro  
Ministry of Labour and Social welfare, Government of Montenegro  
Ministry of Science, Government of Montenegro

Neckom  
Telenor  
**Netherlands**  
*Stichting Techniekpromotie*  
3M Company  
ASML  
Avans Hogeschool  
Deltion College  
Discovery Center Continium  
Fontys Hogescholen  
Frencken  
Haags Centrum voor Onderwijsbegeleiding  
Hanze University Groningen  
Heutink  
Hogeschook Utrecht  
Hogeschool Vives IWT (Belgium)  
HZ University of Applied Sciences  
IBM Corporation  
ISW Poeldijk  
Jet-Net  
Katholieke Hogeschool Leuven (Belgium)  
Kenniscentrum Bêta Techniek

The LEGO Group  
NI  
NFGD  
POA Valleiregio  
Prowise  
Radboud Universiteit Nijmegen  
Rijksuniversiteit Groningen  
ROC Drenthe College  
Rockwell Automation Inc.  
Saxion  
Science Center Delft  
Sluijs Management  
Statoil  
Stichting DOENK  
Summa College  
Techniektalent.nu  
Technische Universiteit Delft  
Technische Universiteit Eindhoven  
Trudo Klokgebouw Eindhoven  
Universiteit Leiden  
Universiteit Twente  
Universiteit Utrecht  
Universiteit van Amsterdam  
VOKA (Kamer van Koophandel) Limburg (Belgium)

Vrije Universiteit Amsterdam  
Wageningen Universiteit  
YouTech  
**New Zealand**  
*Kiwi FIRST*  
Academic Colleges Group  
DMXking.com

**Nigeria**  
*CODERINA*  
National Information Technology Development Agency (NITDA)  
SAP  
University of Abuja

**Norway**  
*FIRST Scandinavia*  
The Norwegian Directorate for Education and Training  
The Norwegian Public Roads Administration  
Norwegian Research Council  
SKS  
Statoil  
Tekna

**Oman**  
*King Hussein Foundation*  
Jubilee Center for Excellence in Education  
**Pakistan**  
*STARiALL (Science and Technology Awareness-and Recognition for All)*  
GIFT University  
LEGO Foundation  
Robo Campus



The Schreier-Edison Foundation  
Society of Petroleum Engineers - Delta Section  
Tulane University  
University of New Orleans  
**Maine**  
Maine School of Science and Mathematics  
Robotics Institute of Maine  
University of Maine, College of Engineering  
**Maryland**  
BAE Systems  
Booz Allen Hamilton, Inc.  
Northrop Grumman Corporation  
Rockwell Collins, Inc.  
**Massachusetts**  
Raytheon Company  
Worcester Polytechnic Institute  
**Michigan**  
FCA Foundation  
FCA US LLC  
*FIRST* in Michigan  
Ford Motor Company  
General Motors Company  
**Minnesota**  
3M Foundation  
Boston Scientific Corporation  
H.B. Fuller Foundation  
Magenic  
Merchant & Gould  
St. Jude Medical Foundation  
**Mississippi**  
Mississippi Power Education Foundation  
U.S. Army Engineer Research and Development Center  
**Missouri – Eastern MO – St. Louis**  
ABNA Engineering, Inc.  
Afton Chemical Corporation  
John S. & Natalie P. Alberici  
Avnet  
Harry Baker  
Cooper Bussman  
Diversified Payment Solutions  
The Doerr Family  
Electrical Connection  
Emerson  
Employees Community Fund of The Boeing Company, St. Louis  
Gateway to Innovation (G2I)  
Innoventor, Inc.  
ITT Technical Institute  
James Mulligan Printing  
Dr. & Mrs. Ernest G. Jaworski  
Laboratory Robotics Interest Group  
Lee Foundation  
Lindbergh School District  
Lindenwood University  
Carol B. Loeb  
Maritz  
Maryville University  
MasterCard Worldwide

McKendree University  
MICDS  
Midwest Laboratory Robotics Interest Group  
Missouri University of Science and Technology  
Parks College of Engineering, Aviation and Technology  
The Pennington Family  
Ranken Technical College  
Kathie Reuter  
Jerry & Peggy Ritter  
Rockwell Automation, Inc.  
The Saigh Foundation  
St. Charles Community College  
St. Louis Cardinals Care Foundation  
St. Louis Community College  
Saint Louis Science Center  
Saint Louis University  
The Seeser Family  
Siemens Corporation  
Southeast Missouri State University  
Spoehrer Family Foundation  
Technology Partners, Inc.  
U-Gas Convenience Stores  
University City School District  
U.S. Air Force  
U.S. Army  
Washington University in St. Louis Engineering  
The Wolfe Family  
**Missouri – Columbia**  
Missouri 4-H Robotics  
Missouri 4-H Center for Youth Development  
MORENET  
MU College of Education  
MU College of Engineering  
**Montana**  
Advanced Electronic Designs  
American Computer Museum  
Billings Public Schools  
ExxonMobil Foundation  
Montana State University - College of Engineering  
Montana State University - Office of the Provost  
Montana Tech  
M.J. Murdock Charitable Trust  
Oracle  
Verizon Wireless  
**Nebraska**  
Nebraska 4-H Foundation  
Time Warner Cable  
University of Nebraska-Lincoln Extension  
**Nevada**  
*FIRST* Nevada  
Garfield Family  
IBM Software Group  
Knights of Pythias  
Micromanipulator, Carson City  
National Security Technology, LLC  
Partners for Community Inc.  
Republic Services

Rich, Wightman & Company  
Society of Women Engineers (SWE)  
**New Hampshire**  
BAE Systems  
Nashua High School South  
**New Jersey**  
County College of Morris  
Mount Olive Board of Education  
Rockefeller Group Development Corporation  
Siemens Diagnostics Products  
**New Mexico**  
Bricks & Minifigs  
Evaluation  
General Mills Albuquerque Plant  
Lockheed Martin/Sandia National Laboratories  
New Mexico Museum of Natural History and Science  
Northrop Grumman Corporation  
Office Depot/Office Max  
OGB Millworks  
**New York – Finger Lakes**  
University of Rochester  
Valeant  
Wegmans  
Xerox Corporation  
**New York – Long Island**  
Bank of America - Andy Margolin  
Brookhaven National Laboratory  
Central Islip Public Schools  
Connetquot School District  
LEGO® Education  
Longwood Central School District  
LuHi Summer Camp Programs  
Mineola Public Schools  
Karen Newman  
Park Shore Country Day Camp  
Plainview-Old Bethpage School District  
Sideboard Computers  
Sir Speedy – Plainview  
Jeffrey Stern, Attorney  
Vera Bradley - Walt Whitman Mall  
**New York – Mid-Hudson**  
Adva Optical Networks  
IBM Corporation  
IEEE Mid-Hudson Section  
International *FIRST* LEGO League  
**New York – New York City**  
AB  
Bloomberg L.P.  
Consolidated Edison Company of New York, Inc.  
Michael Dubno▲  
Goldman Sachs Group, Inc.  
Google.org  
Pershing Square Foundation  
Siegel Family Endowment  
Two Sigma Investments, LLC  
**New York – Potsdam**  
Adirondack Energy

BAE Systems  
Clarkson University  
National Grid  
Northern Machining  
PPC: A Belden Brand  
St. Lawrence-Lewis BOCES  
Time Warner Cable Company: Connect a Million Minds  
U.S. Air Force  
**New York – Utica**  
BAE Systems  
Black River Systems Company Inc.  
Hitechnic-Dataport Systems  
Research Associates of Syracuse  
SUNY Polytechnic Institute  
Trenton Technology, Inc.  
**North Carolina**  
Duke Energy  
North Carolina Agricultural and Technical State University (A&T), College of Engineering  
TE Connectivity  
**North Dakota**  
Advanced Engineering and Environmental Services, Inc. (AE2S)  
Bobcat Company  
EAPC Architects & Engineers  
Greater Grand Forks Convention and Visitors Bureau  
HB Sound & Light  
John Deere  
Minnkota Power Cooperative, Inc.  
Otter Tail Power Company  
S&S Promotional Group Inc.  
University of North Dakota College of Engineering and Mines  
University of North Dakota Memorial Union  
Whalen’s Moving & Storage  
Xcel Energy  
**Ohio**  
ASME - Dayton Section  
Holiday Inn - Fairborn  
The Ohio Educational Outreach Foundation  
Rockwell Automation, Inc.  
The Wright State University  
The Wright-Patterson Air Force Base Educational Outreach  
**Oklahoma**  
AT&T, Inc.  
The Chickasaw Nation  
Mike Hoy, Mobile DJ  
Oklahoma State University, College of Engineering, Architecture and Technology  
**Oregon**  
Bonneville Power Administration  
Electro Scientific Instruments, Inc.  
FEI Company  
Garmin  
Google Data Centers Grants Fund of Tides Foundation

IBM Corporation  
Intel Corporation  
Oregon Nanoscience and Microtechnologies Institute  
Oregon University System  
PH Tech  
Portland Community Media  
Rockwell Collins, Inc.  
Techatronix  
Timbercon  
Vernier Software & Technology  
Vista Masonic Lodge #215  
**Pennsylvania – Northwest**  
Little Caesars  
Eriez Magnetics  
Penn State Behrend - Youth Education Outreach Office  
**Pennsylvania – Southeast**  
Archbishop Wood High School  
Central High School  
Downingtown Area Robotics  
The Franklin Institute  
Girl Scouts of Eastern Pennsylvania  
Hatboro-Horsham School District  
The Haverford School  
Owen J. Roberts School District  
The School District of Philadelphia  
Springside-Chestnut Hill Academy  
Patton Middle School  
University of Pennsylvania - GRASP Laboratory  
**Pennsylvania – Southwest Central**  
CBM - Business Machines  
Community Foundation for Alleghenies  
Galliker Dairy Company  
Goodwill Industries of the Conemaugh Valley  
Greater Johnstown Career and Technology Center  
Lift Johnstown  
Westmont Hilltop School District  
**Pennsylvania – West**  
BrainSTEM Learning  
Carnegie Mellon’s Robotics Academy  
NXT Innovations  
Robomatter, Inc.  
**Puerto Rico**  
Holsum  
Liberty  
Metro EDP University  
**Rhode Island**  
Active Data Solutions  
AIR 4-H  
All Saints STEAM Academy  
Bryant University/ RI NSF EPSCoR  
Dr. Edward A. Ricci Middle School  
Humanity Centered Robotics Initiative at Brown University  
IEEE Providence Section  
Iigus, Inc.  
Kickemuit Middle School  
David Livingston

Narragansett Pier Middle School  
National Grid  
Navy Federal Credit Union  
NE *FIRST*  
New England Institute of Technology  
Roger Williams University  
SAIC  
Salve Regina University  
Textron Charitable Trust  
**South Carolina**  
LEGO Foundation  
SAIC  
Society of Women Engineers (SWE)  
Space Naval Warfare Systems Center Atlantic  
**South Dakota**  
Augustana College  
Block Productions  
Creative Kindling  
Healthy Family/Healthy Youth, Pierre SD  
Sioux Falls Public Schools  
South Dakota Discovery Center  
South Dakota Robotics Association  
South Dakota School of Mines  
South Dakota Space Grant Consortium  
**Tennessee - East**  
Oak Ridge Associated Universities  
Tennessee Tech University  
Tennessee Valley Authority (TVA)  
UT-Battelle  
**Tennessee - West**  
Institute of Electrical and Electronic Engineers (IEEE)  
Smith & Nephew  
Tennessee Society of Professional Engineers (TSPE)  
Tennessee Valley Authority (TVA)  
University of Memphis  
**Texas – Alamo/San Antonio**  
Akimeka  
CPS Energy  
Frost Bank  
Lockheed Martin Corporation  
Rackspace Hosting  
Time Warner Cable  
Valero  
**Texas – Central/Austin**  
Dell, Inc.  
Freescale  
NI  
Panera Bread Co.  
Penske  
Silicon Labs  
Skillpoint STEM Council  
Spansion  
Tokyo Electron  
**Texas – North/Dallas**  
ExxonMobil Corporation  
Lockheed Martin Corporation  
Perot Museum of Nature and Science

Rockwell Collins, Inc.  
**Texas – South/Houston**  
University of Houston  
**Texas – Southwest/El Paso**  
El Paso STEM Foundation  
Ft. Bliss – Brigade Modernization Command (BMC)  
IEEE EP Professional Section  
IEEE RAS Student Chapter  
National Aeronautics and Space Administration (NASA)  
NI  
**Utah**  
Boart Longyear  
IM Flash Technologies  
Lund Foundation  
Gary & Nancy Schmitt  
STEM Action Center  
University of Utah  
Utah Education Network  
Utah Educational Savings Plan  
Verizon Wireless  
Williams  
**Virginia/DC**  
Booz Allen Hamilton, Inc.  
Industrial Medium Software  
James Madison University  
College of Education  
College of Integrated Science and Technology  
College of Science and Mathematics  
School of Engineering  
Leidos, Inc.  
Rockwell Collins, Inc.  
SAIC  
The United States Patent and Trademark Office  
Turning Points Software  
**West Virginia**  
Cherie Bharti  
Fairmont State University, College of Science and Technology  
NASA IV&V Robotics Alliance Project  
ParMar Stores  
Thrasher  
West Virginia Higher Education Policy Commission, Division of Science and Research  
West Virginia Space Grant  
**Wisconsin**  
Bemis  
Plexus  
Rockwell Automation, Inc.  
**Wyoming**  
Casper Area Convention Bureau  
City of Casper  
Casper College  
Central Wyoming Board of Cooperative Educational Services  
ConocoPhillips Company  
Greiner Motor Company  
Natrona County Recreational Joint Powers Board

Natrona County School District  
Nobe, Inc. Screenprinting & Embroidery  
Pepsi  
Anita Pinkham  
**Yemen**  
*King Hussein Foundation*  
Jubilee Center for Excellence in Education

**2014-2015 SEASON  
FIRST TECH CHALLENGE  
SPONSORS**

Official Program Sponsor



CAD and Collaboration Sponsor



**Top Team Sponsors**

(10 or more teams in 2014-2015)

Sponsors in this section are listed in descending order starting with the Sponsor of the highest number of teams.

- Alcoa
- PTC, Inc.
- Rockwell Collins, Inc.
- National Defense Education Program (NDEP)
- The Boeing Company
- John Deere
- Rockwell Automation, Inc.
- Leidos, Inc.
- Abbott Fund
- Motorola Solutions Foundation
- Bechtel Group Foundation
- GE Energy
- United Technologies Corporation (UTC)
- The Dow Chemical Company
- NRG Energy, Inc.
- Teradata Corporation
- Booz Allen Hamilton, Inc.
- Caterpillar Foundation
- TE Connectivity
- Best (Picatinny)
- Renasas
- SAIC
- Rookie Team Grantors**
- Argosy Foundation
- Center for Energy Workforce Development (CEWD)
- DEKA Foundation
- FedEx Corporation
- The LEGO Group
- United Therapeutics Corporation
- Tournament Sponsors**
- Australia**
- Bechtel Group Foundation
- Macquarie University
- NI
- Canada**
- Alberta**
- Husky Energy École Maurice-Lavallée  
Conseil scolaire Centre-Nord

**Central and Eastern Europe**

- Central and Eastern European School Association
- NOEN, a.s.
- PTC, Inc.
- China**
- Bechtel Group Foundation - China
- Beijing Ministry of Education
- The Boeing Company, China
- Caterpillar Foundation, China
- Chongqing University
- NI
- PTC, Inc.
- Qinghua University
- Qualcomm Incorporated
- Shenzhen Museum of Science and Technology
- South China Institute of Technology
- Southeastern University
- Tongji University
- France**
- Fondation partenariale Grenoble INP
- Fontaine
- Grenoble INP
- Grenoble-Alpes Metropole
- NI
- PTC, Inc.
- Région Rhône Alpes
- Germany**
- Heinz Nixdorf Museums Forum Paderborn
- Novelis
- PTC, Inc.
- India**
- Bechtel Group Foundation
- Caterpillar Foundation
- John Deere
- PTC, Inc.
- Techtronics Education (India), Ltd.
- United Technologies Corporation (UTC)
- Republic of Korea**
- C & M Broadcasting, Inc.
- FUNERS
- Novelis
- Qualcomm Incorporated
- U.S. Embassy Seoul
- Mexico**
- Centro Nacional de Actualizacion Docente
- Fundación Azteca de Grupo Salinas
- Fundación Televisa
- Instituto Tecnológico Autónoma de México (ITAM)
- Rockwell Automation, Inc.
- Secretaria de Economía
- Secretaría de Educacion Publica

**Netherlands**

- EHV365 (City of Eindhoven)
- Fontys University
- KMWE
- PTC, Inc.
- New Zealand**
- ACG Strathallan
- Kiwi *FIRST*
- Russia**
- Agency for Strategic Initiatives
- EN+ Group
- GAZ Group
- Russian Federal Agency of Youth Affairs
- Volnoe Delo
- South Africa**
- Benchoff South Africa
- Burkett South Africa
- Tshwane University of Technology
- Vega South Africa
- Taiwan**
- K Kingdom Inc.
- NI
- United States**
- FIRST Tech Challenge Super-Regional National Sponsors**
- Center for Energy Workforce Development (CEWD)
- Rockwell Collins, Inc.
- East Super-Regional Championship**
- Rockwell Collins, Inc.**
- Center for Energy Workforce Development (CEWD)
- Kerith Foundation
- Lockheed Martin Corporation
- Rockwell Collins, Inc.
- North Super-Regional Championship Presented by Rockwell Collins, Inc.**
- Center for Energy Workforce Development (CEWD)
- Greater Des Moines Partnership
- John Deere
- Kinze Manufacturing
- Rockwell Collins, Inc.
- University of Iowa College of Engineering
- South Super-Regional Championship**
- AKIMEKA
- Booz Allen Hamilton, Inc.
- Center for Energy Workforce Development (CEWD)
- CPS Energy
- Graebel Van Lines
- Hallmark University
- NI
- Prism Technologies Group
- Rackspace

- Rockwell Collins, Inc.
- SASTEMIC
- Tesoro Corporation
- Texas Workforce Commission
- Toyota Motor Manufacturing Texas
- University of Texas at San Antonio
- U.S. Air Force
- U.S. Navy
- Whataburger
- West Super-Regional Championship Presented by Google.org**
- Center for Energy Workforce Development (CEWD)
- Google.org
- Northrop Grumman Corporation
- Playing At Learning
- Rockwell Collins, Inc.
- Alaska**
- Alaska Airlines
- Alaska Communications
- Alaska Development Corporation
- Anchorage School District
- BP Corporation North America, Inc.
- Fairbanks North Star School District
- GCI
- Juneau Economic Development Council
- Lower Kuskokwim School District
- North Slope Borough School District
- University of Alaska Anchorage, School of Engineering
- University of Alaska Fairbanks, College of Engineering and Mines
- Arizona**
- Alcoa Foundation
- Bioscience High School
- Cesar Chavez High School
- Coconino High School
- Estrella Foothills High School
- Findlay Toyota
- FIRST* Robotics Competition Team 2486 "CocoNuts"
- FIRST* Tech Challenge:  
Team 322 "SciTech"  
Team 2844 "Valley X"  
Team 3928 "AstroNuts"  
Team 5132 "AHERT Ravens"  
Team 5138 "AHERT Ravens"  
Team 5661 "EFHS Wolves"  
Team 6422 "Green Dragons"
- Manual School
- Arkansas**
- Arkansas *FIRST* Incorporated
- Entergy
- FIRST* Robotics Competition Team 16 "Bomb Squad"
- McDonald's: Mountain Home
- Mountain Home Public Schools
- Twin Lakes Community Foundation
- California, Los Angeles**
- Rockwell Collins, Inc.

- California, Northern**
- Intel Corporation
- Playing At Learning
- Colorado**
- Adams County School District
- Ball Corporation
- Colorado Cotton Mine
- Colorado Mountain College
- Colorado STEM Education
- Douglas County School District
- Google.org
- Krispy Kreme Donuts
- LAUNCH 4 Education
- Mimi's Cafe
- Office Depot
- Prospect Ridge Academy
- PTC, Inc.
- Sam's Club
- Solicon Technologies
- Starbucks
- United Launch Alliance (ULA)
- Weld RE-4 District
- Wolf Robotics
- Connecticut**
- Anonymous
- Barnet Associates LLC
- Greens Farms Academy
- Greenwich Academy
- HomeVision Group
- Loomis Chaffee School
- Northeast Utilities Foundation
- Planet Pizza
- Pro Shop Solutions
- Ridgefield Screen Printing
- Delaware**
- Agilent
- Axalta Coating Systems
- Delaware State University
- DuPont CCRE
- DuPont Engineering
- First State Robotics
- Honda Foundation
- Florida**
- Rockwell Collins, Inc.
- Saint Leo University
- Tampa Bay Robotics Foundation, Inc.
- Georgia**
- Alcoa
- Cisco Systems, Inc.
- Georgia *FIRST* Robotics
- Kennesaw State University
- Mount Paran Christian School
- Southern Polytechnic University
- Hawai'i**
- Ala Moana Hotel
- Aston Hotels and Resorts
- BAE Systems
- Booz Allen Hamilton, Inc.
- City Mill

- Clear Channel
- FedEx Corporation
- Hawai'i Academy of Science
- Hawai'i Self Storage
- Matson
- McDonald's
- Midweek
- MW Group, Ltd.
- Northrop Grumman Corporation
- Oceanic Time Warner Cable
- Star Advertiser
- Starn, O'Toole, Marcus & Fisher
- University of Hawai'i
- Idaho**
- Micron Foundation
- University of Idaho, College of Agricultural & Life Sciences Extension 4-H
- University of Idaho Support Services
- Illinois**
- Baxter International, Inc.
- FIRST* Illinois Robotics
- Google.org
- Motorola Solutions Foundation
- Navistar
- Indiana**
- 4-H
- Indiana Virtual Professionals
- FIRST* Robotics Competition:  
Team 135 "Penn Robotics"  
Team 1741 "Red Alert Robotics"
- Iowa**
- The College of Engineering at the University of Iowa
- Des Moines Partnership Alliance
- Iowa Governors STEM Advisory Council
- John Deere
- Kinze Manufacturing
- Rockwell Collins, Inc.
- Kentucky**
- Alcoa Foundation
- AMTEC
- Domino's Pizza
- Domtar
- Owensboro Community and Technical College
- Time Warner Cable
- Maryland**
- American Society of Mechanical Engineers
- Capitol Technology University
- Community Foundation of Howard County
- General Dynamics Advanced Information Systems
- Johns Hopkins University Applied Physics Lab
- Leidos, Inc.
- Microsoft Corporation
- Rockwell Collins, Inc.
- UPS Store 847
- Massachusetts**
- Andover High School

- Arlington High School
- Draper Laboratory
- Lexington High School
- Milton Public Schools
- MIT Lincoln Laboratory
- Needham High School
- PTC, Inc.
- Ursuline Academy
- Michigan**
- Applied Manufacturing Technologies
- Comau
- Consumers Energy
- Ford Motor Company
- General Electric Aviation
- General Motors Company
- Gorman's
- PTC, Inc.
- State of Michigan Dept. of Education
- Minnesota**
- Boston Scientific Corporation
- St. Jude Medical Foundation
- Stratasys
- University of Minnesota College of Science and Engineering
- Mississippi**
- Copiah-Lincoln Community College
- Delta Health Alliance
- Entergy - Mississippi
- University of Mississippi Center for Mathematics and Science Education
- University of Mississippi Provost Office
- University of Mississippi School of Education
- University of Mississippi School of Engineering
- Missouri**
- ABNA Engineering
- APWA – American Public Works Association
- Bishop DuBourg High School
- Black & Veatch
- Blue Scope
- Burns & McDonnell
- Camdenton School District
- Cerner
- Destination St. Louis
- The Doerr Family
- DST Systems
- Emerson
- Employees Community Fund of The Boeing Company, St. Louis
- Garmin
- Gateway to Innovation (G2I)
- Girl Scouts of Eastern Missouri
- Honeywell International Inc.
- James Mulligan Printing
- KCPL
- Marion Kauffman Foundation
- Maryville University
- Mercer
- Metropolitan Community College Business & Technology

- MICDS
- Missouri University of Science and Technology
- MRI Global
- Partners for Progress of Greater St. Charles
- Ranken Technical College
- Kathie Reuter
- River City Robots
- Rockwood School District
- Rolla School District
- St. Charles Community College
- St. Charles West High School
- St. Louis Community College Foundation
- St. Louis Community College – Florissant Valley
- St. Louis Community College – Forest Park
- St. Louis Community College – Meramec
- St. Louis Convention and Visitors Commission
- St. Margaret of Scotland
- Southeast Missouri State University
- UMKC - School of Computing and Engineering
- University City School District
- U.S. Engineering
- VML
- The Wolfe Family
- Montana**
- Advanced Electronic Designs
- American Computer Museum
- Billings Public Schools
- ExxonMobil Foundation
- Montana Space Consortium
- Montana State University - College of Engineering
- Montana State University - Office of the Provost
- Montana Tech
- Oracle
- Verizon Wireless
- Nebraska**
- Nebraska 4-H Foundation
- Time Warner Cable
- University of Nebraska - Lincoln College of Engineering
- University of Nebraska - Lincoln 4-H Extension
- Nevada**
- FIRST* Nevada
- General Electric Company (GE)
- H&J Hoppert
- Jensen Precast Metaltech
- Paul MacDowell
- National Security Technology, LLC
- Northwest Career & Technical Academy
- Rich, Wightman & Company
- University of Nevada, Las Vegas, College of Engineering
- West Career and Technical Academy
- Kim Womack

### **New Jersey**

BAE Systems  
PSEG Foundation

### **New York – Hudson Valley**

The Albany Academies  
General Electric Company (GE)  
Kennedy Catholic High School  
Pace University Athletics Department  
Seidenberg School of Computer Science and Information Systems at Pace University  
St. John Fisher College  
SUNY Polytechnic Institute  
Sylvan Learning  
Xerox Foundation  
Yonkers Riverside High School

### **New York - New York City**

AB  
Bloomberg L.P.  
Con Edison  
Goldman Sachs Group, Inc.  
Google.org  
News Corp  
Siegel Family Endowment

### **New York - Potsdam**

Adirondack Energy  
BAE Systems  
Clarkson University  
National Grid  
New York Power Authority  
Northern Machining  
PPC: A Belden Brand  
St. Lawrence-Lewis BOCES  
Time Warner Cable Company: Connect a Million Minds  
U.S. Air Force

### **North Carolina**

TE Foundation

Shell Foundation

### **North Dakota**

AE2S Engineering  
Bartlett and Engineering  
Bismarck Bombshellz Roller Derby Team  
Bismarck Public Schools Career Academy  
Bobcat/Doosan  
KLJ Engineering  
Missouri River Education Cooperative Succeed 2020 Grant  
ND Department of Transportation Engineers  
NISC  
North Dakota Career and Technology Education Department  
North Dakota State Engineering Department

### **Ohio**

Cincinnati Bell  
GE Aviation  
Great Oaks Institute of Technology and Career Development  
iSPACE, Inc.

Procter & Gamble  
Toyota Motor Engineering & Manufacturing North America

Woodward Trust

### **Oklahoma**

National Aeronautics and Space Administration (NASA)  
Southwestern Oklahoma State University  
Southwestern Oklahoma State University Foundation  
Weatherford Oklahoma City Council (Hotel Motel Commission)

### **Pennsylvania**

California University of Pennsylvania, California and Canonsburg  
Central High School  
CMU National Robotics Engineering Center  
Dallastown Intermediate School  
Emmaus High School  
**FIRST** Robotics Competition:  
Team 341 “Miss Daisy”  
Team 225 “TechFire”  
Freire Charter High School  
Google Community Foundation  
Millersville University  
Montgomery County Community College  
Mt. St. Joseph Academy  
Oxford Area High School  
Pennsylvania State University – York  
Peters Township Middle School  
Shady Side Academy  
Temple University  
University of Scranton  
Wissahickon High School  
Wissahickon Middle School

### **Rhode Island**

New England Institute of Technology

Providence Engineering Society

### **Texas – Alamo**

Akimeka  
Alamo Colleges - Northwest Vista College  
CPS Energy  
Lockheed Martin Corporation  
Rackspace Hosting

### **Texas – Arlington**

SIM-DFW (Society for Information Management – DFW)  
Rockwell Collins, Inc.  
University of Texas at Arlington College of Engineering

### **Texas – Houston**

Hamshire Fannet ISD  
NASA Johnson Space Center  
Northland Christian School  
San Jacinto College  
Texas Workforce Commission

### **Texas – Lubbock**

Abell-Hangar Foundation  
Anonymous Donor  
ASME - Petroleum Division  
Frenship High School

Texas Tech University  
Edward E. Whitacre Jr.  
College of Engineering

Texas Tech University Equity & Community Engagement Division of Institutional Diversity

Texas Tech University Office of the Provost

### **Utah**

Carl D. Perkins Grants  
Hill Air Force Base STEM  
STEM Action Center

Weber State University College of Engineering, Applied Science & Technology

### **Vermont**

University of Vermont

### **Virginia**

Battlefield High School  
Bechtel Group Foundation  
Best Buy Foundation  
Boston Scientific Corporation  
Capital One Foundation  
CapTech  
CNBMD  
Consol Energy  
Dominion  
GEICO

General Dynamics Advanced Information Systems

Genworth Foundation

James Monroe High School

Lindner Foundation

Lockheed Martin Undersea Systems

Micron Foundation

Norfolk State University

Northrop Grumman Corporation

Orange County High School

PTC, Inc.

Rockwell Collins, Inc.

St. Christopher’s School

Southwest Virginia Community College

STARS

T-Cup

Terra Tech Engineering Services

Traditional Screenprinting

Two-Way Radio

U.S. STEM Foundation

University of Virginia School of Engineering

VCU School of Engineering

### **Wisconsin**

Rockwell Automation, Inc.

University of Wisconsin – Milwaukee College of Engineering & Applied Science

### **Wyoming**

Casper College  
Central Wyoming BOCES  
Greiner  
Natrona County School District  
NCSD #1  
Nobe, Inc. Screenprinting & Embroidery  
Pepsi

*A list of FIRST Tech Challenge Team Sponsors is available online at [www.firstinspires.org/robotics/ftc/team-sponsors](http://www.firstinspires.org/robotics/ftc/team-sponsors)*



## **2015 FIRST ROBOTICS COMPETITION SPONSORS**

### *Kickoff Sponsors*



### *Suppliers*

#### **Crown Suppliers**

3D Systems  
3M Company  
AndyMark, Inc.  
Bimba Manufacturing Company  
BURNDY LLC  
The Coca-Cola Company  
Cross the Road Electronics, LLC  
DS SolidWorks  
ebm-papst Inc.  
FedEx Corporation  
Gates Corporation  
igus, Inc.  
Innovation First International  
Microsoft Corporation  
NI  
NVIDIA Corporation  
PTC, Inc.  
Rockwell Automation, Inc.

#### **Diamond Suppliers**

Analog Devices, Inc.  
Autodesk, Inc.  
Bishop-Wisecarver Corporation  
EnerSys  
Festo Corporation  
GitHub  
Grainger  
Texas Instruments  
Xilinx

#### **Gold Suppliers**

AutomationDirect.com  
BaneBots, LLC  
Denso/ASMO North Carolina  
Digi-Key Corporation  
Fluke Corporation  
Havabana Productions

IMI Precision Engineering  
Inventables  
MaxBotix Inc.  
Parker Hannifin Corporation, Fluid System Connectors Division  
Philips Color Kinetics  
Ruland Manufacturing Co., Inc.  
Tableau Software  
TTI Inc.  
Vulcan Spring and Mfg Co.  
WAGO Corporation  
Worcester Polytechnic Institute

#### **Silver Suppliers**

16 Hertz LLC  
Altium Inc.  
Anderson Power Products®  
CLIPPARD INSTRUMENT LAB., INC.  
CTL  
Eaton’s Bussman Business  
Electronic Components Industry Association (ECIA)  
Freelin-Wade Co.  
Haydon Kerk Motion Solutions  
Intelitek  
Kent Elastomer Products, Inc.  
Kepware Technologies  
Next Gen Robots  
Novelis  
REV Robotics  
Sapa Extrusions North America

#### **Bronze Suppliers**

Assmann  
Batteries Plus Bulbs  
Bayer MaterialScience LLC  
BOSCH  
Bourns  
Coilcraft, Inc.  
Comcast NBCUniversal  
CUI Inc.  
Cypress  
Delphi Automotive PLC  
Diamond Technologies  
Dove Electronic Components, Inc.  
Honeywell International Inc.  
HPE Automation  
Law Logistics  
Littelfuse, Inc.  
Maxim Integrated  
Mouser Electronics, Inc.  
NASON  
NKK Switches  
NXP Semiconductors  
Orbis Corporation  
Pelham Plastics  
RoboRealm, LLC  
Sparkfun Electronics  
Staples  
Vishay Intertechnology, Inc.

WestCoast Products

### *Top Team Sponsors*

*(20 or more teams in 2015)*

*Sponsors in this section are listed in descending order starting with the Sponsor of the highest number of teams.*

The Boeing Company  
National Aeronautics and Space Administration (NASA)  
National Defense Education Program (NDEP)  
BAE Systems  
United Technologies Corporation (UTC)  
PTC, Inc.  
Qualcomm Incorporated  
General Motors Company  
Brin Wojcicki Foundation  
Rockwell Automation, Inc.  
Society of Women Engineers (SWE)  
Boston Scientific Corporation/Argosy Foundation  
Booz Allen Hamilton, Inc.  
Leidos, Inc.  
Comcast NBCUniversal  
Caterpillar Foundation  
Bechtel Group Foundation  
Bezos Family Foundation  
TE Connectivity  
Abbott Fund  
GE Healthcare  
Picatinny Arsenal  
Motorola Solutions Foundation  
BOSCH  
Google.org  
GE Energy  
Friends of Hawaii Robotics  
John Deere  
Medtronic  
Teradata Corporation  
NRG Energy, Inc.  
Rockwell Collins, Inc.  
Walt Disney Company  
Amgen Foundation, Inc.  
DC Public Schools  
The Dow Chemical Company  
Heinz Endowment  
Renasas  
St. Jude Medical Foundation  
News Corp  
Novelis  
Motorola Mobility Foundation  
SAIC

#### *Rookie Team Grantors*

Anonymous  
Argosy Foundation  
Bechtel Group Foundation  
Ursula Burns ■ & Lloyd Bean  
DEKA Foundation

FedEx Corporation  
Walter Havenstein ■  
Microsoft Corporation  
Robert ■ & Lynn Tuttle  
United Technologies Corporation (UTC)  
Josh ▲ & Judy Weston

### *Event Sponsors*

**Alamo Regional Sponsored By Rackspace Hosting**

AKIMEKA  
Booz Allen Hamilton, Inc.  
CPS Energy  
*FIRST* in Texas  
Graebel Van Lines  
Greater Texas Foundation  
Hallmark University  
NI  
Prism Technologies Group  
Rackspace Hosting  
SASTEMIC  
Tesoro Corporation Toyota Motor Manufacturing Texas  
University of Texas San Antonio  
U.S. Air Force  
U.S. Navy  
Whataburger

### **Arizona East Regional**

Avnet  
Craig and Barbara Barrett Foundation  
CUSD (Chandler Unified School District)  
Microchip Employees United Way  
Microchip Technology, Inc.  
ON Semiconductor  
Sanghi Family Foundation  
Science Foundation Arizona  
U.S. Army  
Wells Fargo & Company  
Wishes in Stitches Embroidery

### **Arizona West Regional**

Grand Canyon University  
Microchip Employees United Way  
Microchip Technology, Inc.  
Sanghi Family Foundation  
Science Foundation Arizona  
U.S. Army

### **Arkansas Regional**

Arkansas *FIRST* Incorporated  
Arkansas Space Grant Consortium  
Arkansas State Fairgrounds  
Baxter International, Inc.  
Bylites  
The Coca-Cola Company  
Geisler Family Trust  
Harding Center for Distance Education in Bible and Ministry  
Little Rock Convention and Visitors Bureau  
Novak Technical Services

RCAL Products, Inc.  
U.S. Army  
The Venture Center  
**Australia Regional**  
AarNet  
AndyMark, Inc.  
Autodesk, Inc.  
BAE Systems  
CSC Charitable Foundation  
Ford Motor Company  
Google  
LEGO® Education  
Macquarie ICT Innovations Centre  
Macquarie University  
Manton Sea-Air  
NI  
News Corp  
Optus  
Rockwell Automation, Inc.  
**Bayou Regional**  
Dr. & Mrs. Nick Altiero  
Family and Friends of James B. Bassich  
CenturyLink  
The Dow Chemical Company  
Energy  
Anne & Wendell Gauthier Family Foundation  
The Bruce J. Heim Foundation  
Jefferson Parish Convention and Visitors Bureau  
Kirkendoll Management, LLC  
Leidos, Inc.  
Lockheed Martin Corporation  
Louisiana State Bar Association  
NASA Stennis Space Center  
National Defense Education Program (NDEP)  
U.S. Navy  
**Buckeye Regional**  
Cleveland Clinic Foundation  
Cleveland Community College Foundation  
Cleveland Indians  
Cleveland Plain Dealer  
Cleveland State University  
Cleveland State University Washkewicz College of Engineering  
Delphi Foundation  
Embedded Planet  
Gilcrest  
Great Lakes Science Center  
Jacobs Engineering  
MAGNET The Manufacturing Advocacy & Growth Network  
NASA Glenn Research Center  
Nordson Corp.  
OAI  
Ohio Space Grant Consortium  
Paragon TEC  
Parker Hannifin Corporation  
Rockwell Automation, Inc.

RPM  
SGT  
Sierra Lobo  
ZIN Technologies  
**Central Illinois Regional**  
The Boeing Company  
Bradley University  
Caterpillar, Inc.  
Citizens Equity First Credit Union (CEFCU)  
cse software, inc.  
Deuce Development Corporation  
Motorola Solutions Foundation  
PTC, Inc.  
**Central Valley Regional**  
Google.org  
John Bean Technologies Corporation  
Kings View Behavioral Health Systems  
Madera Unified School District  
PG&E Corporation  
David Rich  
Schneider Electric  
**Chesapeake Regional**  
Bechtel Group Foundation  
Booz Allen Hamilton, Inc.  
Capitol Technology University  
Emerson Charitable Trust  
enktesis, LLC  
Leidos, Inc.  
Lockheed Martin Corporation  
Maryland Space Business Roundtable  
NASA Goddard Space Flight Center  
Northrop Grumman Corporation  
STEMaction  
The Sylvan Laureate Foundation  
T. Rowe Price Foundation  
University of Maryland College Park  
U.S. Army ROTC  
**Colorado Regional**  
Arrow Electronics  
The Ball Foundation  
Comcast NBCUniversal  
Denver Museum of Nature & Science  
Gates Corporation  
GivingFirst.org  
InterCall  
Lockheed Martin Corporation  
LunarG  
Nan Desu Kan  
Wade & Katherine Sutton  
Technetronic Solutions, Inc.  
TerumboBCT  
Trace3  
United Launch Alliance (ULA)  
University of Denver, School of Engineering & Computer Science  
U.S. Engineering

**Dallas Regional**  
Abbott Fund  
Anonymous  
Anonymous in honor of Jackson Kerber  
Atmos Energy  
Greg Auclair  
Kelly Banks  
James Beabout  
William Beach Jr.  
Steven Berry Jr.  
Todd Bethel  
Theodore Bills  
Brenda Bledsoe  
Roy Bobo Jr.  
Steven Bose  
Boston Scientific Corporation  
Brent Braden  
Steve Brodie  
Robert Bulmer  
Angela Ceglio  
Cisco Systems, Inc.  
Angella Coil  
Rebecca Davenport  
Jason Davidson  
Michael Dodd  
Peter Dunn  
Jamie Gage  
Thomas Garrett  
Camille Chang Gilmore in memory of Dorothy Fischer  
Goldman Sachs Group, Inc.  
Greater Texas Foundation  
Grace Griffin  
Brett Haaga  
Geri Hansen  
Dustin Harrington  
Richard Hayes  
Trever Houston Hefner  
Scott Heuler  
Jaimee Mae Hickey  
Irving Convention & Visitors Bureau  
Judy Johnson  
Shaun Kane  
Michael Kohler  
Michael Lang  
Janet Larsen  
Mike Lautzenheiser  
Andrew Jackson Lowery  
Annick Matherne  
Donald May Jr. in honor of Carson Buol  
Robert McCarthy  
Amy McCoskey  
Ryan McKeefrey  
Melissa Messenger in memory of Charles Paul Messenger  
Microsoft Corporation Matching Gifts Program♦  
Scott Miller

Mouser Electronics, Inc.  
William Nicholson III  
Edward O'Dwyer III  
Traci Ann Vinopal Phillips  
Robert Philpott Jr.  
Kevin Pieters  
Michele Polk  
Eric Prager  
Jennifer Prentice  
Thaddeus Reardon  
Robert James Richardson  
Hiram Joel Rios  
Patricia Meeks Roberts  
Mark Rosin  
Steven Ross  
Jillian Leigh Rothwell  
Jonathan Rucker in honor of Reid Rucker  
Edward Patrick Rush  
Mark Sanfilippo  
Lisa Schaab  
Paul Schilling  
Servergy  
Christopher Smith  
Julie Soldo  
Todd Stablein  
Kristiane Teeple  
Total Facility Solutions, Inc.  
Philip Venables  
Angela Volk  
James Watkins  
Christie Ann Woodman  
Joshua Wright  
Ryan Zimmer  
**Festival de Robotique FIRST Robotics Competition à Montreal Regional**  
Bank de Montréal (BMO Groupe financier) Future Electronics  
Banque Nationale (BNC) Famille Beaudoin  
Bombardier Produits Récréatifs (BRP) Groupe Canam et Manac  
Cirque du Soleil  
Commission scolaire Beauce-Etchemin  
Commission scolaire de la Pointe de l'Île (CSPI) CAE  
Commission scolaire de la région de Sherbrooke (CSRS) UBS  
Commission scolaire de Montréal (CSDM)  
Commission scolaire de Montréal (CSDM) Plan Sud Ouest  
Commission scolaire Lester B. Pearson (LBPSB) Hautes Études Commerciales (HEC) Montreal Université Laval  
Commission scolaire Marguerite-Bourgeoys (CSMB) Brault & Bouthillier  
Concordia University  
École de Technologie Supérieure (ÉTS)  
Emplois Compétences Polytechnique Montréal CRSNG  
Fondation JA Bombardier Fondation Lucie et André Chagnon Bombardier Inc.

Fondation Jeunesse Vie (CGI) Armtex  
Fondation Québec Jeunes - CJECN - Réunir Réussir (R2) Université de Sherbrooke  
General Electric Company (GE)  
Google.org  
Héroux Devtek  
Hewitt  
Hydro-Québec  
McGill University  
Ville de Montréal  
Ordre des ingénieurs (OIQ) Famille Ménard  
Power Corporation  
Pratt & Whitney Canada (PWC)  
Réseau Réussite Montréal  
Saputo  
Université de Montréal  
UQAM  
UQAR  
Vigilant Global  
WSP Canada  
**Finger Lakes Regional**  
Bausch & Lomb Incorporated  
Corning Incorporated  
County of Monroe Industrial Development Agency  
Custom Courier Solutions  
Mark Enzien  
ESL Charitable Foundation  
Gleason Works  
Hamilton AV  
Harris Corporation, RF Communications Division  
Ronald Iannucci  
Kodak/RAPA  
Novelis  
Ortho-Clinical Diagnostics  
Glen Pearson  
William Pollock  
PTC, Inc.  
Rochester Institute of Technology  
U.S. Army ROTC  
Wacky Buttons  
Xerox Corporation  
Ronald Zarrella  
**Georgia Southern Classic Regional**  
AutomationDirect.com  
The Arthur M. Blank Family Foundation  
Cisco Systems, Inc.  
Discover Perry  
Georgia Institute of Technology  
Georgia Power Co. (A Southern Co.)  
Karen Albrecht Enterprises  
Kennesaw State University  
Kimberly-Clark Corporation  
Lockheed Martin Corporation  
Selby & Richard McRae Foundation  
Mercer University - Engineering  
University of Georgia - Engineering

U.S. Army ROTC  
YKK  
**Greater DC Regional**  
2 Million Minutes  
Accenture  
Bechtel Group Foundation  
Booz Allen Hamilton, Inc.  
DataNet Systems  
District of Columbia Public Schools  
General Dynamics  
Harris Corporation  
Holly Hill Self Storage  
Hughes Network Systems  
INSPR Media LLC - Public Relations  
Leidos, Inc.  
LMCO Undersea Systems  
Lockheed Martin Corporation  
Micron  
National Aeronautics and Space Administration (NASA)  
Northrop Grumman Corporation  
Orbital Sciences Corporation  
Rolls-Royce North America  
SRA International Corporation  
U.S. Army ROTC  
Volgenau School of Engineering at George Mason University  
**Greater Kansas City Regional**  
APWA Kansas City Metro Chapter  
Black & Veatch  
BlueScope Foundation  
Burns & McDonnell  
Cerner  
DST Systems  
Garmin  
General Motors Company  
Google Fiber  
Honeywell International Inc.  
Ewing Marion Kauffman Foundation  
KC STEM Alliance  
KCP & Lok  
Metropolitan Community College  
MRI Global  
Show-Me Controls & Automation  
UMKC  
US Engineering  
VML  
**Greater Pittsburgh Regional**  
California University of Pennsylvania  
Google.org  
The Heinz Endowments  
MadeRightHere  
**Hawai'i Regional sponsored by BAE Systems**  
Ala Moana Hotel  
Alaska Airlines  
Aston  
BAE Systems

Booz Allen Hamilton, Inc.  
City Mill  
FedEx Corporation  
Hawaii Flower Lei  
Hawai'i Self Storage  
iHeart Media  
Karai Crab  
Matson  
McDonald's  
MW Group, Ltd.  
Northrup Grumman Corporation  
Oceanic Time Warner Cable  
SAIC  
Star Advertiser  
University of Hawai'i  
Willows Restaurant  
**Hub City Regional**  
Greater Texas Foundation  
Texas Workforce Commission  
Visit Lubbock  
Xcel Energy  
**Indiana FIRST Sponsors**  
AndyMark, Inc.  
Barnes & Thornburg, LLP  
Fastenal  
Indiana Department of Education  
Rare Bird Inc.  
Rolls-Royce  
TechPoint Foundation for Youth  
**Indiana FIRST Robotics Competition District State Championship**  
3M Company  
Barnes & Thornburg, LLP  
Dow AgroSciences LLC  
The Dow Chemical Company  
Indiana Space Grant Consortium (INSGC)  
Raytheon Company  
Rolls-Royce  
SEP  
Walker Career Center  
Warren Central High School  
**Indianapolis FIRST Robotics District Competition**  
Barnes & Thornburg, LLP  
Metropolitan School District of Lawrence Township  
Rolls-Royce  
**Kokomo FIRST Robotics District Competition**  
Ameriprise Financial  
AndyMark, Inc.  
B&D Mfg.  
BMO Harris  
Bucheri, McCarty & Metz LLP  
CEM  
The Coca-Cola Company  
Community First Bank of Indiana  
Community Foundation of Howard County

Delphi Foundation  
First Farmers Bank & Trust  
Howard County  
Indiana University – Kokomo  
Ivy Tech Community College  
Kokomo School Corporation  
Marco's Pizza  
Purdue College of Technology  
Region 4 Workforce Board  
Rolls-Royce  
Rotary Club of Kokomo  
St. Vincent  
**Purdue FIRST Robotics District Competition**  
Arni's  
Stephen Baranyk  
Cook Medical  
Delphi Foundation  
Indiana Space Grant Consortium (INSGC)  
Novelis  
One Source  
Purdue School of Engineering Education  
Purdue School of Mechanical Engineering  
Purdue University  
Raytheon Company  
Rolls-Royce  
SEP  
**Inland Empire Regional**  
SMaRT Education  
**Israel Regional**  
Ariel Investment Company  
Bank Leumi  
Bialkin Family Foundation  
Stanley & Ann Borowiec  
Bovin Family Foundation  
Christopher & Barbara Brody  
Checkpoint  
The Leon and Toby Cooperman Family Foundation  
Rich Daly  
Ron Deblinger  
James Dimon  
Irwin & Janet Dorros  
The Drexler Family Foundation  
Thomas & Susan Dunn  
Mitzi and Warren Eisenberg Family Foundation  
Ferland Family Foundation, Inc.  
Bernard Flynn  
Phil Friedman  
Stephen & Fredrica Friedman  
Victor & Patricia Ganzi  
John Gerbeth  
Alfred Goldstein  
Jerry & Paula Gottesman  
Richard & Carol Harries  
Isuzu – UTI Israel  
Jewish Federation of Greater Metrowest NJ



L. Robert & Kathleen Kaswell  
Earle Kazis  
Bernard and Carol Kossar Foundation Inc.  
Jerrold Krivitzky  
The Marcus Foundation, Inc.  
Thomas & Paula McInerney  
John Norgride  
Marne Obernauer  
Ofit Capital Advisors LLC  
Ms. Sarah O’Hagan  
Parasol Foundation  
Mary Pedersen & Leslie Quick  
Arnold S. Penner Foundation Inc.  
Leonard Polisar  
PTC, Inc.  
Qualcomm Incorporated  
Peter & Crisler Quick  
Steven & Gail Reinemund  
Stephen & Pilar Robert  
Gerard Roche  
Edward Rust  
The Ryan Family Foundation  
John Schreiber  
Neal Shapiro & Hyunju Chang  
Paul Silberberg  
Paul Silverman  
Stephen & Tina Squeri  
Joseph and Arlene Taub Foundation  
The Technion - Israel Institute of Technology  
The Tel- Aviv Yaffo Academic College  
The City of Tel-Aviv Yaffo  
William & Judith Turner  
Frank Walter III & Marguerite Walter  
The Weiss Foundation  
Josh▲ & Judy Weston  
Mortimer Zuckerman

### Lake Superior Regional

Archer Racing Accessories  
Arrowhead Concrete Works, Inc.  
Barr Engineering  
Canal Park Business Association (CPBA)  
Chris & Jason Dillon  
Cirrus Aircraft  
Duluth Entertainment and Conference Center  
Edgewater Resort & Waterpark  
Essentia Health  
Freestyle  
Genesis  
Grandma’s Adventure Zone  
Grandma’s Restaurants  
Hartel’s/DBJ Disposal  
Isthmus Engineering & Manufacturing Co-op  
The Jamar Company  
Joy Global Inc.  
Kraus-Anderson Construction Co.  
Lamar  
LHB Foundation Fund  
Miner’s/Super One

Minnesota Power Foundation  
MPECU - Minnesota Power Employees Credit Union  
Northern Door & Hardware, Inc.  
Northland Foundation  
Pentair Foundation  
Republic Bank  
St. Luke’s  
Saturn Systems Inc.  
Stay in Duluth  
Target  
Visit Duluth

### Las Vegas Regional

8 News Now  
Albertsons  
CGI Inc.  
Cirque du Soleil  
*FIRST* Nevada  
S. Freid  
City of Las Vegas  
Las Vegas Convention and Visitors Authority  
Lockheed Martin Corporation  
National Security Technology, LLC  
Nevada PE Foundation  
Rich, Wightman & Company  
S&S Philpott  
Solotech  
Tronox

### Lone Star Regional

American Society of Mechanical Engineers (ASME)  
Bechtel Group Foundation  
BP Corporation North America, Inc.  
CenterPoint Energy  
ExxonMobil Corporation  
General Electric Company (GE)  
Greater Texas Foundation  
Jacobs Technology, Inc.  
LINN Energy, LLC  
Lockheed Martin Corporation  
NASA Johnson Space Center  
The Williams Companies, Inc.

### Los Angeles Regional sponsored by The Roddenberry Foundation

Amgen, Inc.  
Bancroft-Clair Foundation  
Boston Scientific Corporation  
Comcast NBCUniversal  
Jet Propulsion Laboratory  
The Kenneth T. and Eileen L. Norris Foundation  
The Gerald Oppenheimer Family Foundation  
The Ralph M. Parsons Foundation  
Stephen & Jill Petty  
Raytheon Company  
The Roddenberry Foundation  
SpaceX  
USC Viterbi School of Engineering  
Walt Disney Company

### Mexico Regional

DeAcero  
Fundación Azteca de Grupo Salinas  
General Motors Company, México  
Mabe  
MET MEX Peñoles  
Promedici, S.A. de C.V.  
Secretaria de Economía  
Secretaria de Educación Pública

### Michigan *FIRST* Sponsors

AndyMark, Inc.  
BOSCH  
Castaing Family Foundation  
Comau  
Consumers Energy  
Deloitte  
Delphi Foundation  
Detroit Hispanic Development Corporation  
S. Freid  
The Dow Chemical Company  
DTE Energy Foundation  
Dura Automotive Systems  
FCA Foundation  
Ford Motor Company  
General Cable  
General Motors Company  
General Motors Foundation  
Gorman’s  
Ideal Group  
Kendall Electric  
Kettering University  
LEX  
State of Michigan  
PTC, Inc.  
The Robot Garage  
TARDEC  
Toyota  
University of Michigan  
Whirlpool Corporation

### Michigan *FIRST* Robotics Competition District State Championship

American Society for Engineering Education (ASEE)  
Automation Federation/ISA  
BOSCH  
Boys & Girls Clubs of America  
Castaing Family Foundation  
Comau  
Consumers Energy  
Delphi Foundation  
Ford  
General Motors Company  
Girl Scouts of the USA  
MIT Alumni Association  
National 4-H Council  
National Center for Women & Information Technology (NCWIT)  
National Parent Teacher Association (PTA)

National Robotics Week  
Society of Cable Telecommunications Engineers (SCTE)  
Society of Hispanic Professional Engineers (SHPE)  
Society of Women Engineers (SWE)  
Toyota  
UL  
Whirlpool  
Yale Science & Engineering Alumni

### Bedford *FIRST* Robotics District Competition

Bedford Public Schools  
Eastman & Smith Ltd.

### Centerline *FIRST* Robotics District Competition

A Dream Limousine and Sedan  
AndyMark, Inc.  
Renaissance Unity  
Toyota

### Escanaba *FIRST* Robotics District Competition

Bays de Noc Visitors Convention and Visitors’ Bureau  
Bink’s Distributing  
The Coca-Cola Company  
Delat Chamber of Commerce  
EMP Powering the Future  
Michigan Works  
NK Electric  
Pacinos Food and Spirits

### Gull Lake *FIRST* Robotics District Competition

Gull Lake Community Schools Foundation  
Gull Lake View Golf Club & Resorts  
Parker Hannifin Corporation

### Great Lakes Bay Region *FIRST* Robotics District Competition

The Dow Chemical Company  
Michigan’s Best Entertainment  
Midland Public Schools  
Mid-Michigan Limousine  
Pepsi  
Valley Electrical Contractors

### Howell *FIRST* Robotics District Competition

Allegra Networks  
Autodesk, Inc.  
Home Depot  
Ford Motor Company

### Kettering University *FIRST* Robotics District Competition

Fiat Chrysler Automobiles  
General Motors Foundation  
Kettering University  
Stat EMS  
Charles Stewart Mott Foundation

### Lansing *FIRST* Robotics District Competition

Dart  
Ingham Intermediate School District  
Jackson National Community Fund  
Livonia *FIRST* Robotics District Competition  
Livonia Public Schools  
Roush Industries  
Schoolcraft College  
TRW

### St. Joseph *FIRST* Robotics District Competition

LECO Delivering the Right Results  
St. Joseph Lions Club  
TPC Technologies, Inc.  
Whirlpool

### Standish *FIRST* Robotics District Competition

The Dow Chemical Company  
Dura Automotive Systems  
Helena Chemical Co.  
Independent Bank  
Magliner

### Traverse City *FIRST* Robotics District Competition

American Waste  
Blarney Castle Oil Company  
Chevron Corporation  
Cone Drive Gearing Solutions  
Culver’s  
Grand Traverse Band of Ottawa & Chippewa Indians  
Jimmy John’s  
MCM Electric Company  
North Flight EMS  
Opti Temp Inc.  
TBA ISD Career Tech Center  
TC Controls, LLC  
Trantek Automation Corporation  
Traverse City Area Public Schools

### West Michigan *FIRST* Robotics District Competition

Atomic Object, LLC  
Bluewater Technologies  
Consumers Energy  
Disher Design & Development  
DTE Energy  
Flexco/Clipper Belt Lacer  
GE Aviation Systems  
Gentex Corporation  
Grand Valley State University  
Haworth Inc.  
J.C. Huizenga  
Kendall Electric  
Lacks Enterprises Inc.  
David & Robin Leclerc

Wendy Ljungren  
Miejer  
NN, Inc.  
Pepsi  
Pioneer Construction  
Roman Manufacturing  
Sebastian Foundation  
TPI –Total Plastics Inc.  
Wolverine Coil Springs Co.

### Waterford *FIRST* Robotics District Competition

Empirical Solutions Corporation  
Waterford School District

### Woodhaven *FIRST* Robotics District Competition

Dadara  
Ford Motor Company

### Mid-Atlantic Robotics *FIRST* Robotics Competition Region Championship

ADP at the request of Josh Weston▲  
Bloomberg L.P.  
Bristol Myers Squibb  
Comcast NBCUniversal  
The Dow Chemical Foundation  
DuPont  
Johnson & Johnson  
Mercury Systems  
NJ Manufacturers  
Novartis Foundation  
Picatinny Arsenal  
Jim ● & Nancy Utaski  
Friends of Jim ● & Nancy Utaski

### Midwest Regional

Baxter International, Inc.  
Google.org  
Illinois Institute of Technology  
Motorola Solutions Foundation  
Navistar  
University of Illinois

### Minnesota 10,000 Lakes Regional

3M Company  
Michele Azar  
Best Buy Co., Inc.  
Boston Scientific Corporation  
Boston Scientific Employee Giving  
Chinese Urban Youth Robotics Alliance  
Li Chunlin  
Freestyle  
Isthmus Engineering & Manufacturing Co-op  
The Medtronic Foundation  
Medtronic, Inc.  
Medtronic Your Cause ♦  
MN State High School League  
Pentair Foundation  
Robotics Alley  
Target  
University of Minnesota Twin Cities

### Minnesota North Star Regional

3M Company  
Michele Azar  
Best Buy Co., Inc.  
Boston Scientific Corporation  
Boston Scientific Employee Giving  
Chinese Urban Youth Robotics Alliance  
Li Chunlin  
Freestyle  
Isthmus Engineering & Manufacturing Co-op  
The Medtronic Foundation  
Medtronic, Inc.  
Medtronic Your Cause ♦  
MN State High School League  
Pentair Foundation  
Robotics Alley  
Target  
University of Minnesota Twin Cities

### New England District Championship

Analog Devices  
BAE Systems  
Boston Scientific Corporation  
Davis Family Foundation  
ebm-papst Inc.  
Eversource  
Fidelity Investments  
General Dynamics EB  
Google.org  
MIT Draper  
National Grid  
PCLB Foundation  
Pitney Bowes  
PTC, Inc.  
Textron  
Travelers  
United Technologies Corporation (UTC)  
U.S. Air Force  
Velcro Industries

### New York City Regional

AB  
Bloomberg L.P.  
Larry & Tami Cohen  
Comcast NBCUniversal  
Consolidated Edison Company of New York, Inc.  
Credit Suisse (USA), Inc.  
CSC Charitable Foundation  
Michael Dubno▲  
Donald J. Duet  
Glenn Gribble  
Goldman Sachs Group, Inc.  
Google.org  
ICE Foundation  
News Corp  
Pershing Square Foundation  
Clyde Rodriguez  
Siegel Family Endowment

Two Sigma Investments, LLC  
Philip Venables  
Paul Walker  
Allen Weinberg  
**New York Tech Valley Regional**  
ASML  
Applied Materials Inc.  
GE  
GLOBALFOUNDRIES  
Golub Foundation  
Kitware Inc.  
KLA Tencor  
Lam Research Foundation Fund at the East Bay Community Foundation  
M+W US, Inc.  
Mattson Technology, Inc.  
National Aeronautics and Space Administration (NASA)  
National Grid  
PDF Solutions, Inc.  
Rensselaer Polytechnic Institute  
SCREEN Semiconductor Solutions  
Time Warner Cable  
Turner Construction Company  
Wonik IPS USA

### North Bay Regional

A&S Towing  
Atlas Copco  
Canadore College  
FedNor  
Hampton Inn  
HOST North Bay & District Hospitality Organizations Strengthening Tourism  
Joy Global Inc.  
Metso Minerals Canada Inc.  
Motion Canada  
Near North District School Board  
Nipissing University  
City of North Bay  
Redpath Mining Contractors and Engineers  
SMS Rents  
twg\* Communications

### North Carolina Regional

Cisco Systems, Inc.  
Credit Suisse (USA), Inc.  
Fuentek  
Gateway University Research Park  
Google.org  
John & Jane Hardin  
IBM Corporation  
Livingston and Haven  
MacCord Mason  
MetLife Foundation  
PPG Foundation  
Qualcomm Incorporated  
Sigma Xi  
TE Connectivity  
Teaching Textbooks Inc.  
Time Warner Cable

United Technologies Corporation (UTC)  
Volvo  
**Northern Lights Regional**  
Archer Racing Accessories  
Arrowhead Concrete Works, Inc.  
Barr Engineering  
Canal Park Business Association (CPBA)  
Chris & Jason Dillon  
Cirrus Aircraft  
Duluth Entertainment and Conference Center  
Edgewater Resort & Waterpark  
Essentia Health  
Freestyle  
Genesis  
Grandma's Adventure Zone  
Grandma's Restaurants  
Hartel's/DBJ Disposal  
Isthmus Engineering & Manufacturing Co-op  
The Jamar Company  
Joy Global Inc.  
Kraus-Anderson Construction Co.  
Lamar  
LHB Foundation Fund  
Miner's/Super One  
Minnesota Power Foundation  
MPECU - Minnesota Power Employees Credit Union  
Northern Door & Hardware, Inc.  
Northland Foundation  
Pentair Foundation  
Republic Bank  
St. Luke's  
Saturn Systems Inc.  
Stay in Duluth  
Target  
Visit Duluth  
**Oklahoma Regional**  
AAON, Inc.  
ABB Inc.  
American Energy Partners  
William & Diana Beaulieu  
Candor PR  
Chesapeake Energy Corporation  
The Chickasaw Nation  
Mickey L. Clagg  
Kenneth & Lisa Davis  
Dell-OKC  
Devon Energy Corporation  
Dunlap Coddling P.C.  
Express Employment Professionals  
Google.org  
Greater Oklahoma City Chamber of Commerce  
Bob Howard  
IDEAS Mfg. Inc.  
Inasmuch Foundation  
Intellectual Property Section-Hall Estill  
IS Technologies DBA Computer System Design

Kerr Foundation, Inc.  
Kirkpatrick Foundation, Inc.  
MSC Industrial Supply Company  
OGE Energy Corporation Foundation, Inc.  
OK Business Roundtable  
OK Department of CareerTech  
Oklahoma Aeronautics Commission  
Oklahoma Center for the Advancement of Science & Technology  
Oklahoma Christian University  
Oklahoma City Convention and Visitors Bureau  
Oklahoma State University  
Presbyterian Health Foundation  
University of Oklahoma  
University of Tulsa College of Engineering and Natural Sciences  
U.S. Air Force  
Ward Family Gift Foundation  
The Williams Foundation  
John Steele Zink Foundation  
**Orlando Regional**  
a.i. Solutions  
Abacus Business Solutions  
Association for Advancing Automation  
Boca Bearing Company  
The Boeing Company  
Brighthouse Networks  
Comcast NBCUniversal  
Craig Technologies  
Electronic Arts, Inc.  
Embraer Aircraft  
Eureka Factory  
Florida High Tech Corridor - UCF  
Florida High Tech Corridor - USF  
Harris  
HDR, Inc.  
Jacobs Technology, Inc.  
Leidos, Inc.  
Lockheed Martin Corporation  
NASA Kennedy Space Center  
The National Center Simulation  
Northrop Grumman Corporation  
RINI Technologies  
Siemens Corporation  
Sparton Electronics  
Stinger Ghaffarian Technologies  
University of Central Florida  
URS  
U.S. Army ROTC  
The Walt Disney Company  
Women in Cable Telecommunications  
**Peachtree Regional**  
ASME - Atlanta Chapter  
AutomationDirect.com  
The Arthur M. Blank Family Foundation  
Cisco Systems, Inc.  
Georgia Institute of Technology

Georgia Power Co. (A Southern Co.)  
Karen Albrecht Enterprises  
Kennesaw State University  
Kimberly-Clark Corporation  
Selby & Richard McRae Foundation  
Mercer University - Engineering  
Novelis  
University of Georgia - Engineering  
U.S. Air Force  
U.S. Army  
U.S. Army ROTC  
Women in Technology  
**Queen City Regional**  
Abbott Fund  
Alexander & Associates  
Eaton Computer Services  
Josh Haldeman & Caroline Alikonis  
P&G Engineering Modeling and Simulation  
P&G Global Engineering  
School Outfitters  
Toyota  
University of Cincinnati  
U.S. Air Force  
Xavier University  
**Sacramento Regional**  
Abbott Fund  
Brin Wojcicki Foundation  
Chevron  
Google.org  
Randall Lam  
University of California, Davis  
**San Diego Regional**  
3Dconnexion  
Leidos, Inc.  
Outerwall  
Richard Pogue  
PTC, Inc.  
Qualcomm Incorporated  
Teradata Corporation ♦  
ViaSat, Inc.  
**SBPLI Long Island Regional**  
accessLinx, Inc.  
BAE Systems  
Brookhaven NSA  
Cablevision  
Estee Lauder Companies  
Farmingdale State University  
Festo Corporation  
Hofstra University  
IEEE - Institute of Electrical and Electronics Engineers  
Ingerman Smith, LLP  
Nassau Educators Federal Credit Union  
North Shore LIJ Health Systems  
Northrop Grumman Corporation  
Patrons of the SBPLI 2014 Annual Golf Outing  
Pepsi

PSEG Long Island  
SBPLI School of Business  
SCC Construction Management  
Schenck  
The Science Academy at Parkshore  
SCOPE Education Services  
Solomon Group  
Stony Brook University  
Town of Brookhaven LDC  
Town of Islip IDA  
WorkLife Resources  
**Silicon Valley Regional**  
Analog Devices, Inc. (ADI)  
Argosy Foundation  
Boston Scientific Corporation  
Brin Wojcicki Foundation  
Google.org  
Randy Lam  
NVIDIA Corporation  
Qualcomm Incorporated  
**Smoky Mountains Regional**  
Alcoa, Inc.  
Bechtel Group Foundation  
Denso Manufacturing Tennessee, Inc.  
Eagle CDI  
Eastman Chemical Company  
Kendall Electric  
Knoxville Chamber  
Knoxville News Sentinel  
Leidos, Inc.  
Pellissippi State Technical Community College  
PTC, Inc.  
Radio Systems Corporation  
Petsafe  
Tennessee Valley Authority (TVA)  
University of Tennessee College of Engineering  
U.S. Army ROTC  
UT-Battelle/Oak Ridge National Laboratory  
Y-12  
**South Florida Regional**  
Jose Bantillo  
Thomas Broad  
Andrew Christie  
Comcast NBCUniversal  
DEKA Foundation  
Florida Power & Light Company♦  
James Keener  
Brian Mangan  
Michael Miller  
Scott Phillips  
Matthew Schouwink  
U.S. Army ROTC  
Maureen Wilt  
**Utah Regional**  
ATK  
IM Flash Technologies  
L3

Micron Foundation  
Miller Family Philanthropy  
Platt Electric Supply  
STEM Action Center  
Victoria Thomas  
Utah Governor's Office of Economic Development  
Utah Tech Workforce Foundation  
Utah Technology Council  
**Ventura Regional**  
Amgen, Inc.  
Gene Haas Foundation  
E.J. Harrison & Sons  
Limoneira  
Ventura College  
**Western Canadian FIRST Robotics Competition Regional**  
ADLC (Alberta Distance Learning Centre)  
Alberta Culture and Tourism  
Alberta Innovation and Advanced Education  
APEGA  
Calgary Board of Education  
The Dow Chemical Company, Canada  
Ernest Manning High School  
ISA  
NSERC CRSNG  
Pratt & Whitney Canada (PWC)  
Schulich School of Engineering  
University of Calgary  
**Windsor Essex Great Lakes Regional**  
Aventec/Dassault Systemes  
Balluff  
CenterLine  
City of Windsor  
CS WIND Canada  
EPI Centre  
Flex-N-Gate  
Greater Essex Electrical  
KPMG  
KUKA  
OCE  
ONE  
Reko  
St. Clair College  
Siemens Corporation  
South Western Ontario Industry Education Council  
University of Windsor  
Valiant  
Vista Solutions Inc.  
WEtech Alliance  
**Wisconsin Regional**  
Abbott Fund  
Caterpillar Global Mining, LLC  
Cooper Power Systems  
Eaton Corporation  
GE Healthcare  
Google.org  
Isthmus Engineering & Manufacturing Co-op

Joy Global Inc.  
Ladish Co. Foundation  
LEM USA Inc.  
Manpower Group Marquette University  
Michael Best & Friedrich LLP  
Mosher Family Foundation  
MSOE  
Oshkosh Corporation  
The Plexus Corporation Charitable Foundation, Inc.  
Rockwell Automation, Inc.  
Thunderbolt Hobby & Art

*A list of FIRST Robotics Competition Team Sponsors is available online at [www.firstinspires.org/robotics/frc/team-sponsors](http://www.firstinspires.org/robotics/frc/team-sponsors)*



**2014-2015 FIRST Progression of Programs Region Sponsors**  
**Washington FIRST Robotics**

AAA Kartak Glass & Closet  
Robert Adams  
Govind Agarwal  
Alaska Airlines  
Joel A. Alferness  
Roxanne Alves  
American Truck Historical Society, NW Chapter  
Stephen & Gayle Amorosi  
Kevin Anderson  
Anonymous  
Chris & Nicole Arian  
Arrow Electronics  
Robert Atkinson  
John Aultman  
Autodesk, Inc.  
Avista Foundation  
Conrad Ball  
Lola Ball  
Kathleen Barnes  
Steve & Leann Barrett  
Dan & Kathleen Beaudoin  
Bechtel Group Foundation  
Andrew Belan  
Jon Belt  
Sue Bennett  
Bernt Lehnn Farms, Inc.  
Bezos Family Foundation  
Subbu Bhat  
Marjorie Blanck  
Jason Blaszkowski  
Brian & Sharon Bloomquist  
Paul W. & Kimberly A. Bodnar  
The Boeing Company

The Boeing Company Employee Funds  
James Boike  
Shannon Boldizar  
Mark & Dawn Bolin  
Bonneville Power Administration  
John Bottenberg  
Michael & Linda Breaux  
Scott & Margaret Bright  
Frank Brisse  
British-American Business Council  
Eric & Jennifer Brooks  
Paul Brown  
Stacy Brown  
Ian & Cynthia Buford  
Steve Burke  
Heidi Burkett  
Terry Byington  
Tyson Cady  
Erwin & LaShanda Caldwell  
Sherry & Marty Calvert  
Miguel de Campos  
A.N. & L.L. Carlson  
Stephen Carlson  
Steven A. & Natalya M. Carlson  
David & Shelly Carmen  
Dave Carroll  
Valerie Carter  
Tang & Teresa Cheam  
Xingguang Chen  
Haichen Cheng  
Cimtech, Inc.  
Connie Clark-Redmond  
Donna Closson-Lehn  
Ken Coburn  
Perkins Coie  
The Columbus Foundation, Battelle  
Comcast NBCUniversal  
The Community Foundation of South Sound  
John Cook  
Cooperative Agricultural Producers, Inc.  
Philip & Karen Cramer  
Crane Foundation, Inc.  
Carol Criner  
Shawn & Gina Davis  
Geoff & Shawna Dean  
Gail DeGiulio  
Pat DeGiulio  
Ayla DeLaat  
Allan J. & Joanne K. Dempsey  
James & Sandra Dempsey  
Mike Denlinger  
Atulkumar Desai  
David Dickison  
Ying Dong  
Alexandra Dorsett  
Michael & Stephanie Drasz  
E Mental Group, LLC  
Vince & Julia Ebey

Joanne Edinberg  
ElectroImpact  
Eric Emery  
Esterline  
F5 Networks  
Joe Fain  
Wilkson Family  
Christopher & Kami Felipe  
Ferguson Family  
Carol Finck  
*FIRST*  
First Tech Credit Union  
Lance & Wendy Flake  
Flir Systems  
Scott & Laura Fortin  
John & Ilea Fowler  
Maureen Frisch  
Charles Frohlich  
Travis & Sasha Gajewski  
James & Rachel Gallagher  
Dale Garraway  
Andrew Gebhart  
Diana Gee  
Berta Gensinger  
Daniel & Corianne Getchell  
David & Melissa Gibson  
Global Tech Plastics, LLC  
Golden Pacific Embossing, Inc.  
Evan & Zoe Goldring  
Google.org  
Douglas Grady  
Regina Grubb  
Zihong Guo  
Michael Gutmann  
K. Diane Haelsig  
Jennifer Hagander-Luanava  
Marcelo Guerra Hahn  
Christian Hansen  
Katie Harris  
Rosemary Harris  
Alison Hawkings  
Kevin Hawkins  
Jerry & Mary Heitt  
Christian Helms  
Rebecca Hill  
Timothy & Margo Hill  
Jansen Hillis  
Bhargavi Hiremagalur  
Lori & Stephen Hittle  
Mark Hofer & Heather Leach  
Todd & Stephanie Hollander  
Robert Harold Hopp  
Michael & Deanne Hoppe  
Andrew Hospador  
James & Sandra Hunt  
Susan Huntington  
Adam Huson  
Rhonda & Clarence Ince

Intel Foundation  
Intellectual Ventures  
Hank Iszley  
Itron Community Investment  
Jeff James  
Peter & Elizabeth Josten  
Jeff Jouper  
Spencer Judge  
Paul & Rebecca Jung  
Peter & Tracey Jungmann  
Kiwanis Club of Oak Harbor  
City of Kent  
Tammara King  
Leif Kornstaedt  
John Kottcamp  
Kroger  
Singh Kulwinder  
Rajeev Kumar  
Lam Research Foundation Fund  
Joshua Lee  
Tony J. & Debra G. Lee  
Seven & Julie Lemery  
Changsheng Li  
Tzuyung Lin  
A.J. & M.L. Loftus  
C.J. Mcanulty Lueck  
Jay & Shaulana Lujar  
Michael Lumia  
Pam Lund  
Diem Ly  
Janis Machala  
Michael Machnicholl  
Alfred MacRae  
Donald Madonna  
James Madonna  
Naveen Manjunath  
Craig & Carrie Mann  
Jared Martinson  
Jared & Kelly Martinson  
Susan & David Martucci  
Mastercam  
Maxim Integrated  
Marcie Maxwell  
Paul & Jean May  
Dave & Erin McCallum  
Brien McCrea  
Keith Meicho  
Trevor & Jennifer Meier  
Mentor Graphics  
Anthony Metoyer  
Microsoft Corporation  
Microsoft Corporation Giving Campaign  
Employee Funds  
Leonard & Sandra Miller  
Heather Mitchell  
Paula Mitchell  
Dan Moberg  
George & Tichi Motoko

Kimberly Motonaga  
Beth Moursund  
Sherry Mowatt  
Genevieve & Hiroshi Nagata  
Namify, LLC  
Robert Neckorcuk  
Eric Nelson  
Paul S. & Shannon Nelson  
Daniel Newby  
Nytec  
Oakfield Development Corporation  
Jeffrey Olbers  
Chelsea Olson  
Nicola Onychuk  
David & Debra Orona  
P&J Machining  
Pacific Metallurgical, LLC  
Neil Palachuk  
Gurdeep Pall  
Andrew Pardoe  
Hee-Joo Park  
Patrick Dunn & Associates, LTD  
David & Rachel Paul  
Pete Pereira  
David W. & Courtney L. Peters  
Phil Pettis  
Phillips Ultrasound Inc.  
Andrew Pilloud  
Jose Pinero  
Todd Pollard  
Qualitel Corporation  
Kyle Quinn  
Steven & Amanda Radak  
William Rall  
Robert & Margo Ralphs  
Mahalakshmi Ramasamy  
Jacob Rapoport  
Ramprabhu Rathnam  
Red Dot Corporation  
Red Lion Corporation  
Red Lion Hotels Corporation  
Kevin Reed  
Dana Riley-Black  
Marcel Rivard  
Donna Rollag  
Craig Rosenberg  
Craig & Vicky Rosencrans  
Dan Rosenstein  
Kevin Ross ▲ & Sue Adams  
Adam Rubens  
Kip J. & Ann Rumens  
Tracy Russett & Jack Ballard  
S&D Kel, LLC  
Sevan Sahakian  
Ekta Schan  
Elizabeth Richards Schwartz  
Schweitzer Engineering Laboratories, Inc.  
Seattle Chocolate Company

Alain Semet  
Sequim PC Users Group  
Steven Shaw  
Noelle & Joseph Sheehy  
Brett Sheil  
Changsong Shen  
Sunitha Shivananjundappa  
Sally Shuler  
Arlo Siemens  
Atul Sikaria  
Kerrie Anne & Ronald K. Simpson  
SLG & Associates, LLC  
Stan & Mary Sorensen  
Michael Sorenson  
SPEEA  
Jared & Debra Spencer  
Joe Stach  
Star Rentals  
Starbucks  
Robert Steele  
Jim Stewart  
Kurt Strauss  
Brian Sullivan  
Symbotic, LLC  
Tableau Foundation Employee  
Engagement Fund  
Curtis Takahashi  
Nicolas Teeuwen  
Brian Thomas  
Harry Thomas  
David Thompson  
Todd Thompson  
Brogan Thomsen  
Gretchen Thomsen  
Elizabeth & Ron Tickman  
Van & Chrislyn Torres  
Cornelia Townsend  
Bach-Tuyet Tran & John P. Anderson  
Tri-Cities Lodge #2755  
TripWire  
Wei Tung  
Brad & Julie Turner  
URS Electronics, Inc.  
Mike Vanderwel  
Mike VanSchoiack  
James & Jennifer Vasileff  
Brigitta Vermesi  
Peter Vierthaler  
Ravender Virk  
Brett & Hali Waldbaum  
Alan Walker  
Hongyi Wang  
George Wu & Li-Ching Wang  
Washington State Legislature  
Timothy Waterhouse  
Brett Webster  
Lisa Weeks  
Stella Weidner

**PARTNERS**

**2014-2015  
FIRST LEGO LEAGUE JR.  
Global Partners**

*The following key organizations and Volunteers in the field organize the FIRST LEGO League Jr. Program in their respective regions.*

**Belgium**  
Tamara Derksen  
Mark Franken  
Stichting Techniekpromotie

**Norway**  
Mariann Johnsen  
FIRST Scandinavia

**Pakistan**  
Rehan Ahmad  
STARfALL Foundation (Science and Technology Awareness and Recognition for All)

**Russia**  
Aleksei Kornilov  
Volnoe Delo Foundation

**South Africa**  
Johannes de Vries  
Erika de Vries  
Tshwane University of Technology

**Spain**  
Montse Bover  
Fundación Scientia

**Sweden**  
Nina Sivertsen  
FIRST Scandinavia

**Turkey**  
Hakan Habip  
Ozlem Mutlu  
Bilim Kahramanlari Dernegi

**United Kingdom**  
Richard Pering  
The Institution of Engineering and Technology (IET)

**United States**  
Alaska  
Rebecca Soza  
Juneau Economic Development Council

**Arizona**  
Shane Bycott  
Arizona State University, College of Technology & Innovation

**California – Central**  
Michael Adam  
Clovis Unified School District

**California – Southern**  
Lynn Crockett  
LEGOLAND®

**Ireland**  
Richard Pering  
The Institution of Engineering and Technology (IET)

**Israel**  
Yaarit Levy  
Keren Muchnik  
Moran Shalev  
FIRST Israel

**Republic of Korea**  
Eric Lee  
FEST Creative Engineering Education Association

**Mexico**  
Barbara Gomez de Navarro  
Explora, Descubre Y Crea, AC

**The Netherlands**  
Tamara Derksen  
Mark Franken  
Stichting Techniekpromotie

**Norway**  
Mariann Johnsen  
FIRST Scandinavia

**Pakistan**  
Rehan Ahmad  
STARfALL Foundation (Science and Technology Awareness and Recognition for All)

**Russia**  
Aleksei Kornilov  
Volnoe Delo Foundation

**South Africa**  
Johannes de Vries  
Erika de Vries  
Tshwane University of Technology

**Spain**  
Montse Bover  
Fundación Scientia

**Sweden**  
Nina Sivertsen  
FIRST Scandinavia

**Turkey**  
Hakan Habip  
Ozlem Mutlu  
Bilim Kahramanlari Dernegi

**United Kingdom**  
Richard Pering  
The Institution of Engineering and Technology (IET)

**United States**  
Alaska  
Rebecca Soza  
Juneau Economic Development Council

**Arizona**  
Shane Bycott  
Arizona State University, College of Technology & Innovation

**California – Central**  
Michael Adam  
Clovis Unified School District

**California – Southern**  
Lynn Crockett  
LEGOLAND®

**Ireland**  
Richard Pering  
The Institution of Engineering and Technology (IET)

**Israel**  
Yaarit Levy  
Keren Muchnik  
Moran Shalev  
FIRST Israel

**Republic of Korea**  
Eric Lee  
FEST Creative Engineering Education Association

**Idaho**  
Timothy Ewers, Ph.D.  
William Boyd  
Extension 4-H, University of Idaho

**Illinois**  
Mary Buchanan  
Thomas Kleinschmidt  
INScITE Illinois

**Indiana**  
Carol Dostal  
College of Engineering, Technology and Computer Science  
Indiana University – Purdue University, Fort Wayne

**Iowa**  
Camille Sloan-Schroeder  
College of Engineering, Iowa State University

**Kansas – Liberal**  
Jim Bert  
Mid America Air Museum

**Kansas – Kansas City**  
Gretchen Neis  
KC STEM Alliance

**Louisiana**  
Carol Cancienne  
Annette Oertling  
BLaST, Inc. (Building Louisiana Science and Technology)

**Maryland**  
Mark Jenkins  
Bill Duncan  
STEMaction, Inc.

**Michigan**  
Cindy Nader  
Gail Alpert  
FIRST in Michigan

**Minnesota**  
Cheryl Moeller  
Mark Schleusner  
High Tech Kids

**Mississippi**  
Eddie Melton  
Robotics Alliance of Mississippi

**Missouri – Kansas City**  
Gretchen Neis  
KC STEM Alliance

**Missouri – St. Louis**  
Kathie Reuter  
LeAnn Ore Heumphreus  
St. Louis Community College – Florissant Valley

**National Society of Black Engineers (NSBE)**  
Katrina Hill

**Nebraska**  
Brandy Wagner  
University of Nebraska – Lincoln 4-H Youth Development

**Nevada – Las Vegas**  
Jean Hoppert  
Kelli Callahan  
FIRST Nevada

**Nevada – Reno**  
Dee Frewert  
FIRST Nevada

**New Jersey**  
Ernest DiCicco, Jr.  
Mount Olive Robotics Education Association

**New Mexico**  
Chris Morgan  
Sandy Trissell  
FIRST LEGO League New Mexico

**New York – Finger Lakes**  
Elayne Stewart  
University of Rochester

**New York – Long Island**  
Rick Ramhap  
SBPLI, Inc.

**New York – Mid-Hudson Valley**  
John Houston  
Dutchess County Community College

**New York – New York City**  
Elizabeth Vilchis  
Pat Daly  
NYC FIRST

**New York – Utica**  
Elizabeth Rossi  
SUNY Institute of Technology

**North Carolina**  
Marie Hoppert  
Cathy Gorton  
NC FIRST Robotics

**Ohio**  
Kelli Dubendorfer  
Educational Outreach  
Wright Patterson Air Force Base

**Oklahoma**  
JJ Francais  
Craig Shreve  
Oklahoma Science and Engineering Foundation (OKSEF)

**Oregon**  
Cathy Swider  
Bruce Schafer  
Oregon Robotics Tournament and Outreach Program

**Pennsylvania – Southeast**  
Peter Randall  
Dan Ueda  
University of Pennsylvania

**Rhode Island**  
Rebekah Gendron  
Rhode Island School of the Future

**South Carolina**  
Mary Graves  
SC FIRST LEGO League and Robotics Education, Inc.

**Texas – Alamo**  
Melody Crabb  
Northwest Vista College

**Texas – Central**  
Noah Bickford  
Bethany Paul  
Skillpoint Alliance

**Texas – North**  
Joe Cestari  
DFW Technology and Education Council

**Texas – South**  
Karen Cohen  
The University of Houston – CORE

**Texas – Southwest**  
Gabby Gandara  
Virgilio Gonzalez  
University of Texas at El Paso

**Utah**  
Carolyn Parker  
Nate Friedman  
Youth Education  
University of Utah

**Virginia/District of Columbia**  
Nick Swayne  
Dustin Skelton  
James Madison University

**Washington**  
Lindy Baker  
Susan Martucci  
Washington *FIRST* Robotics

**West Virginia**  
Todd Ensign  
NASA IV & V Educator Resource Center

**Wisconsin**  
Lisa Bartig  
BadgerBOTS

**Wyoming**  
Cathy Bisiar  
Natrona County School District

**2014-2015  
FIRST LEGO LEAGUE  
Global Partners**

The following key organizations and Volunteers in the field organize the *FIRST LEGO League Program* in their respective regions.

**Argentina**

Martin Bergada  
Educación Tecnológica S.A.

**Australia**

Luan Heimlich  
Macquarie University

**Austria**

Stefanie Hauffe  
Franzi Ronneburger  
HANDS on TECHNOLOGY e.V.

**Belgium**

Tamara Derksen  
Mark Franken  
Stichting Techniekpromotie

**Brazil**

Cristina Elsner de Faria  
Barbara Cambraia Trajano  
SESI – Brazilian Social Services of Industry – National Department

**Bulgaria**

Kostas Vasileiou  
EduACT

**Canada**

**Alberta**  
Walter Kowalchuk  
*FIRST* LEGO League Alberta Youth Robotics Society

**Newfoundland/Labrador**  
Clarence Button  
Mount Pearl

**Nova Scotia**  
Gary Walsh  
Acadia University

**Ontario**  
David Ellis  
*FIRST* LEGO League Ontario

**Quebec**  
Rachid Abiza  
Brault & Bouthillier

**Chile**

Kirstin Engemann  
Fundación SparkTalents

**China**

Eugene Zhang  
Semia Limited

**Colombia**

Mónica Maria Sánchez Colorado  
Fundación Global Arte Ciencia y Tecnología

**Cyprus**

Kostas Vasileiou  
EduACT

**Czech Republic**

Stefanie Hauffe  
Franzi Ronneburger  
HANDS on TECHNOLOGY e.V.

**Denmark**

Per-Arild Konradsen  
Nina Sivertsen  
*FIRST* Scandinavia

**Dominican Republic**

Abraham Dauhajre  
Fundación para el Desarrollo de las Ciencias y Tecnología

**Egypt**

Ayman El Kabbany  
Robotics, Technology and Human Resources Development Association

**Estonia**

Heilo Altin  
MTÜ Robotika

**Faroe Islands**

Per-Arild Konradsen  
Nina Sivertsen  
*FIRST* Scandinavia

**France**

Bernard Thiery  
Erwan Gallee  
Association MEDIO Sciences Environnement

**Germany**

Stefanie Hauffe  
Franzi Ronneburger  
HANDS on TECHNOLOGY e.V.

**Greece**

Kostas Vasileiou  
EduACT

**Haiti**

Odule Augustin  
FEDUDEVH

**Hong Kong**

Eugene Zhang  
Semia Limited  
The Hong Kong Youth Federation

**Hungary**

Stefanie Hauffe  
Franzi Ronneburger  
HANDS on TECHNOLOGY e.V.

**Iceland**

Birgir Urbancic Ásgeirsson  
Gudrun Bachmann  
*FIRST* LEGO League á Íslandi

**India**

Sudhanshu Sharma  
India STEM Foundation

**Indonesia**

Bambang Rusli  
Mikrobot

**Ireland**

Gareth James  
Richard Pering  
The Institution of Engineering and Technology

**Israel**

Alisha MacIntyre  
Yaarit Levy  
*FIRST* Israel

**Italy**

Franco Finotti  
Fondazione Museo Civico di Rovereto

**Japan**

Hideki Kamoshida  
*FIRST* Japan

**Jordan**

Ismail Yasein Hasan  
King Hussein Foundation

**Republic of Korea**

Professor Kyoung-Mihn Do  
Eric Yongwoo Lee  
FEST (Feeling and Enjoying Science & Technology Organization)

**Kuwait**

Ismail Yasein Hasan  
King Hussein Foundation

**Latvia**

Heilo Altin  
MTÜ Robotika

**Lebanon**

Ghazi Mtaweh  
Cedars Cultural School-Education and Technology Center

**Lithuania**

Arturas Gaulia  
Ieva Jonatyte  
Robotikos Akademija

**Malaysia**

KingHui Law  
Sasbadi Sdn Bhd

**Mexico**

Bárbara Gómez de Navarro  
Explora, Descubre Y Crea, AC

**Moldova**

Heilo Altin  
MTÜ Robotika

**Montenegro**

Prof. Srdjan Kadic  
Young Inventors of Montenegro

**The Netherlands**

Tamara Derksen  
Mark Franken  
Stichting Techniekpromotie

**New Zealand**

Jason Kyle  
Kiwi *FIRST*

**Nigeria**

Olajide Ademola Ajayi  
CODERINA

**Norway**

Per-Arild Konradsen  
Nina Sivertsen  
*FIRST* Scandinavia

**Pakistan**

Rehan Ahmad  
Qamar Iqbal  
STARFALL (Science and Technology Awareness and Recognition for All)

**Palestine**

Ismail Yasein Hasan  
King Hussein Foundation

**Peru**

Luis Linares  
Wernher Von Braun IEP SA

**Philippines**

Mylene Abiva  
FELTA Multi-Media, Inc.

**Poland**

Stefanie Hauffe  
Franzi Ronneburger  
HANDS on TECHNOLOGY e.V.

**Portugal**

Noah Revoy  
Evoluir21

**Qatar**

Ismail Yasein Hasan  
King Hussein Foundation

**Russia**

Aleksei Kornilov  
Maxim Petrov  
Volnoe Delo Foundation

**Serbia**

Andrej Bergant  
Natalija Premuzić  
Zavod Super Glavce

**Singapore**

Hozefa Aziz Singapore Wala  
Duck Learning

**Slovakia**

Stefanie Hauffe  
Franzi Ronneburger  
HANDS on TECHNOLOGY e.V.

**Slovenia**

Andrej Bergant  
Natalija Premuzic  
Zavod Super Glavce

**South Africa**

Johannes de Vries  
Tshwane University of Technology

**Spain**

Ricard Huguet  
Fundación Scientia

**Sweden**

Per-Arild Konradsen  
Nina Sivertsen  
*FIRST* Scandinavia

**Switzerland**

Stefanie Hauffe  
Franzi Ronneburger  
HANDS on TECHNOLOGY e.V.

**Taiwan**

Johnson Jan  
K Kingdom Inc.

**Thailand**

Torsak Chantaravisoot  
Gammaco (Thailand) Co. Ltd.

**Turkey**

Fatma Habip  
Davut Habip  
Bilim Kahramanlari Dernegi

**Ukraine**

Oksana Stoyetskaya  
Prolego Ltd.

**United Kingdom**

Gareth James  
Richard Pering  
The Institution of Engineering and Technology

**United States**

*Adventist Robotics League*  
Mel Wade

**Alabama**  
Dana Hobbs  
Alabama *FIRST* LEGO League

**Alaska**  
Rebecca Parks  
Juneau Economic Development Council

**Arizona**  
Jennifer Velez  
Ira A. Fulton Schools of Engineering  
Arizona State University

**Arkansas**  
Amber Williamson  
Science and Technology Group, Inc.

**California – Central**  
Michael Adam  
Clovis Unified School District

**California – Los Angeles**  
Tony Ayad  
Girl Scouts of Greater Los Angeles

**California – Northern**  
Mark Edelman  
Jill Wilker  
Playing @ Learning

**California – Southern**  
Lynn Crockett  
LEGOLAND®

**Colorado**  
Courtney Goeltzenleuchter  
Ross Parrent  
Colorado Robotics, Excelling at Science and Technology Inc.

**Connecticut**  
Mike Gentry  
Central Connecticut State University

**Delaware**  
Eric Cheek  
Delaware State University

**Florida**  
Laura Melnik  
Florida Robotics Education, Inc.

**Georgia**  
Jeff Rosen  
Storm Robinson  
Julie Sonnenberg-Klein  
Georgia Institute of Technology

**Hawai'i**  
Aaron Dangler  
Blaine Kashiwaeda  
Hawaii *FIRST*® LEGO® League

**Idaho**  
Timothy Ewers, Ph.D.  
William Boyd  
Extension 4-H, University of Idaho

**Illinois**  
Tom Kleinschmidt  
Diane Michalczuk  
INSciTE Illinois

**Indiana**  
Carol Dostal  
College of Engineering,  
Technology and Computer Science  
Indiana University –  
Purdue University, Fort Wayne

**Iowa**  
Camille Sloan-Schroeder  
College of Engineering, Iowa State University

**Kansas – Liberal**  
Jim Bert  
Mid America Air Museum

**Kansas City Region**  
Gretchen Neis  
Laura Bauer  
Curators, University of Missouri

**Kansas – Southeast - Greenbush**  
Lisa Blair  
Greenbush, Southeast Kansas Education Service Center

**Kentucky**  
John Farrar  
Northern Kentucky University

**Louisiana**  
Annette Oertling  
Scot Marshall  
BLaST, Inc.  
(Building Louisiana Science and Technology)

**Maine**  
Tom Bickford  
Maine Robotics

**Maryland**  
Anne Spence, Ph.D.  
Jamie Gurganus  
College of Engineering  
& Information Technology  
University of Maryland Baltimore

**Massachusetts**  
Colleen Shaver  
Worcester Polytechnic Institute

**Michigan**  
Pamela Williamson  
*FIRST* in Michigan

**Minnesota**  
Vicky Coaty  
Cheryl Moeller  
High Tech Kids

**Mississippi**  
Eddie Melton  
Robotics Alliance of Mississippi

**Missouri – St. Louis**  
Kathie Reuter  
LeAnn Ore Heumphreus  
St. Louis Community College –  
Florissant Valley

**Montana**  
Allison Banfield  
Montana State University – Bozeman

**The National Society of Black Engineers (NSBE)**  
Katrina Hill

**Nebraska**  
Kate Pittack  
University of Nebraska –  
Lincoln 4-H Youth Development

**Nevada – Las Vegas**  
Jean Hoppert  
*FIRST* Nevada

**Nevada – Reno**  
Dee Frewert  
*FIRST* Nevada

**New Hampshire**  
Kristen Zuege  
Brian Belley  
BAE Systems

**New Jersey**  
Ernest DiCicco, Jr.  
Mount Olive Robotics Education Association

**New Mexico**  
Chris Morgan  
Sandy Trissell  
Girl Scouts of New Mexico Trails

**New York – Finger Lakes**  
Elayne Stewart  
Damian Garcia  
Costas Solomou  
University of Rochester

**New York – Long Island**  
Janet Anderson  
SBPLI, Inc.

**New York – Mid-Hudson Valley**  
Casimer DeCusatis  
Leah Akins  
John Houston  
Hudson Valley *FIRST* LEGO League

**New York – New York City**  
Mark Sharfshteyn  
Peter Xanthus  
NYC *FIRST*

**New York – Potsdam**  
Amanda Hitterman  
Jessica McPherson  
James Carroll  
Clarkson University

**New York – Utica**  
Elizabeth Rossi  
SUNY Institute of Technology

**North Carolina**  
Dr. Kory Bennett  
North Carolina A&T State University

**North Dakota**  
Ashley Miller  
Christina Loh  
Glen Klawon  
University of North Dakota,  
School of Engineering & Mines

**Ohio**  
Brenda Ronnebaum  
Katie Jewel  
The Ohio Educational Outreach Foundation

**Oklahoma**  
Craig Shreve  
Oklahoma Science and Engineering Foundation (OKSEF)

**Oregon**  
Bruce Schafer  
Loridee Wetzel  
Oregon Robotics Tournament and Outreach Program

**Pennsylvania – Northwest**  
Melanie Ford  
Edward Smith  
Penn State Erie, The Behrend College

**Pennsylvania – Southeast**  
Nate Knauss  
Dan Ueda  
University of Pennsylvania

**Pennsylvania – Southwest - Central**  
Allison Felix  
Saint Francis University

**Pennsylvania – Southwest - Pittsburgh**  
Gordon Walton  
BrainSTEM Learning, Inc.

**Puerto Rico**  
Miray Ramy  
Eureka Enrichment and Learning Center, Inc.

**Rhode Island**  
Rebekah Gendron  
Rhode Island School of the Future

**South Carolina**  
Louis Rubbo  
Mary Graves  
SC *FIRST* LEGO League and Robotics Education, Inc.

**South Dakota**  
Amy Engebretson  
Kristie Maher  
EmBe

**Tennessee – East**  
Paula Suchomski  
Kris Craven  
Bradley Weil  
Tennessee Technological University

**Tennessee - West**  
Tom Banning  
Daniel Kohn  
Frank Niedzwiedz  
University of Memphis

**Texas – Alamo**  
Andrew Schuetze  
Alamo College – Northwest Vista College

**Texas – Central**  
Noah Bickford  
Bethany Paul  
Skillpoint Alliance

**Texas – North**  
Kristi Cantu  
Teresa Lenling  
Perot Museum of Nature and Science

**Texas – South**  
Karen Cohen  
The University of Houston – CORE

**Texas – Southwest**  
Gabby Gandara  
Virgilio Gonzalez  
University of Texas at El Paso

**Utah**  
Kathy Hajeb  
Anne Bastien  
Technology Venture Development  
University of Utah

**Virginia/District of Columbia**  
Nick Swayne  
Dustin Skelton  
James Madison University

**Washington**  
Erin McCallum  
Lindy Baker  
Susan Martucci  
Washington FIRST Robotics

**West Virginia**  
Todd Ensign  
NASA IV & V Educator Resource Center

**Wisconsin**  
Lisa Bartig  
Ben Senson  
BadgerBOTS

**Wyoming**  
Shannon Fischer  
Natrona County School District

**Yemen**  
Ismail Yasein Hasan  
King Hussein Foundation

**2014-2015  
FIRST TECH CHALLENGE**  
*The following key organizations and Volunteers in the field organize the FIRST Tech Challenge Program in their respective regions.*

**Affiliate Partners**

**Australia**  
Luan Heimlich  
Michael Heimlich  
Macquarie University

**Canada**  
**Alberta**  
Philippe Manseau

**China**  
Eugene Zhang  
Semia Limited

**Czech Republic**  
Perry Barlien  
International School of Prague

**France**  
Alice Caplier  
Grenoble INP

**India**  
Sudhanshu Sharma  
Techtronics Education

**Republic of Korea**  
Professor Kyoung-Mihn Do  
FEST Creative Engineering Education Association (Feeling and Enjoying Science & Technology Organization)

**Mexico**  
Bárbara Gómez de Navarro  
Explora, Descubre Y Crea, AC

**The Netherlands**  
Lennart de Graaf  
Fontys Hogeschool ICT

**New Zealand**  
Jason Kyle  
Kiwi FIRST

**Russia**  
Maxim Petrov  
Volnoe Delo Foundation

**Saudi Arabia**  
Husam Al Madani  
National Talent Training Center

**South Africa**  
Johannes de Vries  
FSATIE

**Taiwan**  
Johnson Jan  
ESUN Robot Association

**United States**

**Alaska**  
Brian Holst  
Juneau Economic Development Council

**Arizona**  
Christine Sapio  
Cocconino High School

David Thompson  
Northern Arizona University

**Arkansas**  
Jacquelyn Meissner  
Mountain Home High School – Career Academies

**California – Los Angeles**  
Liberty Naud  
SMaRT Education

**California – Northern California**  
Jill Wilker  
Mark Edelman  
Playing @ Learning

**California – San Diego**  
John and Marion Brooks

**Colorado**  
Matthew Collier  
Kathy Collier  
LAUNCH

**Connecticut**  
Evan Barnet

**Delaware**  
Eric Cheek  
Delaware State University

**Florida**  
Hans Wolf  
Tampa Bay Robotics Foundation, Inc.

**Georgia**  
Connie Haynes  
Georgia FIRST

**Hawai'i**  
Aaron Dengler  
Punahou School

**Idaho**  
Tim Ewers  
University of Idaho Extension 4-H

**Illinois**  
Michael Seedman

**Indiana**  
Darrin Wilcoxson  
Crawfordsville High School

**Iowa**  
Rebecca Whitaker  
University of Iowa

**Kentucky**  
Shawn Payne  
Jessica Cecil  
Owensboro Community and Technical College

**Maryland**  
Bill Duncan  
STEMaction, Inc.

**Massachusetts**  
Loretta Bessette  
MIT Lincoln Laboratory

**Michigan High School**  
Betsy Lamb  
Cranbrook Schools

**Michigan Middle School**  
Francois Castaing  
Gail Alpert  
FIRST in Michigan

**Minnesota**  
Cheryl Moeller  
High Tech Kids

**Mississippi**  
John O'Haver  
University of Mississippi

**Missouri**  
Dr. Marcia Pfeiffer  
Ashok Agrawal  
St. Louis Community College

**Montana**  
Ed Huth  
Oracle

**Nebraska**  
Brad Barker  
Nebraska 4-H Youth Development

**Nevada – Las Vegas**  
David Philippi  
Northwest Career and Technical Academy

**Jean Hoppert**  
FIRST Nevada

**New Jersey**  
Joel Bloom  
New Jersey Institute of Technology

**New York City**  
Pat Daly  
NYC FIRST

**New York – Hudson Valley**  
New York – Empire  
Richard Kline  
Pace University

**New York – Potsdam**  
James Carroll  
Clarkson University

**North Carolina**  
Dr. Kory Bennett  
North Carolina A&T State University

**North Dakota**  
Paul Keidel  
Bismarck Career Academy

**Ohio**  
Linda Neenan  
iSPACE, Inc.

**Oklahoma**  
Brad Fitzgerald  
Southwest Oklahoma State University

**Oregon**  
Bruce Schafer  
Cathy Swider  
ORTOP

**Pennsylvania**  
Thomas Zawislak  
Pennsylvania FIRST Robotics

**Rhode Island**  
Erin Flynn  
New England Institute of Technology

**South Carolina**  
William Pedersen  
John Fogarty  
South Carolina Robotics Education Foundation

**Texas – Dallas/Fort Worth**  
Dr. Carter Tiernan  
College of Engineering  
University of Texas at Arlington

**Texas – Lubbock**  
Richard Gale  
Texas Tech University

**Texas – Pasadena/Houston**  
Sharon Sledge  
San Jacinto College

**Texas – San Antonio**  
Andrew Schuetze

**Utah**  
David Ferro  
Weber State University

**Vermont**  
Douglas Dickey  
Kristin Winer  
University of Vermont

**Virginia**  
Scott McKay  
Virginia FIRST

**Washington**  
Eric Stokely  
Washington FIRST Robotics

**West Virginia**  
Peggy Vance  
Logan County Schools

**Wisconsin**  
Michael Krauski  
University of Wisconsin Milwaukee

**Wyoming**  
Shannon Fischer  
Natrona County School District

**Program Managers**

**China**  
Andrew Bannish  
Kevin Li  
Flora Li  
Xiangpeng Zhang  
Semia Limited

**Czech Republic**  
Joe Monks

**India**  
Rajan Malhotra

**Republic of Korea**  
Eric Lee  
FEST Creative Engineering Education Association

**Saudi Arabia**  
Mohammed Alsenwar  
National Talent Training Center

**Taiwan**  
Rene Cheng  
ESUN Robot Association

**United States**

**Alaska**  
Rebecca Soza  
David Patterson

**California – Los Angeles**  
Gigi Johnson  
Brian Bugert Sr.  
Theresa Klemme  
Maggie Scholtz

**Georgia**  
Robert May

**Hawai'i**  
Blake Uramoto  
Jenny Uramoto

**Idaho**  
Will Boyd

**Illinois**  
Dan Green  
Sue Kunzeman  
Jonathan Weiland

**Indiana**  
Lori Hall

**Michigan Middle School**  
Tammy Damrath  
Ken Platteschorre

**Minnesota**  
Vicki Coaty

**Mississippi**  
Mannie Lowe

**Missouri**  
Susie Mathieu  
Tom McGovern  
Diana Howard

**Montana**  
Allison Banfield  
Montana State University

**New Jersey**  
Vince Frascella  
Patricia Frascella

**New York City**  
Norm Sutaria

**New York – Hudson Valley**  
New York – Empire  
Bernice Houle  
Pace University

**Pennsylvania**  
Dave Hackett

**Texas – Dallas/Fort Worth**  
Chris Carter  
Dave Davis  
College of Engineering  
University of Texas at Arlington

**Texas – Lubbock**  
Alan Barhorst  
Dina Barhorst  
Texas Tech University

**Texas – Pasadena/Houston**  
Nelson Carter  
San Jacinto College

**Utah**  
Dana Dellinger

**Vermont**  
Jeff Frolik  
University of Vermont

**Virginia**  
Carol Edelman

**Washington**  
Kevin Ross  
Adrienne Rime

**Wisconsin**  
Julianne Pickering  
University of Wisconsin Milwaukee

**2015  
FIRST ROBOTICS  
COMPETITION**  
*The following organizations partner with FIRST to implement the FIRST Robotics Competition Program in a specified region.*

**Australia**  
Macquarie University

**Canada**  
FIRST Robotics Canada

**Israel**  
FIRST Israel

**Mexico**  
Fundación Azteca

**United States**

**Arizona**  
AZFirst

**Arkansas**  
Arkansas FIRST

**Colorado**  
Colorado FIRST

**Florida**  
Florida FIRST Robotics Education Foundation, Inc. (FFREF)

**Georgia**  
Georgia FIRST Robotics Inc.

**Hawai'i**  
Friends of Hawaii Robotics

**Illinois**  
FIRST Illinois Robotics

**Indiana**  
Indiana FIRST

**Louisiana**  
BLaST, Inc.  
(Building Louisiana Science and Technology)

**Michigan**  
FIRST in Michigan (FiM)

**Mid-Atlantic Region**  
Mid-Atlantic Robotics,  
a NJ Non-Profit Corp. (MAR)

**Missouri – Kansas City**  
University of Missouri – Kansas City (UMKC)

**Missouri – St. Louis**  
Saint Louis Science Center

**Nevada**  
FIRST Nevada

**New England**  
ingenuityNE Inc.

**New York City**  
NYC FIRST

**New York – Long Island**  
School-Business Partnerships of Long Island, Inc. (SBPLI)

**North Carolina**  
NC FIRST Robotics

**Ohio**  
Ohio Aerospace Institute

**South Carolina**  
Palmetto Partners for Science and Technology

**Tennessee**  
TNFIRST, LLC

**Texas**  
FIRST in Texas

**Virginia**  
Virginia FIRST

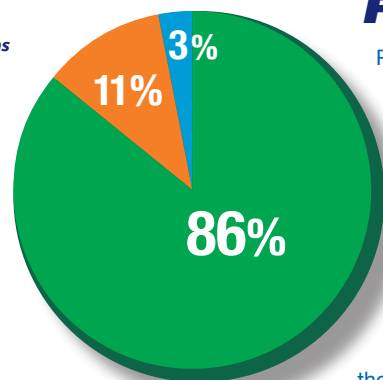
**Washington**  
Washington FIRST Robotics

## FINANCIALS

Program expansion and mission successes continued in fiscal year 2014-2015 with balanced growth in revenues and expenses, including additional investments in our Youth Protection Program, Information Technology, Program Evaluation, and new investment in our Diversity & Inclusion Program. Contributions remained strong, as many individuals, small businesses, corporations – including over 200 of the *Fortune* 500 companies – and foundations maintained or increased their support, while new Sponsors joined *FIRST*. This support provided meaningful experiences to more than 359,000 youth engaged in the *FIRST* Progression of Programs.

As noted in the graph, and in keeping with long-time practices, *FIRST* continues to apply the maximum percentage of funds possible to directly benefit *FIRST* participants. Included within the modest G&A expenses are significant investments in infrastructure enhancements, including those noted above.

*FIRST* achieved its tenth consecutive four-star rating from Charity Navigator, certifying our continued commitment to accountability, transparency, and sound fiscal management. This consecutive rating places *FIRST* in the top 1% of the U.S. charities evaluated by Charity Navigator.



### STATEMENTS OF ACTIVITIES

#### Revenues and other support:

	JUNE 30, 2015	JUNE 30, 2014
Program registration fees	\$ 22,718,237	\$ 20,474,334
Contributions and grants	18,214,680	19,111,341
Other income, net of expenses of \$98,099 in 2015 and \$93,186 in 2014	1,045,962	983,529
Special project (loss) income, net of expenses of \$1,196,117 in 2015 and \$725,116 in 2014	(136,485)	126,385
Net assets released from restrictions	17,449,790	14,739,677

#### Total revenues (losses) and other support

**59,291,914**      **55,435,266**

#### Expenses

<i>FIRST</i> Robotics Competition	39,493,796	36,203,436
<i>FIRST</i> LEGO League and <i>FIRST</i> LEGO League Jr.	6,024,042	6,400,585
<i>FIRST</i> Tech Challenge	3,832,813	3,050,151
<i>FIRST</i> Place	14,881	12,562
Net cost of building space occupied by unrelated not-for-profit organizations	256,625	244,774
General, administrative and supporting services, and fundraising	7,688,961	7,262,637
Operation of <i>FIRST</i> facilities	437,912	418,621
Depreciation	532,434	529,923

#### Total expenses

**58,281,464**      **54,122,689**

#### Operating surplus

1,010,450      1,312,577

### STATEMENTS OF FINANCIAL POSITION

#### Assets:

Cash and cash equivalents*	15,485,707	18,225,785
Short-term investments*	8,250,000	8,500,000
Pledges, receivables, program supply inventory, and other assets	10,804,438	8,102,948
Net property, plant, and equipment	4,524,283	3,961,488

#### Total assets, end of year

**39,064,428**      **38,790,221**

#### Liabilities and net assets:

<b>Total liabilities, end of year</b>	<b>2,376,582</b>	<b>2,276,854</b>
---------------------------------------	------------------	------------------

#### Net assets:

Unrestricted	22,777,156	21,766,706
Temporarily restricted	13,910,690	14,746,661

#### Total net assets, end of year

**36,687,846**      **36,513,367**

#### Total liabilities and net assets, end of year

**\$ 39,064,428**      **\$ 38,790,221**

For each of the two fiscal years summarized above, *FIRST* received unmodified (unqualified) opinions from its independent auditors, BerryDunn.

\*Note: The cash and short-term investments are comprised of both unrestricted funds and donor temporarily restricted funds. The total liquid assets balance available to *FIRST*, for operating purposes, at June 30, 2015, is equivalent to approximately four months of *FIRST* operating expenses.

The financial information presented here is condensed and does not include the value of all donated services and materials. Audited Financial Statements (AFS) are readily available on the website at [www.firstinspires.org](http://www.firstinspires.org) under "About/Annual Report." For details, please refer to the accompanying notes, which are an integral part of the AFS, at the above web address.

## LEADERSHIP

### Board of Directors

**Sheri S. McCoy - Co-Chair**  
Chief Executive Officer & Director  
Avon Products, Inc.

**Robert M. Tuttle - Co-Chair**  
General Partner  
1848 Associates

**John E. Abele - Vice Chair**  
Founding Chairman, Retired  
Boston Scientific Corporation

**Donald E. Bossi - Secretary**  
President  
*FIRST*®

**Dean Kamen - Founder**  
President  
DEKA Research & Development Corporation

**Ursula M. Burns**  
Chairman & Chief Executive Officer  
Xerox Corporation

**Dr. Robin N. Coger**  
Dean, College of Engineering  
North Carolina A&T State University

**David Crane**  
Former President & Chief Executive Officer  
NRG Energy, Inc.

**Walter P. Havenstein**  
Chief Executive Officer, Retired  
Science Applications International Corporation (SAIC)

**Dr. Paul E. Jacobs**  
Executive Chairman of the Board  
Qualcomm Incorporated

**Muhtar Kent**  
Chairman of the Board & Chief Executive Officer  
The Coca-Cola Company

**Dr. Laurie Leshin**  
President  
Worcester Polytechnic Institute

**John H. Lynch**  
Former Governor  
State of New Hampshire

**Scott McKay**  
Executive Vice President & Chief Information Officer  
Genworth Financial

**Dennis A. Muilenburg**  
Chairman, President, & Chief Executive Officer  
The Boeing Company

**Robert K. Ortberg**  
Chairman, President, & Chief Executive Officer  
Rockwell Collins

**Robert L. Parkinson, Jr.**  
Chairman Emeritus  
Baxter International Inc.

**Steve Sanghi**  
Chairman of the Board, President, & Chief Executive Officer  
Microchip Technology, Inc.

**Myron (Mike) E. Ullman, III**  
Executive Chairman  
JCPenney

### Honorary Directors

**Paul A. Allaire**  
*FIRST* Chairman: 1995-2000  
Chairman & Chief Executive Officer, Retired  
Xerox Corporation

**J.T. Battenberg III**  
Chairman & Chief Executive Officer, Retired  
Delphi Corporation

**Francois J. Castaing**  
Executive Vice President, Retired  
Chrysler Corporation

**L. John Doerr III**  
Partner  
Kleiner Perkins Caufield & Byers

**Gary L. Tooker**  
Chairman of the Board, Retired  
Motorola, Inc.

**James R. Utaski**  
*FIRST* Chairman: 2000-2002  
Corporate Mergers & Acquisitions Officer, Retired  
Johnson & Johnson

### Senior Advisors

**Dr. Shirley Ann Jackson**  
President  
Rensselaer Polytechnic Institute

**Kjeld Kirk Kristiansen**  
Chairman of the Board  
LEGO Foundation & KIRKBI A/S

**Gordon Lankton**  
Chairman of the Board, Retired  
Nypro Inc.

**Dr. William P. Murphy, Jr.**  
Founder  
Cordis Corporation

**Dr. Roland Schmitt**  
President Emeritus  
Rensselaer Polytechnic Institute

**The Honorable Jeanne Shaheen**  
United States Senator  
New Hampshire

### Executive Advisory Board

**Dr. Woodie Flowers - Co-Chair & Distinguished Advisor**  
Pappalardo Professor Emeritus of Mechanical Engineering  
Massachusetts Institute of Technology

**Vincent Wilczynski, Ph.D. - Co-Chair**  
Deputy Dean, School of Engineering & Applied Science  
Yale University

**Ray Almgren**  
Chairman  
*FIRST* in Texas

**Gail Alpert**  
President  
*FIRST* in Michigan

**Tom Arseneault**  
Chief Operating Officer  
BAE Systems, Inc.

**Sujeet Chand**  
Chief Technology Officer & Senior Vice President  
Rockwell Automation, Inc.

**Cosema (Connie) Crawford, P.E.**  
Senior Vice President  
The Louis Berger Group, Inc.

**Michael Dubno**  
Head of Global Markets & Research Technology, Retired  
Bank of America Merrill Lynch

**Greg Hale**  
Vice President & Chief Safety Officer  
Walt Disney Parks & Resorts

**Erik Halleus**  
President & Chief Executive Officer  
EuroScandia Enterprises

**James E. Heppelmann**  
President & Chief Executive Officer  
PTC

**Marc Hodosh**  
Co-Creator  
TEDMED

**Kent H. Hughes**  
Public Policy Scholar  
Woodrow Wilson International Center for Scholars

**Kyle Hughes**  
Founder and Teacher  
Clarkston High School Science, Mathematics, and Technology Academy

**Jacob Kragh**  
Senior Vice President, China  
LEGO

**David Lavery**  
Program Executive for Solar System Exploration  
NASA

**Paul Lazarus**  
President  
White Dwarf Productions

**Susie Mathieu**  
Partner  
Spirit Hockey, LLC

**Ceci Neumann**  
Independent Law Practice Professional

**Kevin Ross**  
Founder  
Washington *FIRST* Robotics

**Robert Sobolewski**  
President & Chairman  
ingenuityNE

**Josh S. Weston**  
Honorary Chairman  
Automatic Data Processing, Inc.

### Leadership Team

**Donald E. Bossi**  
President  
*FIRST*

**Steven R. Chism**  
Vice President, Programs  
*FIRST*

**Terry Durkin**  
Vice President, Finance  
*FIRST*

**Mark Giordono**  
Vice President, Development  
*FIRST*

**Mark Greenlaw**  
Vice President, Strategy and Impact  
*FIRST*

**Roseann Stevens**  
Vice President, Field Operations, Volunteer Resources, and Youth Protection  
*FIRST*

*Listing current as of March 1, 2016*

*Championship photography by Adriana M. Groisman, Argenis Apolinario, Dan Donovan, Lara Longo, and Lou Ravetta. Other images courtesy of FIRST teams, Volunteers, and Sponsors.*

## Vision

*“To transform our culture by creating a world where science and technology are celebrated and where young people dream of becoming science and technology leaders.” Dean Kamen, Founder*

## Mission

*To inspire young people to be science and technology leaders, by engaging them in exciting Mentor-based programs that build science, engineering, and technology skills, that inspire innovation, and that foster well-rounded life capabilities including self-confidence, communication, and leadership.*

## Impact

**MORE THAN ROBOTS<sup>SM</sup>** *FIRST participation is proven to encourage students to pursue education and careers in STEM-related fields, inspire them to become leaders and innovators, and enhance their 21<sup>st</sup> century work-life skills.*



[www.firstinspires.org](http://www.firstinspires.org)

▲ 200 Bedford Street ● Manchester, NH 03101 ■ 800.871.8326

FIRST®, the FIRST® logo, FIRST® Robotics Competition, FRC®, FIRST® Tech Challenge, FTC®, Coopertition®, Gracious Professionalism®, Sport for the Mind™, RECYCLE RUSH™, and CASCADE EFFECT™ are trademarks of the United States Foundation for Inspiration and Recognition of Science and Technology (FIRST®). LEGO® and MINDSTORMS® are registered trademarks of the LEGO Group. FIRST® LEGO® League, FLL®, Junior FIRST® LEGO® League, FIRST® LEGO® League Jr., Jr.FLL®, FLL WORLD CLASS™, and Jr.FLL THINK TANK™ are jointly held trademarks of FIRST and the LEGO Group. All other trademarks are the property of their respective owners.  
©2016 FIRST. All rights reserved.



FOR INSPIRATION & RECOGNITION OF SCIENCE & TECHNOLOGY